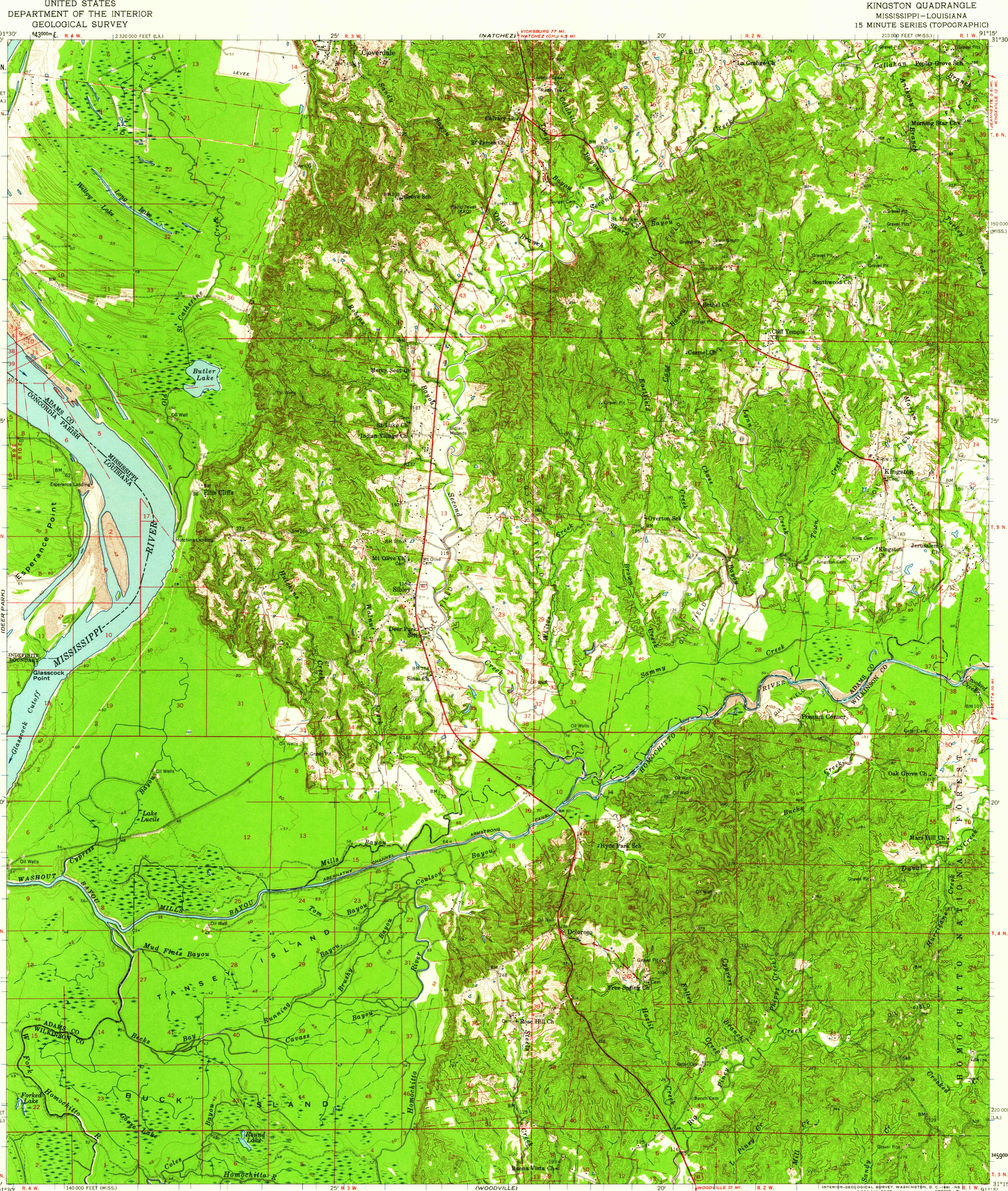
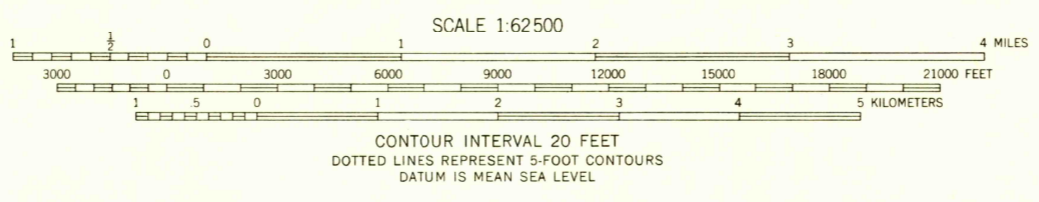
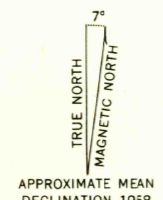


(RED GUM)  
31°30'  
31°30'  
3085000 N.  
300000 FEET (LA.)  
T. 6 N.  
T. 5 N.  
T. 4 N.  
T. 3 N.  
31°15'



KINGSTON QUADRANGLE  
MISSISSIPPI—LOUISIANA  
15 MINUTE SERIES (TOPOGRAPHIC)

Mapped, edited, and published by the Geological Survey  
Control by USGS, USC&GS, and USCE  
Topography from aerial photographs by photogrammetric methods  
and by planetable surveys 1958. Aerial photographs taken 1957  
Polyconic projection. 1927 North American datum  
10,000-foot grids based on Mississippi coordinate system,  
west zone, and Louisiana coordinate system, north zone  
1000-meter Universal Transverse Mercator grid ticks,  
zone 15, shown in blue  
Dashed land lines indicate approximate locations



USGS  
Historical File  
Topographic Division

ROAD CLASSIFICATION

|             |                 |
|-------------|-----------------|
| Heavy-duty  | Light-duty      |
| Medium-duty | Unimproved dirt |

U.S. Route

MISS.

QUADRANGLE LOCATION

THIS MAP COMPLIES WITH NATIONAL MAP ACCURACY STANDARDS  
FOR SALE BY U. S. GEOLOGICAL SURVEY, DENVER 25, COLORADO OR WASHINGTON 25, D. C.  
AND BY THE STATE OF LOUISIANA, DEPARTMENT OF PUBLIC WORKS, BATON ROUGE 4, LOUISIANA  
A FOLDER DESCRIBING TOPOGRAPHIC MAPS AND SYMBOLS IS AVAILABLE ON REQUEST

U.S.G.S.  
FILE COP  
TOPOGRAPHIC DIVISION

KINGSTON, MISS.—LA.  
N3115—W9115/15  
1958

JUN 23 1961  
6125