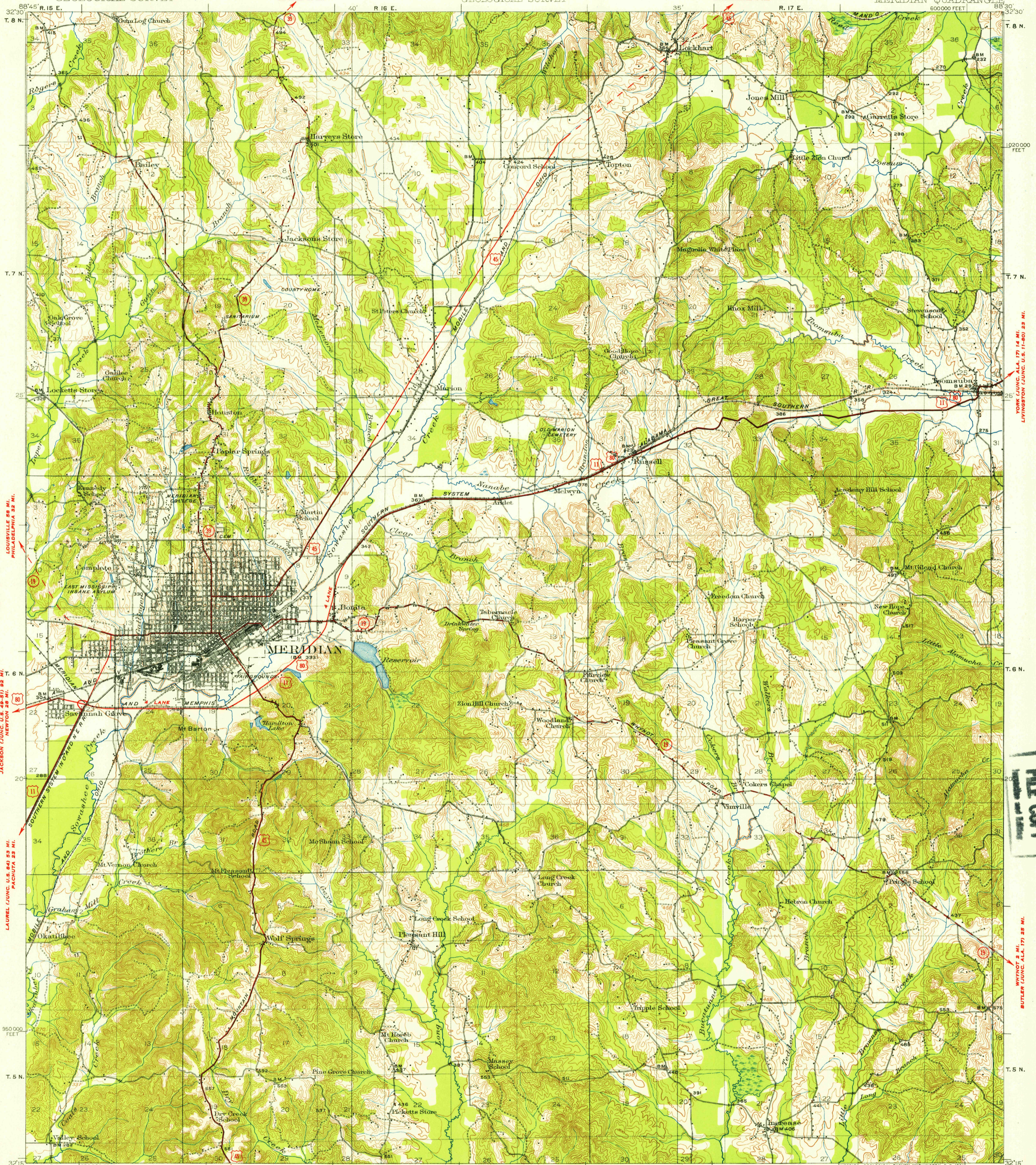


U.S.G.S.
FILE COPY
Inspection and Editing



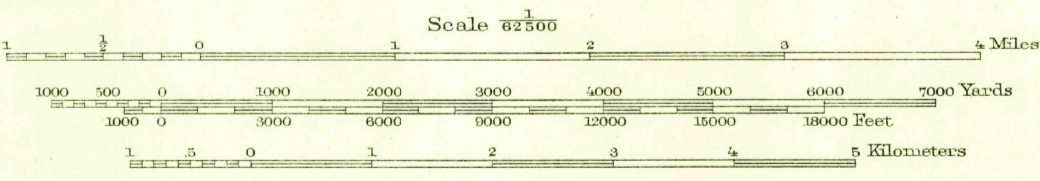
LOUISVILLE 85 MI.
PHILADELPHIA 33 MI.
JACKSON (JUNC. U.S. 65-71) 82 MI.
NEWTON 28 MI.
LAUREL (JUNC. U.S. 84) 83 MI.
PACHUTA 23 MI.

YORK (JUNC. ALA. 17) 14 MI.
LIVINGSTON (JUNC. U.S. 11-80) 23 MI.
WHYNOT 2 MI.
BUTLER (JUNC. ALA. 17) 25 MI.

U.S.G.S.
FILE COPY

C. H. Birdseye, Chief Topographic Engineer.
Frank Sutton, Division Topographic Engineer.
Hersey Munroe, Topographic Engineer in charge.
Topography by B. A. Jenkins, E. V. Perkinson, and W. S. Beames.
Control by U. S. Coast and Geodetic Survey,
Corps of Engineers U. S. Army, H. S. Senseney,
and E. E. Harris.
Surveyed in 1920-21.

APPROXIMATE MEAN
DECLINATION, 1921



Contour interval 20 feet
Datum is mean sea level

FOR SALE BY U. S. GEOLOGICAL SURVEY, WASHINGTON 25, D. C.
A FOLDER DESCRIBING TOPOGRAPHIC MAPS AND SYMBOLS IS AVAILABLE ON REQUEST

USGS
Historical File
Topographic Division

ROAD CLASSIFICATION
Heavy-duty ——— 4 LANE 16 LANE Light-duty ———
Medium-duty ——— 4 LANE 16 LANE Unimproved dirt ———
U. S. Route State Route

Polyconic projection. To place on 1927 North American datum
move projection lines 10 feet north and 35 feet east
10 000 foot grid based on Mississippi (East)
rectangular coordinate system

MERIDIAN, MISS
N3215-W8930/15

1921

MAY 7 1954
1015