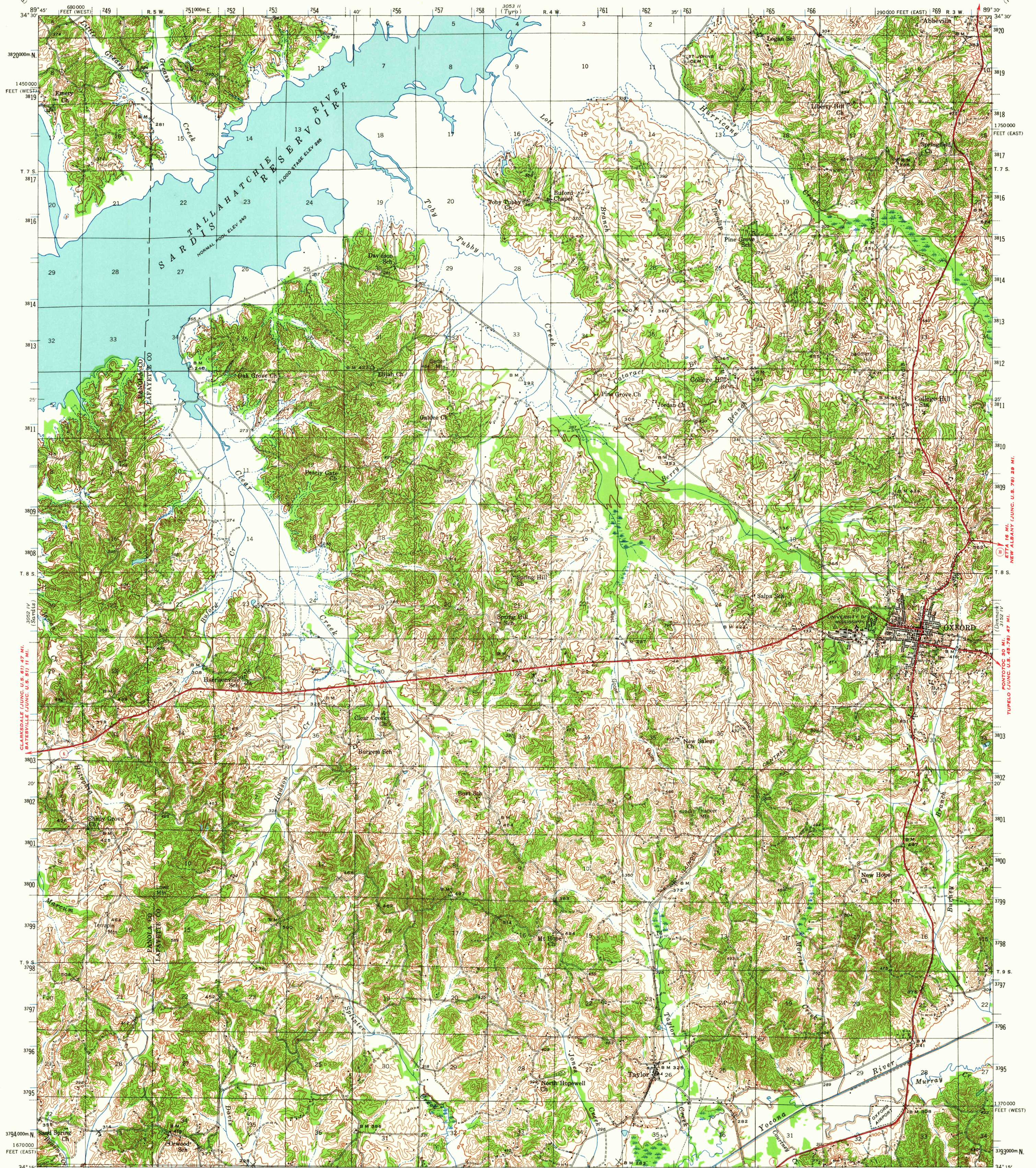


3053 III
(S. Malone)

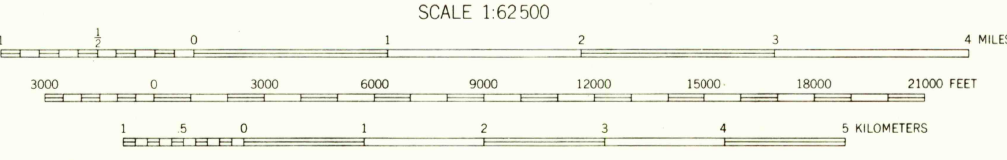
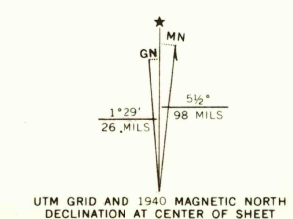
UNITED STATES
DEPARTMENT OF THE INTERIOR
GEOLOGICAL SURVEY

HOLLY SPRINGS (JUNC. U.S. 78) 21 MI.
MISSISSIPPI
OXFORD QUADRANGLE
15-MINUTE SERIES

3053 III
(P. La Comp)



Topography by Corps of Engineers, U. S. Army,
W. C. Thompson, and F. F. Blankenbaker
Surveyed in 1939-1940



Contour interval 20 feet
Datum is mean sea level

ROAD CLASSIFICATION
Heavy-duty 4 LANE, 6 LANE Light-duty
Medium-duty 4 LANE, 6 LANE Unimproved dirt
U. S. Route State Route

U.S.G.S. N 3415-W 8930/15
1940
AMS 3052 I-SERIES V743
USGS Historical File
Topographic Division

FOR SALE BY U. S. GEOLOGICAL SURVEY, WASHINGTON 25 D. C.
A FOLDER DESCRIBING TOPOGRAPHIC MAPS AND SYMBOLS IS AVAILABLE ON REQUEST

4525
DEC 29 1964