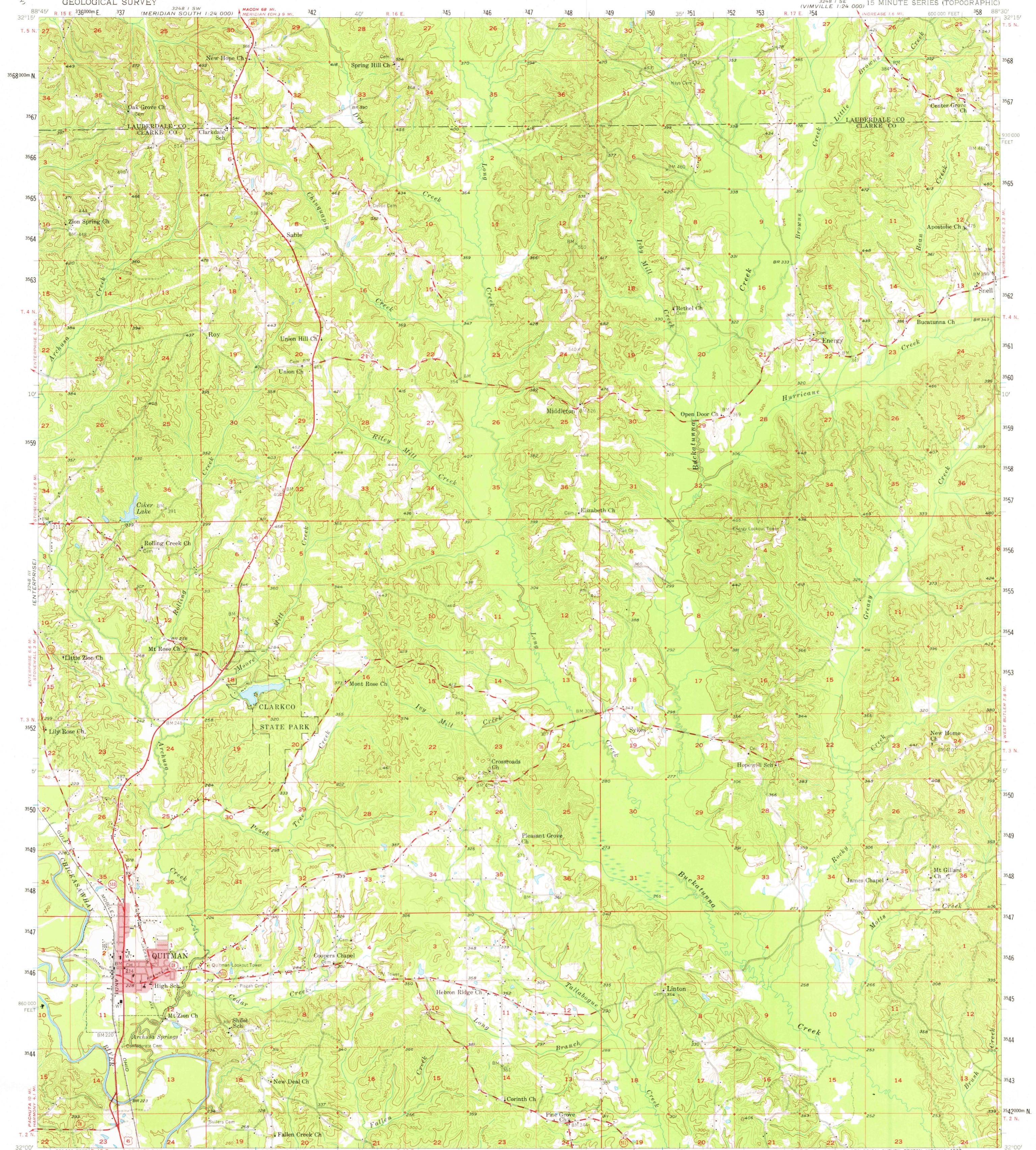
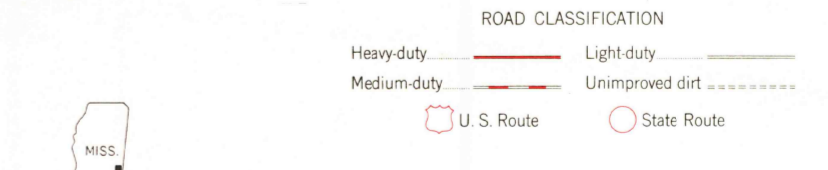
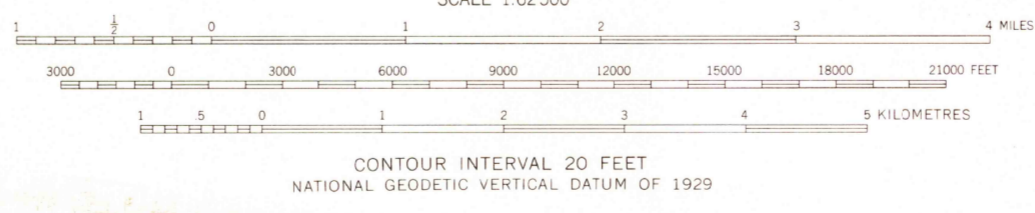
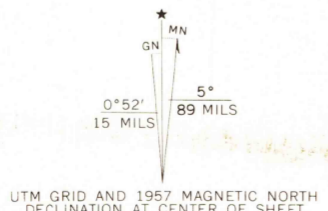


UNITED STATES
DEPARTMENT OF THE INTERIOR
GEOLOGICAL SURVEY

QUITMAN QUADRANGLE
MISSISSIPPI
15 MINUTE SERIES (TOPOGRAPHIC)



Mapped, edited, and published by the Geological Survey
Control by USGS and USC&GS
Topography from aerial photographs by photogrammetric methods
Aerial photographs taken 1954. Field check 1957
Polyconic projection, 1927 North American datum
10,000-foot grid based on Mississippi coordinate system, east zone
1000-metre Universal Transverse Mercator grid ticks,
zone 16, shown in blue
Red tint indicates area in which only
landmark buildings are shown



QUITMAN, MISS.
N 3200 - W 8830 / 15
1957
AMS 3248 II - SERIES V743

DEC 20 1976

USGS
Historical File
Topographic Division