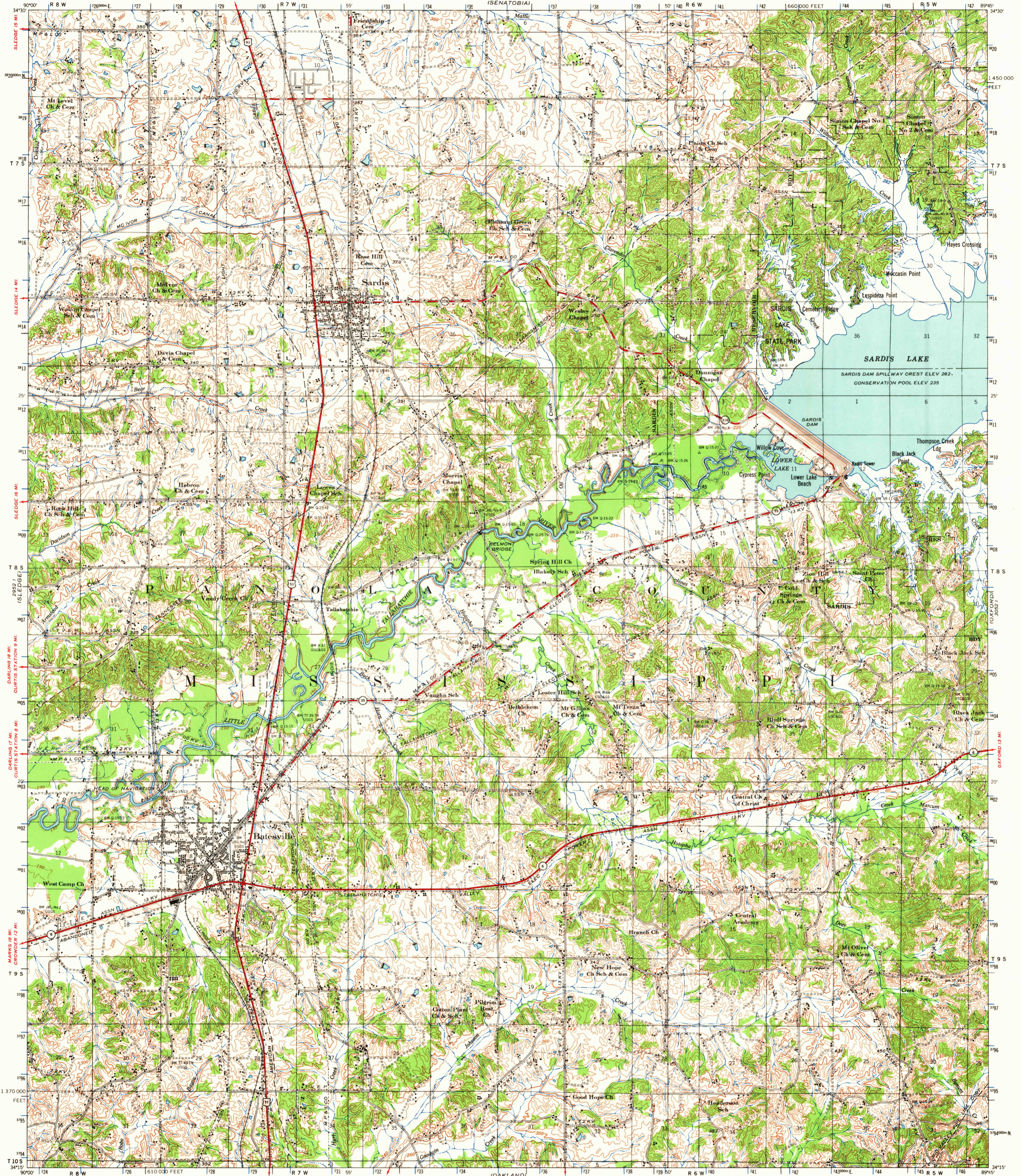


2952 (1)
GREENSBAY

UNITED STATES
DEPARTMENT OF THE INTERIOR
GEOLOGICAL SURVEY

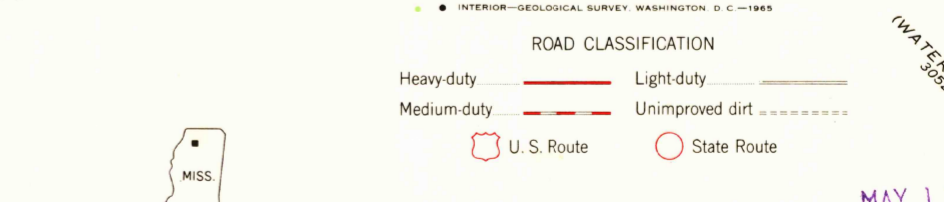
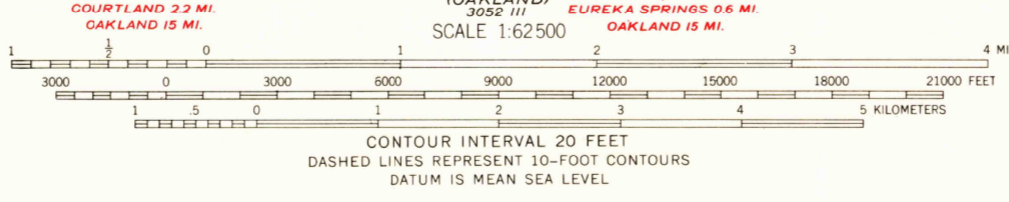
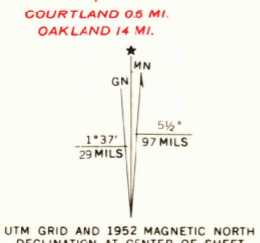
SARDIS QUADRANGLE
MISSISSIPPI
15 MINUTE SERIES (TOPOGRAPHIC)

3053 (1)
17940



2952 (1)
GREENSBAY

Mapped and edited by the Mississippi River Commission
Published by the Geological Survey
Control by USGS, USC&GS, USCE, and MRC
Topography by photogrammetric methods from aerial
photographs taken 1951. Field checked 1952
Polyconic projection. 1927 North American datum
10,000-foot grid based on Mississippi coordinate system, west zone
1000-meter Universal Transverse Mercator grid ticks,
zone 16, shown in blue



THIS MAP COMPLIES WITH NATIONAL MAP ACCURACY STANDARDS
FOR SALE BY U.S. GEOLOGICAL SURVEY WASHINGTON, D. C. 20242,
AND MISSISSIPPI RIVER COMMISSION, VICKSBURG, MISSISSIPPI
A FOLDER DESCRIBING TOPOGRAPHIC MAPS AND SYMBOLS IS AVAILABLE ON REQUEST

SARDIS, MISS.
N3415—W8945/15
1952
AMS 3052 IV—SERIES V743

MAY 17 1965

USGS
Historical File
Topographic Division

2100