

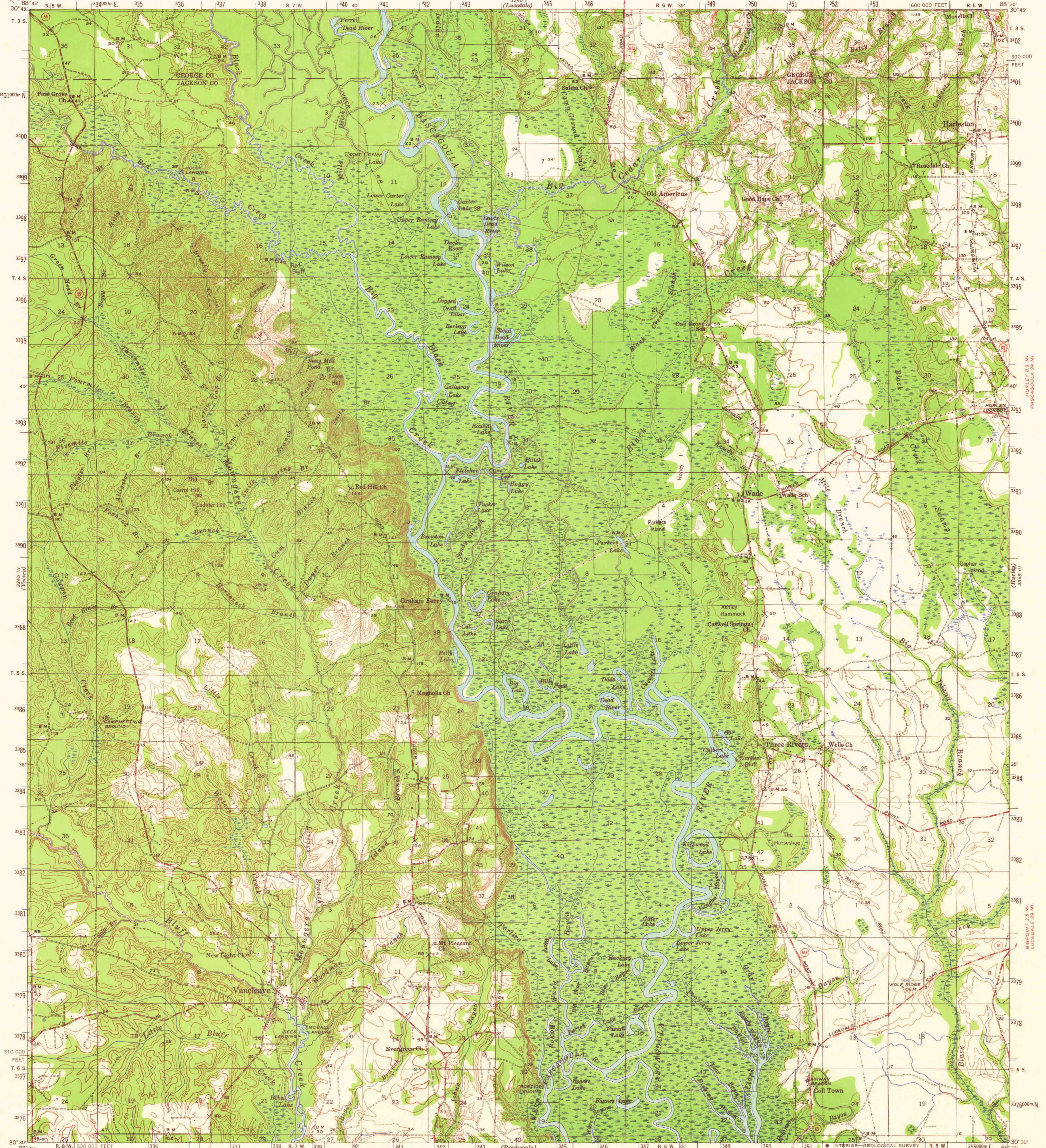
MC LAIN LUNC. U.S. 981 28 MI.  
BENDALE LUNC. MISS. 261 10 MI.

LUCEDALE 15 MI.  
AGRICOLA 4.6 MI.

UNITED STATES  
DEPARTMENT OF THE INTERIOR  
GEOLOGICAL SURVEY

UNITED STATES  
DEPARTMENT OF THE ARMY  
CORPS OF ENGINEERS

MISSISSIPPI  
VANCLEAVE QUADRANGLE  
15-MINUTE SERIES



Topography by J. I. Brubaker, E. M. Thompson,  
T. D. Anderson, Lindsley Arthur, J. H. Drake,  
L. A. Koffman, T. V. Wilder, C. H. Parker,  
David Landen, and C. S. Wells.  
Surveyed in 1940-1941

FONTAINBLEAU 7.5 MI.  
PASCAGOULA 17 MI.

SCALE 1:62,500

0 1 2 3 4 MILES

0 3000 6000 9000 12000 15000 18000 21000 FEET

0 5 10 15 20 25 30 KILOMETERS

CONTOUR INTERVAL 10 FEET  
DATUM IS MEAN SEA LEVEL

ESCATAWPA 4.5 MI.  
PASCAGOULA 10 MI.

Interior-Geological Survey, Washington, D.C. - 1968

Polyconic projection. 1927 North American datum  
10,000-foot grid based on Mississippi (East)  
rectangular coordinate system  
1000-meter Universal Transverse Mercator grid ticks,  
zone 16, shown in blue

USGS  
Medium duty  
Unimproved  
Light duty  
State Route  
TOPOGRAPHIC DIVISION

VANCLEAVE, MISS.  
N 3030-W 8830/15  
1941  
AMS 3245 II-SERIES V785

4345  
JAN 26 196

FOR SALE BY U. S. GEOLOGICAL SURVEY, WASHINGTON, D. C. 20242  
A FOLDER DESCRIBING TOPOGRAPHIC MAPS AND SYMBOLS IS AVAILABLE ON REQUEST