

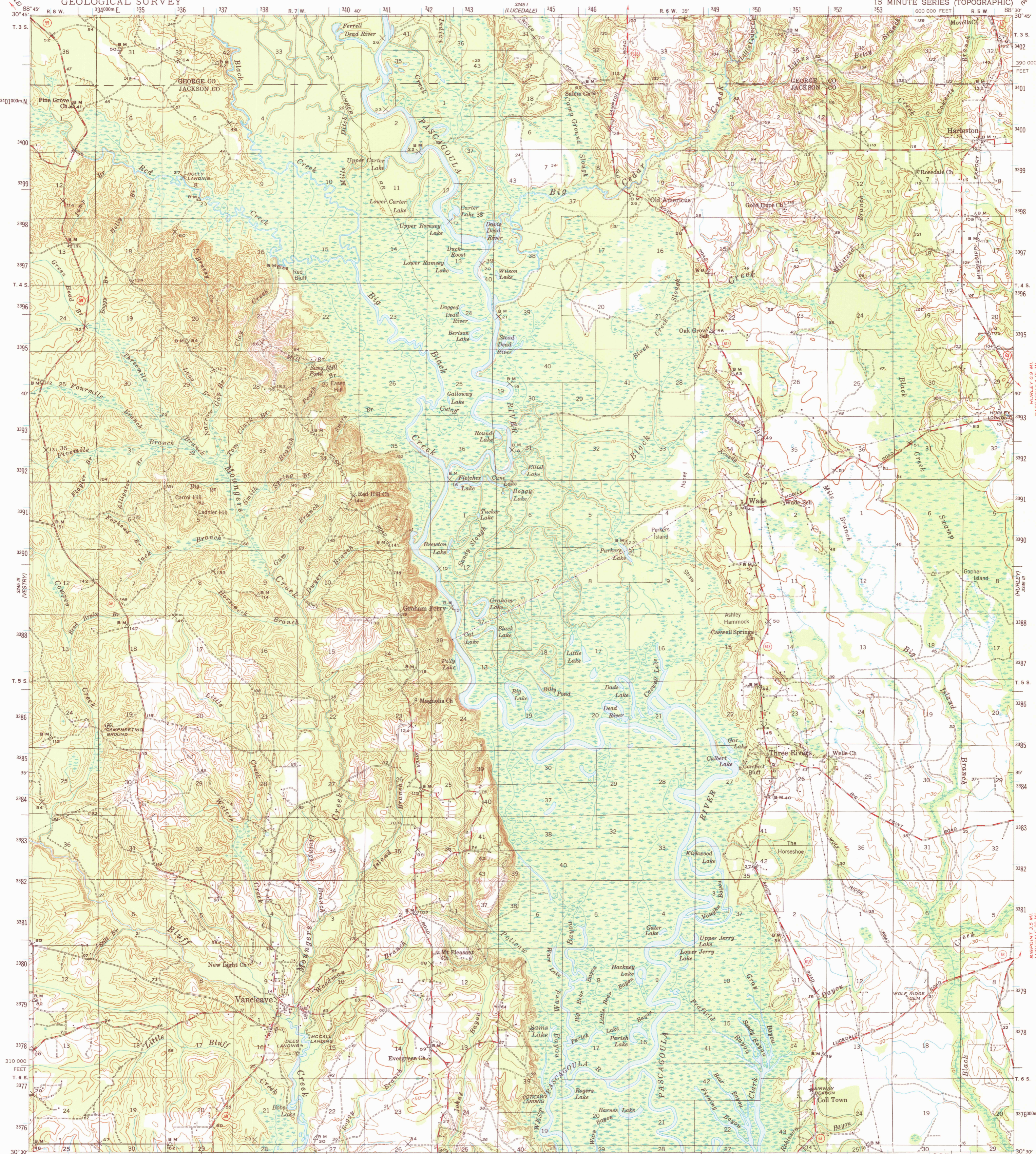
MC LAIN QUANC. U.S. 981 28 MI.
BENNALE QUANC. MISS. 261 19 MI.

UNITED STATES
DEPARTMENT OF THE INTERIOR
GEOLOGICAL SURVEY

VANCLEAVE QUADRANGLE

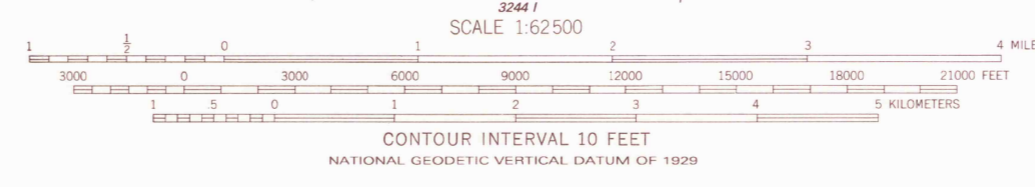
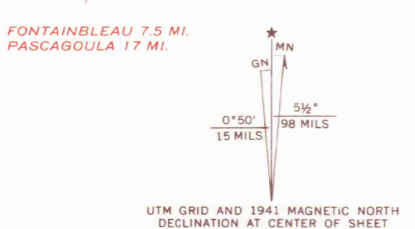
MISSISSIPPI

15 MINUTE SERIES (TOPOGRAPHIC)



Topography by J. I. Brubaker, E. M. Thompson,
T. D. Anderson, Lindsley Arthur, J. H. Drake,
L. A. Koffman, T. V. Wilder, C. H. Parker,
David Landen, and C. S. Wells.
Surveyed in 1940-1941

Polyconic projection. 1927 North American datum
10,000-foot grid based on Mississippi (East)
rectangular coordinate system
1000-meter Universal Transverse Mercator grid ticks,
zone 16, shown in blue
To place on the predicted North American Datum 1983,
move the projection lines 17 meters south and 3 meters east



THIS MAP COMPLIES WITH NATIONAL MAP ACCURACY STANDARDS
FOR SALE BY U.S. GEOLOGICAL SURVEY, RESTON, VIRGINIA 22092
A FOLDER DESCRIBING TOPOGRAPHIC MAPS AND SYMBOLS IS AVAILABLE ON REQUEST

ESCATAWPA 4.5 MI.
PASCAGOULA 10 MI.

Interior-Geological Survey,
Reston, Virginia-1984

This area also covered by 7.5-minute, 1:24,000-scale
maps: Easen Hill 1982, Harleston 1982, Vanclave 1982,
and Three Rivers 1982

VANCLAVE, MISS.
N3030-W8830/15

1941

DMA 3245 11-SERIES V785

RETURN TO:
USGS NMD HISTORICAL MAP ARCHIVES