

U.S.G.S. FILE COPY TOPOGRAPHIC DIVISION

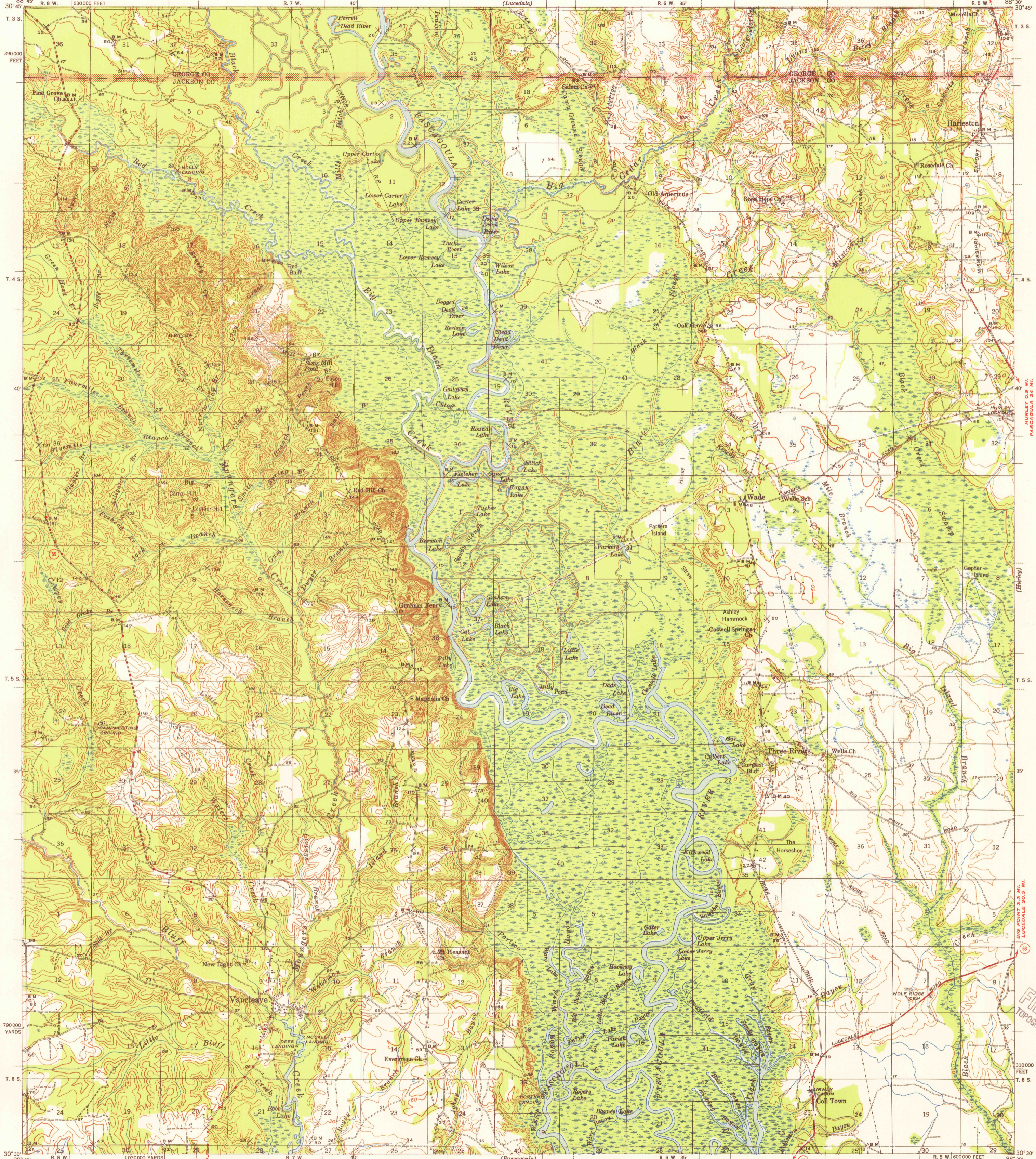
WIGGINS 29 MI. LUCEDALE 19 MI. JUNC. STATE NO. 26 2.2 MI.

LUCEDALE 15.4 MI. AGRICOLA 4.4 MI.

UNITED STATES DEPARTMENT OF THE INTERIOR GEOLOGICAL SURVEY

WAR DEPARTMENT

MISSISSIPPI VANCLEAVE QUADRANGLE 15-MINUTE SERIES



Topography by J. I. Brubaker, E. M. Thompson, T. D. Anderson, Lindsley Arthur, J. H. Drake, L. A. Koffman, T. V. Wilder, C. H. Parker, David Landen, and C. S. Wells. Surveyed in 1940-1941

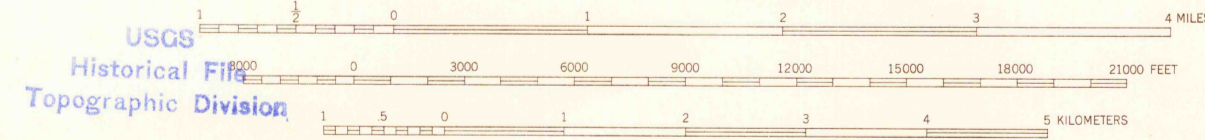
FONTAINEBLEAU (JUNC. U. S. NO. 90) 7.4 MI.

SCALE 1:62,500

ESCATAWPA 4.2 MI. PASCAGOLA 9.8 MI.

Polyconic projection. 1927 North American datum 5000 yard grid based on U. S. zone system, C 10000 foot grid based on Mississippi (East) rectangular coordinate system

APPROXIMATE MEAN DECLINATION, 1941



ROAD CLASSIFICATION 1943  
Dependable hard-surface heavy-duty road  
Secondary hard-surface all-weather road  
Loose-surface, graded  
Unsurfaced, graded dry-weather roads  
Dirt road  
U. S. Route 15  
State Route 28

VANCLEAVE, MISS. Edition of 1943

N3030-W8830/15

Contour interval 10 feet Datum is mean sea level

U.S.G.S. FILE COPY TOPOGRAPHIC DIVISION

APR 25 1955