

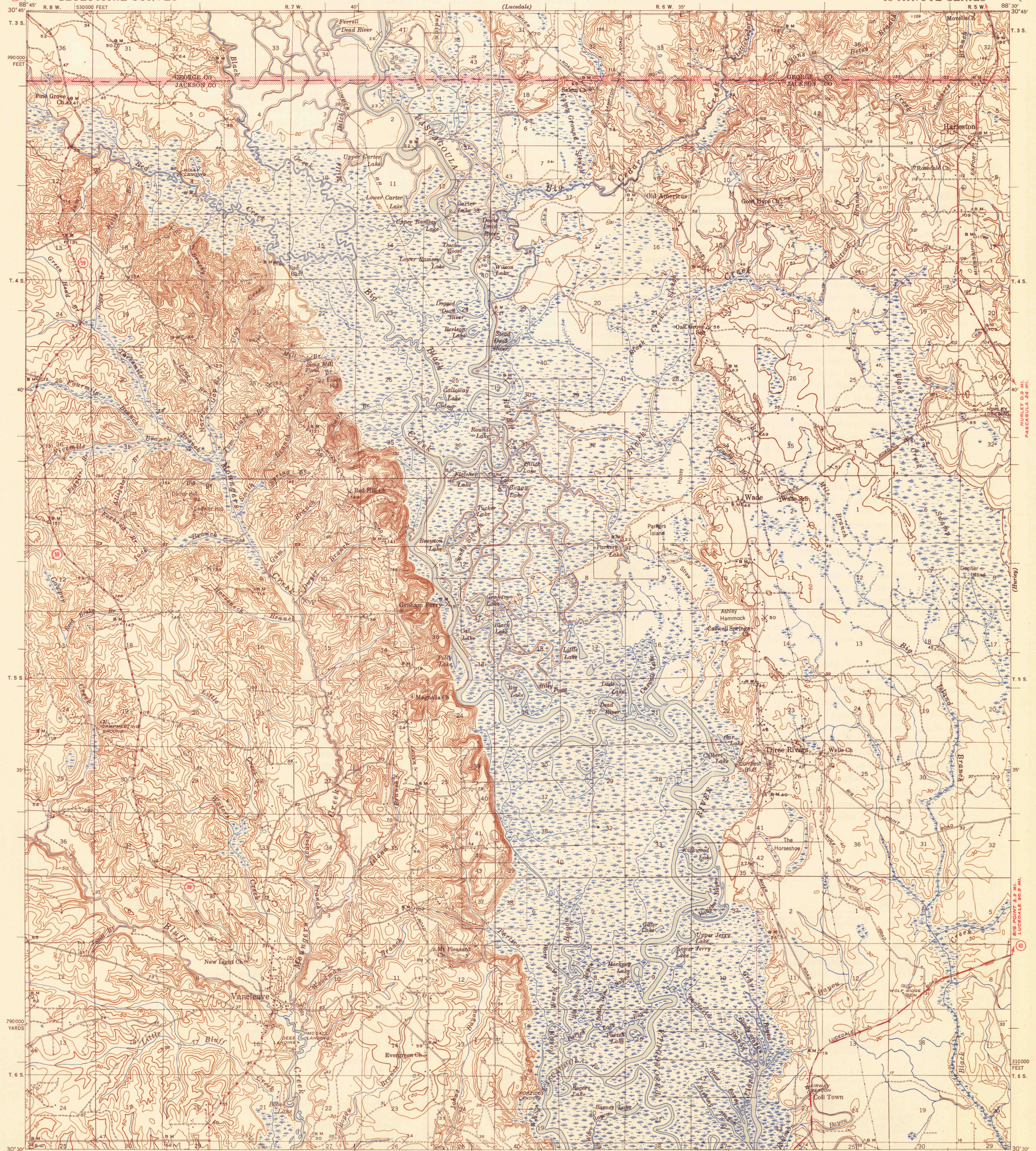
WIGGINS 29 MI. LUCEDALE 19 MI. JUNC. STATE NO. 26 2.2 MI.

LUCEDALE 15.4 MI. AGRICOLA 4.4 MI.

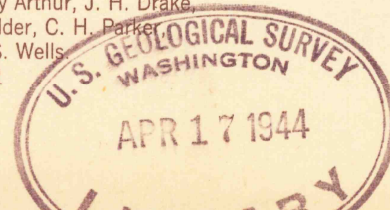
UNITED STATES DEPARTMENT OF THE INTERIOR GEOLOGICAL SURVEY

WAR DEPARTMENT

MISSISSIPPI VANCLEAVE QUADRANGLE 15-MINUTE SERIES

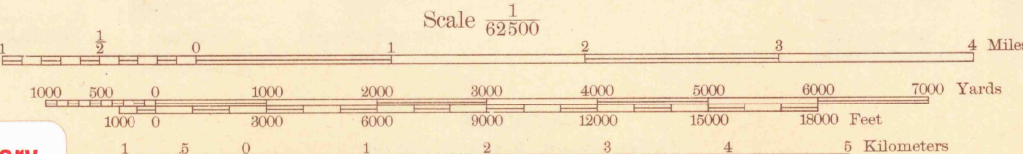


Topography by J. I. Brubaker, E. M. Thompson, T. D. Anderson, Lindsley Arthur, J. H. Drake, L. A. Koffman, T. V. Wilder, C. H. Parker, David Landen, and C. S. Wells. Surveyed in 1940-1941.



APPROXIMATE MEAN DECLINATION, 1941

USGS Library Reston, VA. Topo Archive



Contour interval 10 feet. Datum is mean sea level.

ROAD CLASSIFICATION: Dependable hard-surface, heavy-duty road, Secondary hard-surface, all-weather road, Loose-surface, graded, Unsurfaced, graded, dry weather roads, Dirt road. More than two lanes indicated along road with tick at point of change.

Polyconic projection. 1927 North American datum 5000 yard grid based on U. S. zone system, C 10000 foot grid based on Mississippi (East) rectangular coordinate system.

VANCLEAVE, MISS. Edition of 1944

N 3030-W8830/15