

Maped, edited and published under the direction of the President, Mississippi River Commission, by the U.S. Army Engineer District, Vicksburg, Corps of Engineers.

Compiled in 1967 from Mississippi, 1:24,000, U.S.G.S., Winona, Kilmichael, Vaiden, and Poplar Creek, 1966. Field checked 1967.

1:24,000 Maps compiled by photogrammetric methods from aerial photographs taken 1964, by U.S. Geological Survey, 1966.

Control by Mississippi River Commission and U.S. Army Engineer District, Vicksburg, Corps of Engineers, U.S. Coast and Geodetic Survey and U.S. Geological Survey.

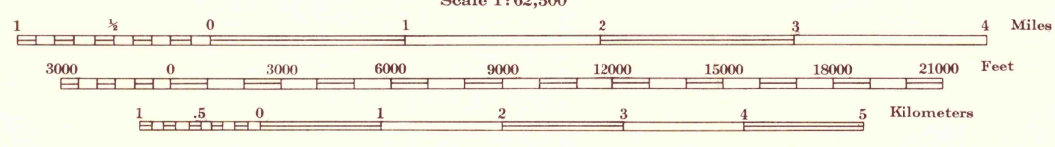
Polyconic Projection 1927, North American Datum.

Descriptions, elevations and geodetic positions of permanent survey marks may be obtained from the U.S. Army Engineer District, Vicksburg, Corps of Engineers, Vicksburg, Mississippi.

Political boundaries are shown according to best available information.

Work under Flood Control Act shown as of December 1967.

This map complies with National Map accuracy standards.



Contour interval 20 feet with supplementary contours at 10 foot intervals

DATUM IS MEAN SEA LEVEL

ONE THOUSAND METER UNIVERSAL TRANSVERSE MERCATOR GRID ZONE 18 IS INDICATED BY TICKS OUTSIDE THE NEATLINE

MISSISSIPPI STATE GRID ZONE EAST IS INDICATED BY DOTTED TICKS OUTSIDE THE NEATLINE AT 10,000 FOOT INTERVALS

MISSISSIPPI STATE GRID ZONE WEST IS INDICATED BY DASH-DOT TICKS OUTSIDE THE NEATLINE AT 10,000 FOOT INTERVALS

Additional copies may be procured from
U. S. Army Engineer District, Vicksburg, Corps of Engineers,
Vicksburg, Miss.
50 cents per copy

Distances on Big Black River above mouth are shown at 5 mile intervals.

APPROXIMATE MEAN DECLINATION 1965
FOR CENTER OF SHEET
ANNUAL MAGNETIC CHANGE 9' WESTERLY

USGS
HISTORIC
TOPOGRAPHIC
DIVISION

LEGEND

Levee	-----	Levee Mile Post	LMP
Secondary Levee	-----	Levee Station	LS
Retards and Dikes	-----	Towhead	TH
Revetment	-----	River Gauge	RG

ROAD DATA 1967

In developed areas only through roads are classified.

Hard surface, heavy duty	=====
Hard surface, medium duty	=====
Loose surface, graded and drained,	=====
or narrow hard surface road	=====
Improved dirt road or street	-----
Unimproved dirt road, trail	-----

Interstate Route U.S. Route State Route

This area is also covered by U.S.G.S., 1:24,000 scale maps of the Winona, Kilmichael NE, Vaiden SW, and Poplar Creek SE 7.5-minute quadrangles, published in 1964.

WINONA, MISS.
EDITION OF 1968
N3315-W8930/15