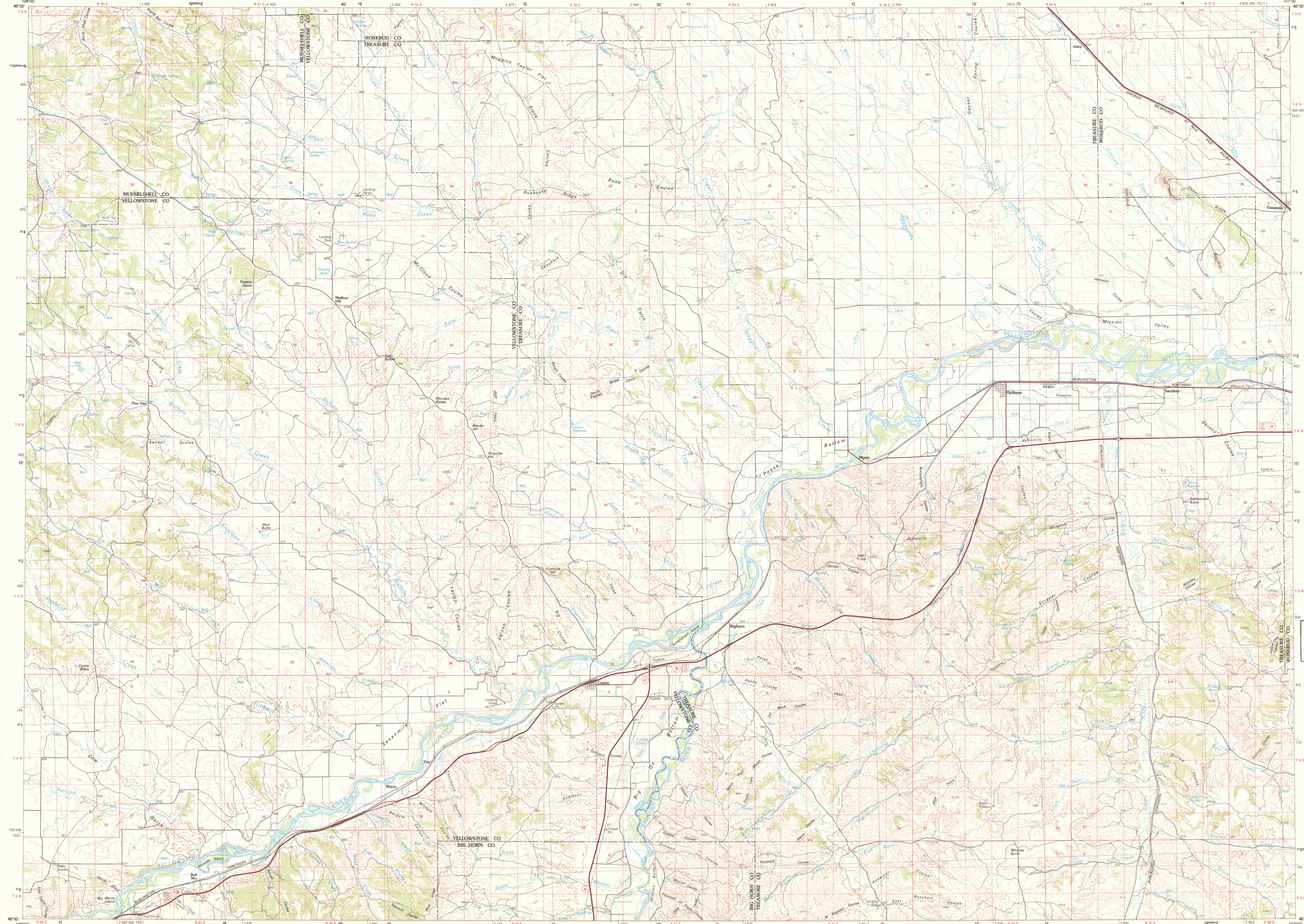
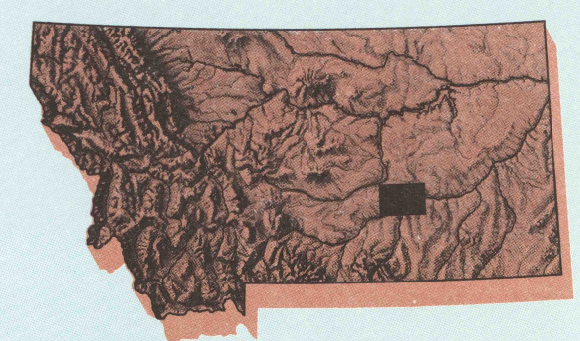


HYSHAM, MONTANA

30X60 MINUTE SERIES (TOPOGRAPHIC)

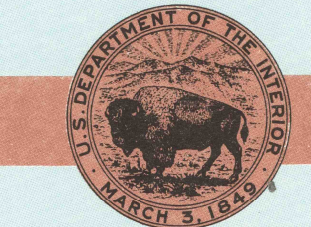


1:100 000-scale metric topographic map of Hysham MONTANA



30 X 60 MINUTE QUADRANGLE SHOWING

- Contours and elevations in meters
- Highways, roads and other manmade structures
- Water features
- Woodland areas
- Geographic names



GEOLOGICAL SURVEY

1979

Prepared by the United States Geological Survey in cooperation with the Soil Conservation Service and Bureau of Land Management

Compiled from USGS 1:24 000-scale topographic maps dated 1960-1972 and from advance materials. Partially revised from aerial photographs taken 1977 and other source data. Revised information not field checked Map edited 1979

Projection and 10 000-meter grid, zone 13: Universal Transverse Mercator
25 000-foot grid ticks based on Montana coordinate system, south zone. 1927 North American datum
To place on the predicted North American Datum 1983 move the projection lines 7 meters north and 51 meters east
There may be private inholdings within the boundaries of the National or State reservations shown on this map

CONTOUR INTERVAL 20 METERS
NATIONAL GEODETIC VERTICAL DATUM OF 1929

THIS MAP COMPLIES WITH NATIONAL MAP ACCURACY STANDARDS

CONVERSION TABLE		DECLINATION DIAGRAM		ADJOINING MAPS	
Meters	Feet	GN	MN	1	2
1	3.2808		32 MILES	3	4
2	6.5617			4	5
3	9.8425			5	6
4	13.1234			6	7
5	16.4042			7	8
6	19.6850			8	
7	22.9659				
8	26.2467				
9	29.5276				
10	32.8084				

To convert meters to feet multiply by 3.2808
To convert feet to meters multiply by 0.3048

UTM grid convergence (GN) and 1979 magnetic declination (MN) at center of map Diagram is approximate

1	2	3
Musselshell	Melrose	Angola
Roundup	Tongue	Billings
Hardy	Lame Deer	

FOR SALE BY U. S. GEOLOGICAL SURVEY, DENVER, COLORADO 80225 OR RESTON, VIRGINIA 22092

U.S. GEOLOGICAL SURVEY LIBRARY
JUL 02 1999
RESTON, VA

Topographic Map Symbols

- Primary highway, hard surface
- Secondary highway, hard surface
- Light duty road, principal street, hard or improved surface
- Other road or street; trail
- Route marker: Interstate, U. S. State
- Railroad: standard gage; narrow gage
- Bridge; overpass; underpass
- Tunnel: road; railroad
- Built up area; locality; elevation
- Airport; landing field; landing strip
- National boundary
- State boundary
- National or State reservation boundary
- Land grant boundary
- U. S. public lands survey: range, township; section
- Range, township; section line: protected
- Power transmission line; pipeline
- Dam; dam with lock
- Cemetery; building
- Windmill; water well; spring
- Mine shaft; silt or cave; mine, quarry; gravel pit
- Campground; picnic area; U. S. location monument
- Ruins; cliff dwelling
- Dissected surface: strip mine, lava, sand
- Contours: index; intermediate; supplementary
- Bathymetric contours: index; intermediate
- Stream, lake; perennial; intermittent
- Rapids, large and small; falls, large and small
- Area to be submerged; marsh, swamp
- Land subject to controlled inundation; woodland
- Scrub; meadow
- Orchard; vineyard

A pamphlet describing topographic maps is available on request

SCALE 1:100 000

HYSHAM, MONTANA 1070