



1:100,000-scale topographic map showing:

- Highways, roads and other manmade structures
- Water features
- Contours and elevations in meters with conversions to feet
- BLM recreation sites

UNITED STATES DEPARTMENT OF THE INTERIOR  
BUREAU OF LAND MANAGEMENT



Edited and published by the Bureau of Land Management.  
Planimetry partially revised by BLM from various source material. Revised information not field checked.

Base map prepared by the U.S. Geological Survey. Compiled from USGS 1:250,000-scale topographic maps dated 1965-1979, and from advance materials. Partially revised from aerial photographs taken 1980 and other source data. Revised information not field checked. Map dated 1987.

Projection and 10,000-meter grid, zone 12 Universal Transverse Mercator. 25,000-foot grid ticks based on Montana coordinate system, south zone and Idaho coordinate system, east zone, 1927 North American datum. To place on the predicted North American Datum 1983 move the projection lines 12 meters north and 67 meters east. There may be private holdings within the boundaries of the National or State reservations shown on this map.

NATIONAL GEODETIC VERTICAL DATUM OF 1929

THIS MAP COMPLIES WITH NATIONAL MAP ACCURACY STANDARDS

**CONVERSION TABLE**

METERS	FEET
1700	5577
2000	6562
2500	8202
3000	9843
3500	11483
4000	13123
4500	14763
5000	16403
5500	18043
6000	19683
6500	21323
7000	22963
7500	24603
8000	26243
8500	27883
9000	29523
9500	31163
10000	32803

To convert meters to feet multiply by 3.2808  
To convert feet to meters multiply by 0.3048

**DECLINATION DIAGRAM**

**ADJOINING MAPS**

1	2	3
4	5	6
7	8	9

1 Salmon  
2 Dillon  
3 Embo  
4 Leadore  
5 Helges Lake  
6 Barab Peak  
7 Dubois  
8 Ashton

FOR SALE BY  
UNITED STATES DEPARTMENT OF THE INTERIOR  
BUREAU OF LAND MANAGEMENT  
MONTANA STATE OFFICE  
BILLINGS, MT 59107  
AND  
U.S. GEOLOGICAL SURVEY  
DENVER, CO 80225

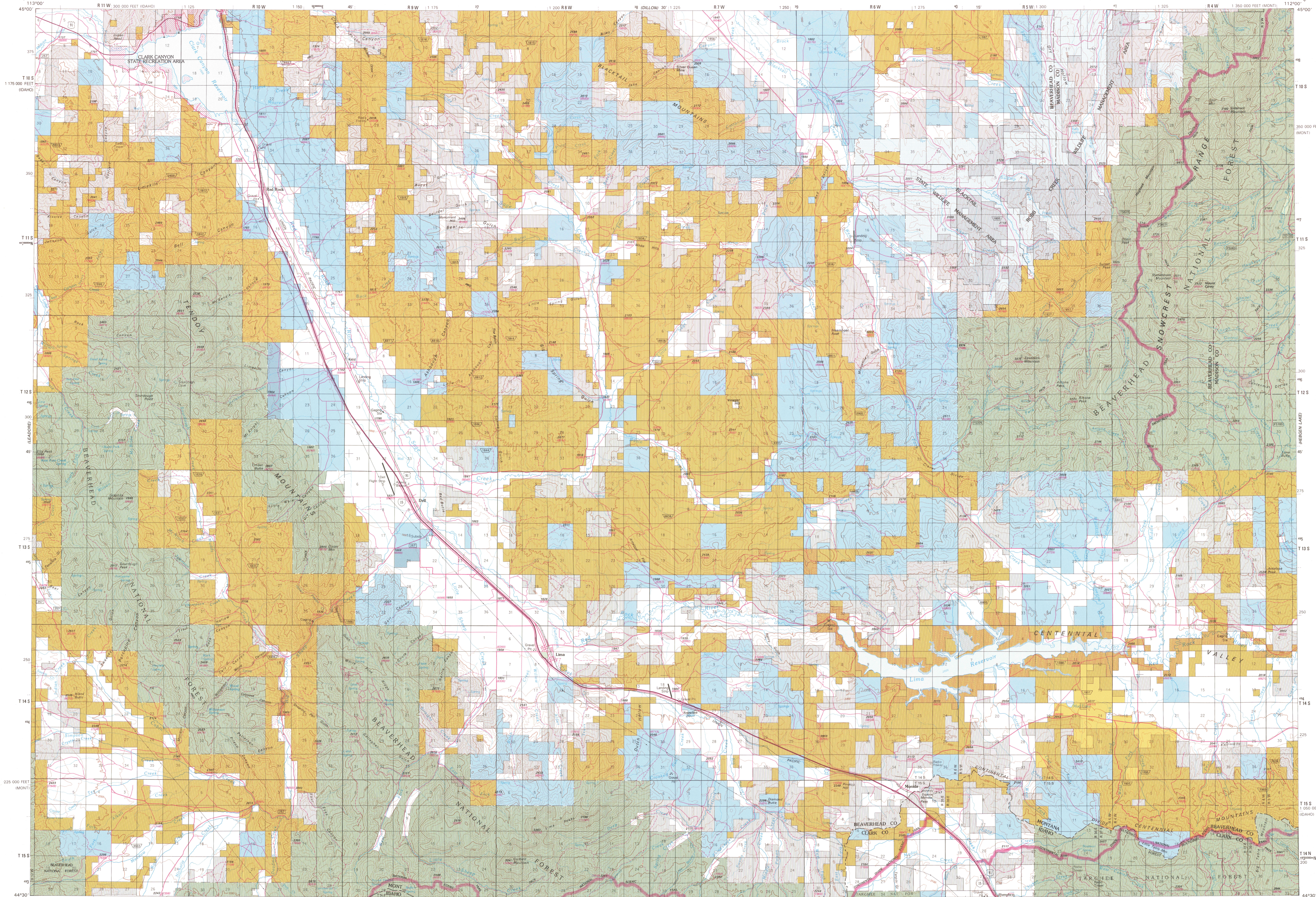
Topographic Map Symbols

Primary highway, hard surface	.....
Secondary highway, hard surface	.....
Light duty, hard, or aggregate surface	.....
Streets, roads, graded/dressed/natural surface	.....
4WD, rough bladed or low-tracked surface	.....
Trail, foot, pack, bicycle, or as labeled	.....
Roads, meter intermediate U.S. State	.....
Railroad standard gauge narrow gauge	.....
Bridge overpass underpass	.....
Tunnel road railroad	.....
Built up areas locally elevated	.....
Airport landing field landing strip	.....
National boundary	.....
State boundary	.....
County boundary	.....
National or State reservation boundary	.....
Land grant boundary	.....
U.S. public lands survey range, township section	.....
Range, township section line, projected	.....
Power transmission line pipeline	.....
Dam dam lock	.....
Cemetery building	.....
Windmill water well spring	.....
Mine shaft oil or cave mine, quarry gravel pit	.....
Compressed picnic areas U.S. location monument	.....
Railroad siding	.....
Dotted surface stony mine, quarry gravel pit	.....
Contours index intermediate supplementary	.....
Bathymetric contours index intermediate	.....
Stream, lake perennial intermittent	.....
Stream, lake small lake, large and small	.....
Area to be submerged marsh, swamp	.....
Land subject to controlled inundation	.....
Special area boundary	.....
BLM recreation area boundary	.....

NOTE TO MAP USERS  
The surface and minerals management status overprints are published as general planning and management tools. Some of the lands, surface and mineral rights to BLM are shown as potential lands due to the lack of information available to BLM with respect to the nature of acquisition. Tracts less than 40 acres are usually omitted, because of the map scale, the official land records in the respective offices of the Bureau of Land Management or other responsible Federal agencies should be checked for accuracy. Status on any specific tract of land, not indicated in the BLM maps should be reported to the respective Bureau of Land Management office from which the map was obtained.  
PUBLIC ACCESS  
Streams, lake perennial intermittent may be traveled by the public unless closed by signage or notice by the land management agency. Public lands interspersed by private lands may not have public access. Permission is required from the private landowner to cross private land, unless access is provided by the

LIMA, MONTANA-IDAHO

30X60 MINUTE SERIES (TOPOGRAPHIC)



Scale: 1:100,000  
 Contour Interval: 50 METERS  
 Supplementary Contour Interval: 25 METERS  
 Conversion of Spot Elevations to Feet shown in parentheses

Scale bars in kilometers and miles.

**MINERALS OWNED BY THE FEDERAL GOVERNMENT**

All minerals	.....
Coal only	.....
Oil and gas only	.....
Oil, gas and coal only	.....
Other	.....
No symbol indicates no Federal minerals	.....

**BUREAU OF LAND MANAGEMENT LAND STATUS LEGEND**

Public Lands (Administered by Bureau of Land Management)	.....	Indian Lands or Reservations	NONE	State Lands	.....	Department of Energy (DOE)	NONE
Oregon & California Lands (O&C Lands)	NONE	Military Reservations and Withdrawals	NONE	Bureau of Reclamation	.....	Roads and Air Facilities	NONE
Coos Bay Region Road (CBRR)	NONE	Corps of Engineers	NONE	Power Withdrawals and Classifications	.....	Macellaneous	NONE
National Forest	.....	Wildlife Refuges	NONE	Federal Agency Protective Withdrawals	.....	State, County, City, Wildlife, Park and Outdoor Recreation Areas	.....
National Grasslands	.....	Bankhead-Jones Land Use Lands (U.L. Lands)	NONE	Public Water Reserves	.....	Acquired Lands (By Administering Agency)	NONE
National Parks and Monuments	.....	Patented Lands	.....				

**BLM STATE-SPECIFIC SYMBOLS**

Route marker	.....
Bureau of Land Management	.....
Forest Service	.....
County	.....

**INDEX TO 1:250,000-SCALE MAPS**

1	Garfield Canyon	17	Dillon Mountain
2	Red Rock	18	Dean Mountain
3	Dell	19	Montezuma
4	Beach Creek	20	Limo
5	Price Creek	21	Henry Gulch
6	Price Creek NE	22	Limo Spur
7	Spur Mountain	23	Beauregard Creek
8	Spur Mountain	24	Antelope Peak
9	Price Canyon	25	Isabel Butte
10	Kidd	26	Cobocose Canyon
11	Briggs Ranch	27	Waggon Gulch
12	Rock Island Ranch	28	Limo Peaks
13	Wagner Hill	29	Snowflake
14	Whitney Spring	30	Monroe
15	Antelope Peak	31	Corral Creek
16	Stonewall Mountain	32	Big Table Mountain