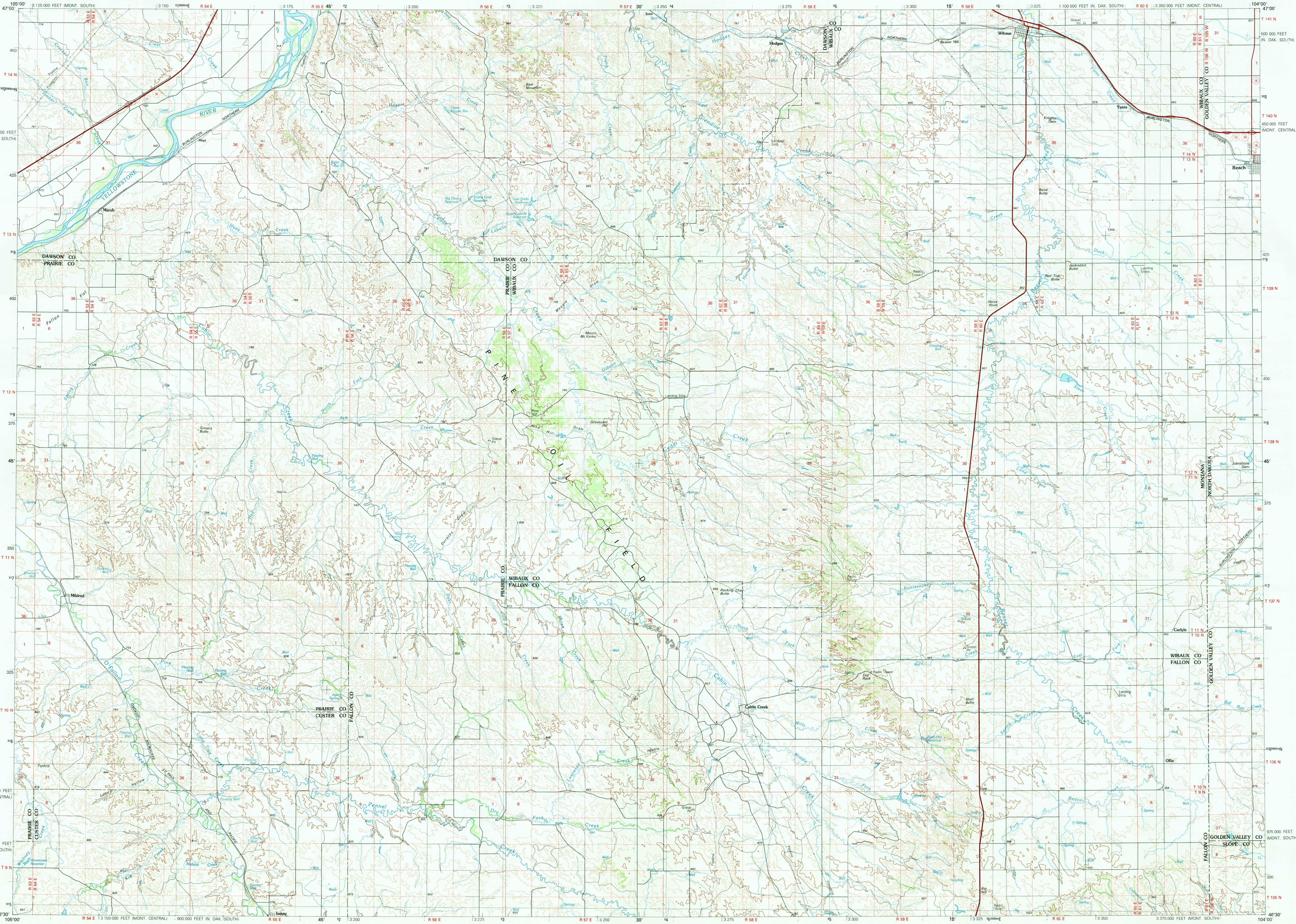


WIBAUX, MONTANA-NORTH DAKOTA

30X60 MINUTE SERIES (TOPOGRAPHIC)



1:100 000-scale metric
topographic map of
Wibaux
MONTANA-NORTH DAKOTA



30 X 60 MINUTE QUADRANGLE
SHOWING

- Contours and elevations in meters
- Highways, roads and other manmade structures
- Water features
- Woodland areas
- Geographic names



GEOLOGICAL SURVEY

1981

Produced by the United States Geological Survey

Compiled from USGS 1:24 000-scale topographic maps dated 1966-1981 and from advance materials. Partially revised from aerial photographs taken 1974-1978 and other source data. Revised information not field checked. Map edited 1981.

Projection and 10 000-meter grid, zone 13 Universal Transverse Mercator. 25 000-foot grid ticks based on Montana coordinate system central and south zones, and North Dakota coordinate system south zone. 1927 North American datum. To place on the predicted North American Datum 1983 move the projection lines 4 meters north and 41 meters east.

CONTOUR INTERVAL 20 METERS
NATIONAL GEODETIC VERTICAL DATUM OF 1929

THIS MAP COMPLIES WITH NATIONAL MAP ACCURACY STANDARDS

CONVERSION TABLE		DECLINATION DIAGRAM	ADJOINING MAPS			
Meters	Feet		1	2	3	
1	3.2808		1	2	3	
2	6.5616		4	5		
3	9.8425					
4	13.1234					
5	16.4043					
6	19.6850					
7	22.9659					
8	26.2467					
9	29.5276					
10	32.8084					
To convert meters to feet multiply by 3.2808		UTM grid convergence (GN) and 1981 magnetic declination (MN) at center of map. Diagram is approximate.				
To convert feet to meters multiply by 0.3048						

FOR SALE BY U. S. GEOLOGICAL SURVEY, DENVER, COLORADO 80225 OR RESTON, VIRGINIA 22092

Topographic Map Symbols

Primary highway, hard surface	
Secondary highway, hard surface	
Light duty road, principal street, hard or improved surface	
Other road or street; trail	
Route marker: interstate, U. S. State	
Railroad: standard gage; narrow gage	
Bridge: overpass; underpass	
Tunnel: road; railroad	
Built up area; locality; elevation	
Airport; landing field; landing strip	
National boundary	
State boundary	
County boundary	
National or State reservation boundary	
Land grant boundary	
U. S. public lands survey: range, township; section	
Range, township; section line: protracted	
Power transmission line; pipeline	
Dam; dam with lock	
Cemetery; building	
Windmill; water well; spring	
Mine shaft; adit or cave; mine, quarry; gravel pit	
Campground; picnic area; U. S. location monument	
Ruins; cliff dwelling	
Distorted surface: strip mine, lava; sand	
Contours: index; intermediate; supplementary	
Bathymetric contours: index; intermediate	
Stream, lake, pond; intermittent	
Rapids; large and small; falls, large and small	
Area to be submerged; marsh, swamp	
Land subject to controlled inundation; woodland	
Scrub; mangrove	
Orchard; vineyard	

A pamphlet describing topographic maps is available on request

WIBAUX, MONTANA-NORTH DAKOTA
N4630-W10400/30x60

1981