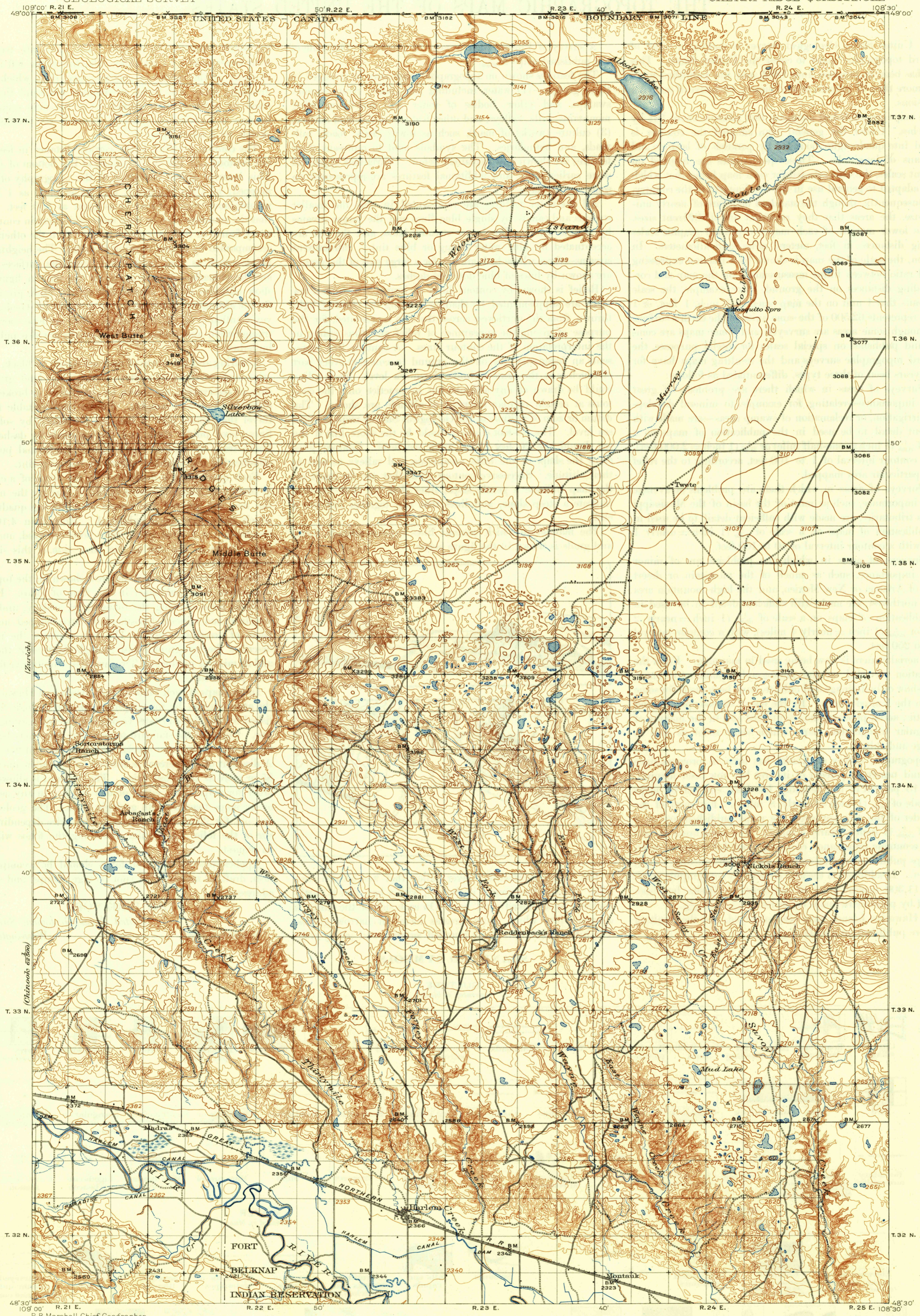


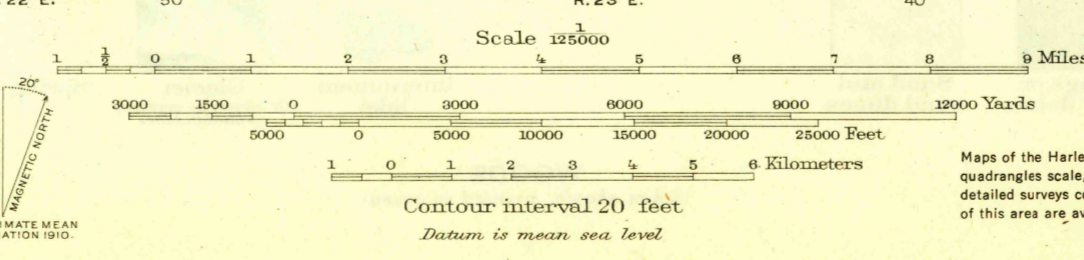
U. S. G. S.
FILE COPY
Inspection and Editing.

UNITED STATES
DEPARTMENT OF THE INTERIOR
GEOLOGICAL SURVEY

MONTANA
(BLAINE COUNTY)
CHERRY RIDGE QUADRANGLE



R. B. Marshall, Chief Geographer.
Sledge Tatum, Geographer in charge.
Topography by Basil Duke, C. A. Ecklund, and C. A. Leonard.
South half reduced from Harlem and Wayne Creek sheets.
Control by H. L. Baldwin, Jr., J. T. Stewart, and W. R. Winstead.
Surveyed in 1903 and 1910.



Edition of Aug. 1913, reprinted 1946
Polyconic projection. To place on North American datum move projection lines 400 feet north and 100 feet west.

Maps of the Harlem and Wayne Creek quadrangles scale, 1:62 500 from more detailed surveys covering the south half of this area are available.

CHERRY RIDGE, MONT.
N 4830-W 10830/30

U. S. G. S.
FILE COPY
Inspection and Editing.

USGS
Historical File
Topographic Division

MAY 13 1946

2140