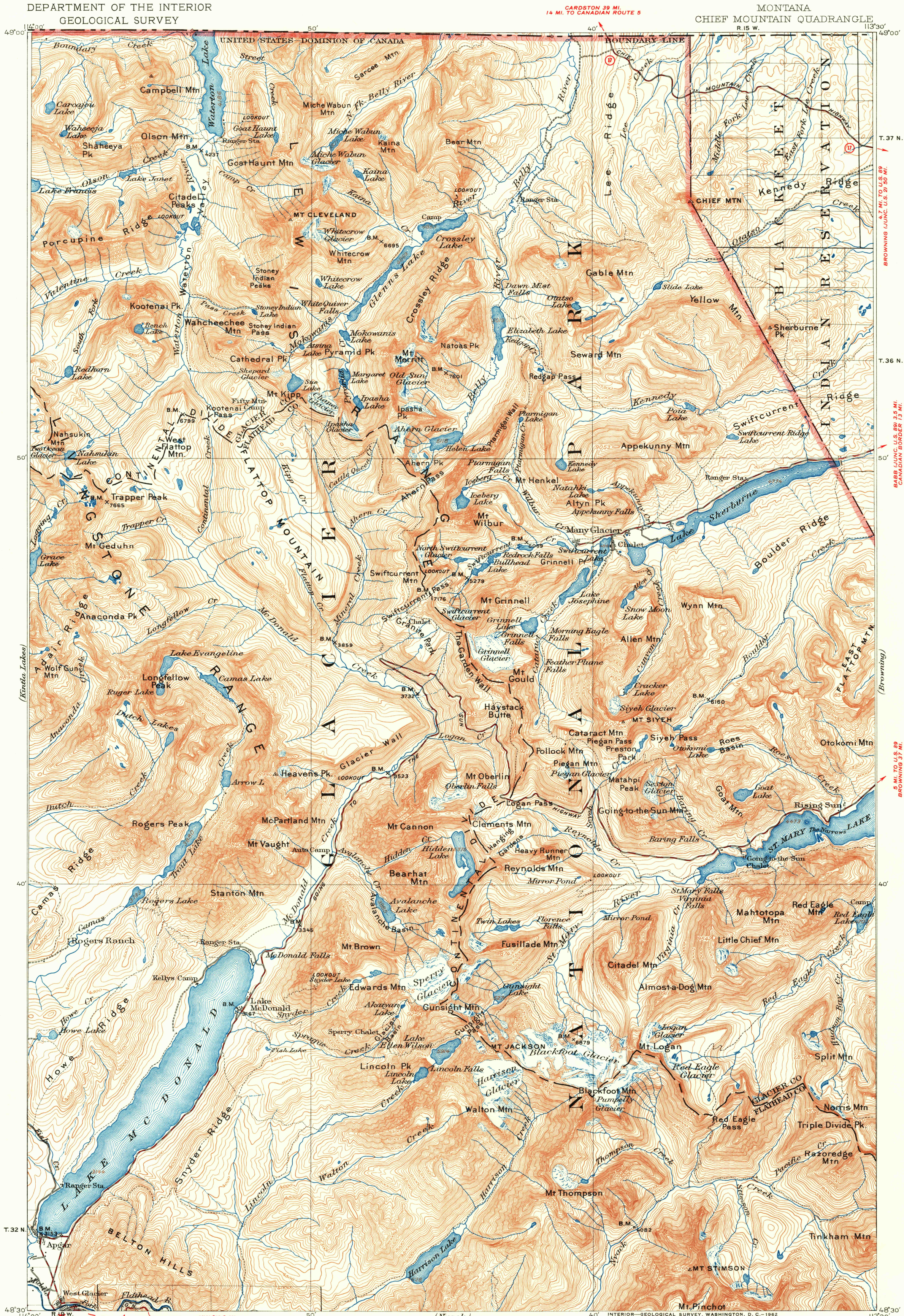


UNITED STATES
DEPARTMENT OF THE INTERIOR
GEOLOGICAL SURVEY

MONTANA
CHIEF MOUNTAIN QUADRANGLE



Revised in part, 1938
CORAM 7 MI.
KALISPELL 31 MI.
ROAD CLASSIFICATION
Medium-duty ——— Light-duty ———
Unimproved dirt - - - - -
U.S. Route ——— State Route ———
APPROXIMATE MEAN
DECLINATION, 1938

(Nyack)
SCALE 1:25000
CONTOUR INTERVAL 100 FEET
DATUM IS MEAN SEA LEVEL
(Readjustment indicates that elevations
on this map should be increased 10 feet)

Polyconic projection. To place on 1927 North American datum
move projection lines 650 feet north and 150 feet east
DIAGRAM OF TOWNSHIP
6 5 4 3 2 1
7 8 9 10 11 12
13 14 15 16 17 18
19 20 21 22 23 24
25 26 27 28 29 30
31 32 33 34 35 36
CHIEF MOUNTAIN, MONT.
N 4830-W 11330/30
1938

FOR SALE BY U.S. GEOLOGICAL SURVEY, DENVER 25, COLORADO OR WASHINGTON 25, D.C.
A FOLDER DESCRIBING TOPOGRAPHIC MAPS AND SYMBOLS IS AVAILABLE ON REQUEST

USGS
Historical File
Topographic Division

10310

FILE COPY
TOPOGRAPHIC DIVISION

JUN 13 1962