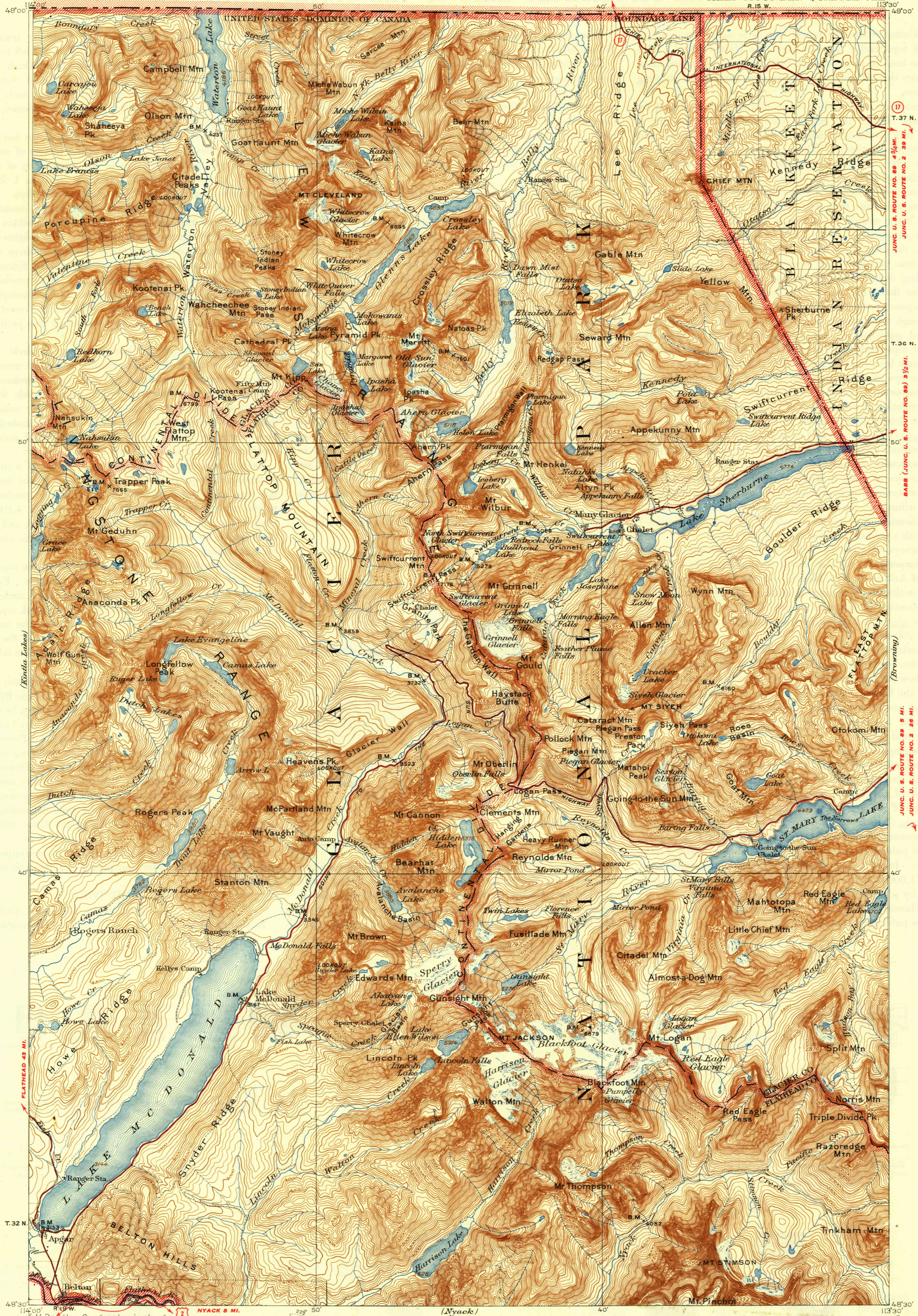


UNITED STATES  
DEPARTMENT OF THE INTERIOR  
GEOLOGICAL SURVEY

PINCHER 52 MI.  
JUNC. CANADIAN ROUTE NO. 5 20 MI.

MONTANA  
CHIEF MOUNTAIN QUADRANGLE



114°00' R. 15 W.  
E. M. Douglas, Geographer in charge  
Triangulation by H. L. Baldwin, Jr. and R. H. Chapman  
Topography by Francois E. Matthes and R. H. Sargent  
Surveyed in 1900-1902  
Revised in part, 1938  
CORAN 7 M.  
KALISPELL 53 MI.

Federal Board of Surveys & Maps  
FILE COPY  
Map Information Office  
MAY 21 1942

APPROXIMATE MEAN  
DECLINATION, 1902

Scale 1:25,000  
Miles  
Kilometers  
Contour interval 100 feet  
Datum is mean sea level  
Readjustment indicates that elevations  
on this map should be increased by 10 feet



Polyconic projection. To place on North American datum  
move projection lines 530 feet north and 200 feet east.

ROUTES USUALLY TRAVELED  
HARD IMPROVED SURFACES  
OTHER SURFACE IMPROVEMENTS  
U. S. ROUTE 1941  
STATE ROUTE  
CHIEF MOUNTAIN, MONT.  
Edition of 1904  
reprinted 1942  
with corrections  
N 4830-W 11330/30