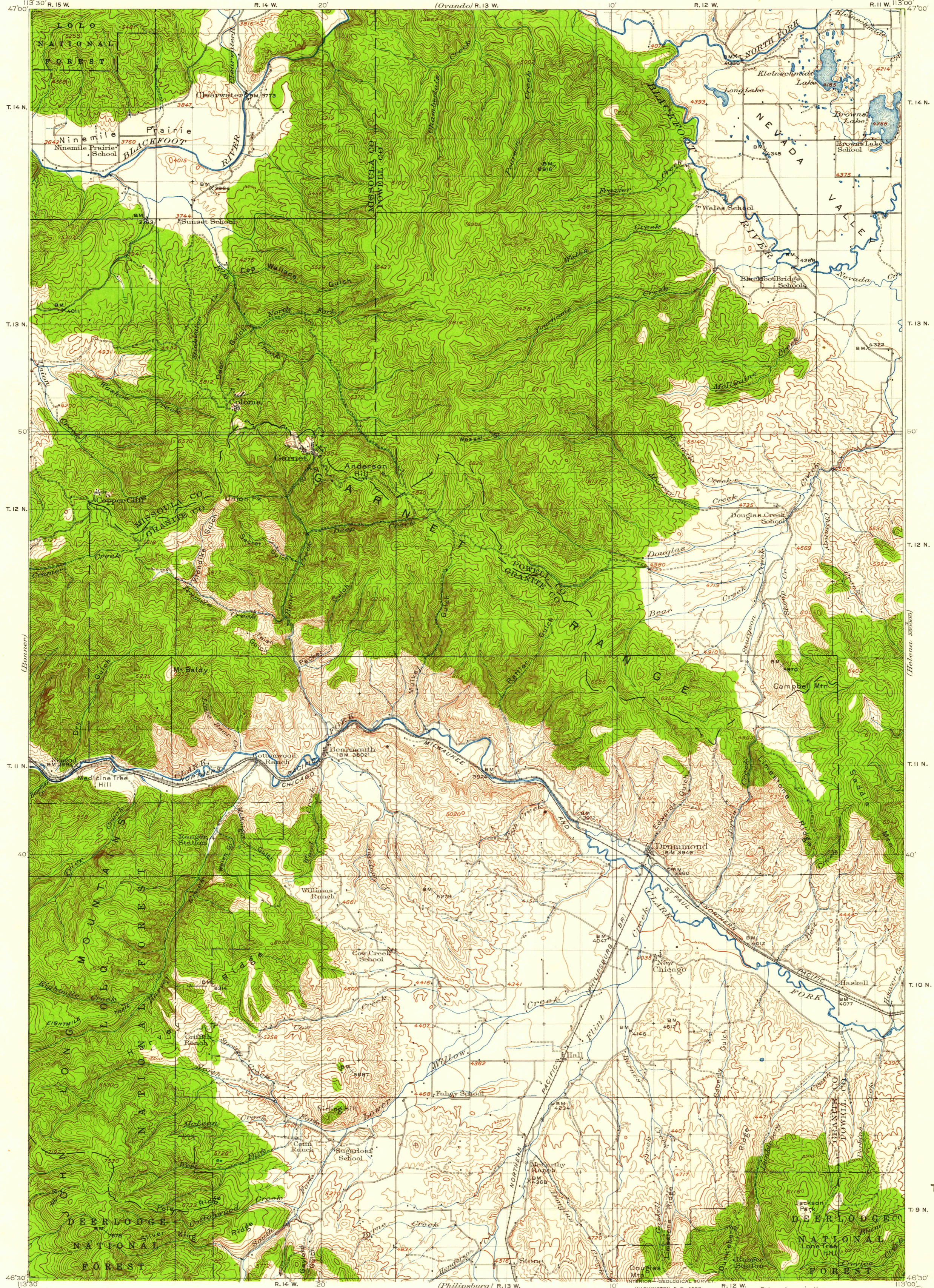


UNITED STATES
DEPARTMENT OF THE INTERIOR
GEOLOGICAL SURVEY

MONTANA
DRUMMOND QUADRANGLE



R. B. Marshall, Chief Geographer,
Sledge Tatum, Geographer in charge.
Topography by K. W. Trimble and C. G. Anderson.
Control by U. S. Coast and Geodetic Survey, H. L. Baldwin, Jr.,
F. B. Whitlock, J. T. Stewart, G. H. Kendall, and
F. E. Fellows.
Surveyed in 1915 and 1919.

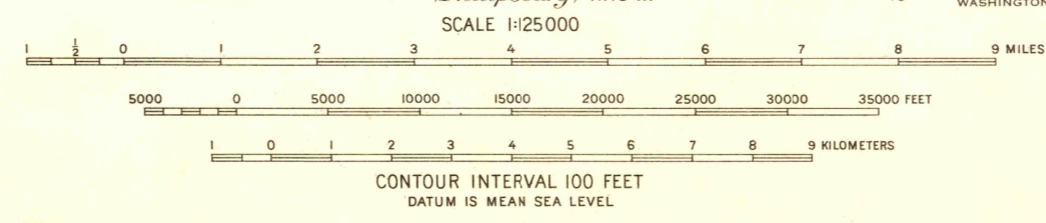


DIAGRAM OF TOWNSHIP

6	5	4	3	2	1
7	8	9	10	11	12
18	17	16	15	14	13
19	20	21	22	23	24
30	29	28	27	26	25
31	32	33	34	35	36

MONT.
DRUMMOND
N 4630 - W 11300 / 30
1919

FOR SALE BY U. S. GEOLOGICAL SURVEY, DENVER 2, COLORADO OR WASHINGTON 25, D. C.
A FOLDER DESCRIBING TOPOGRAPHIC MAPS AND SYMBOLS IS AVAILABLE ON REQUEST

USGS
Historical File
Topographic Division

U.S.G.S.
FILE COP
TOPOGRAPHIC DIVISION

AUG - 7 1958

1455