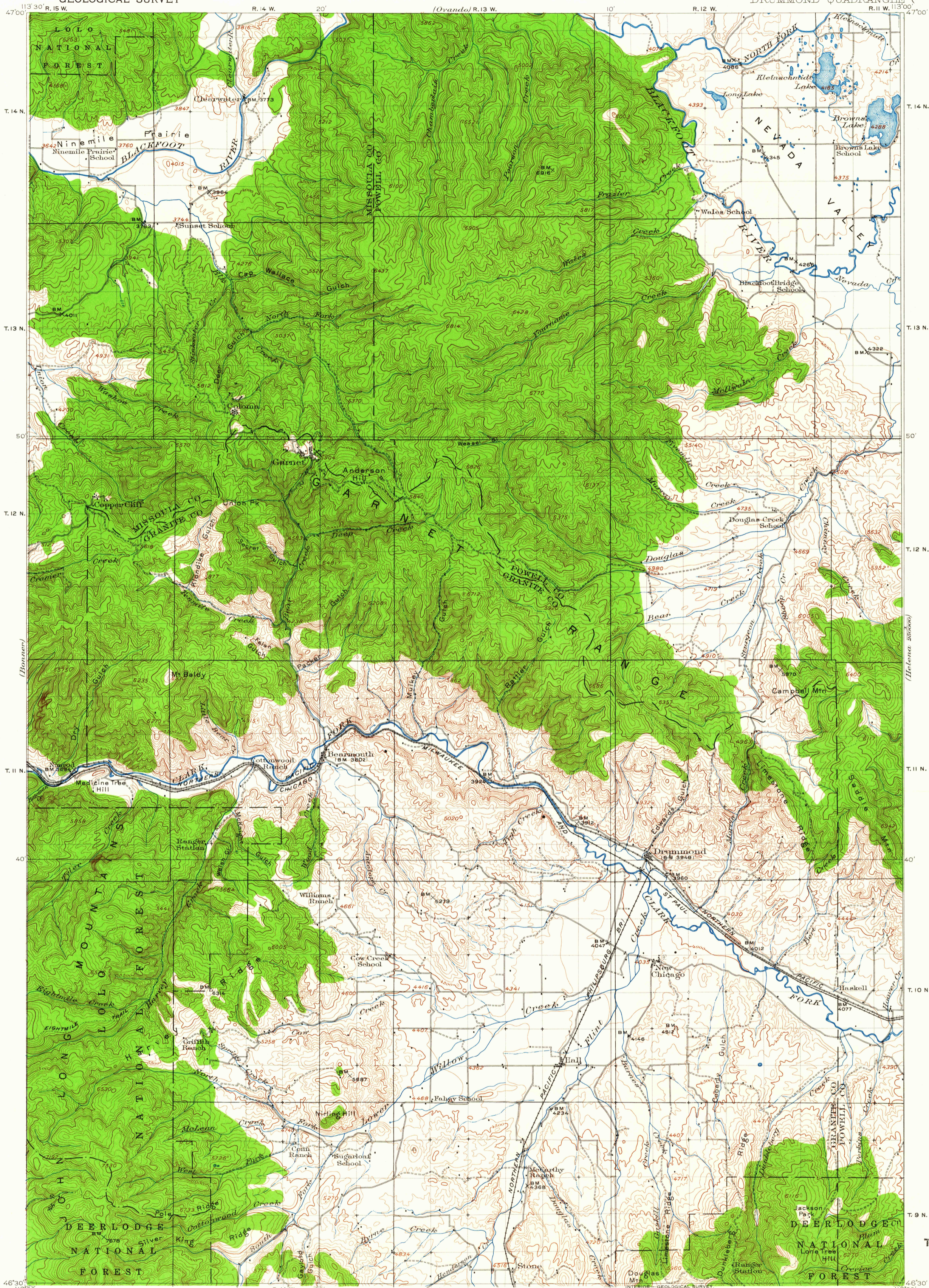


UNITED STATES  
DEPARTMENT OF THE INTERIOR  
GEOLOGICAL SURVEY

MONTANA  
DRUMMOND QUADRANGLE



R. B. Marshall, Chief Geographer.  
Sledge Tatum, Geographer in charge.  
Topography by K. W. Trimble and C. G. Anderson.  
Control by U. S. Coast and Geodetic Survey, H. L. Baldwin, Jr.,  
F. B. Whitlock, J. T. Stewart, G. H. Kendall, and  
F. E. Fellows.  
Surveyed in 1915 and 1919.

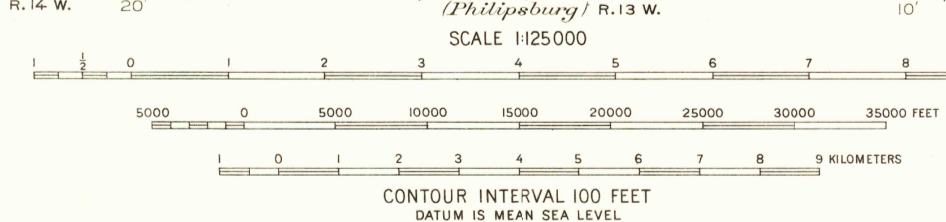


DIAGRAM OF TOWNSHIP

6	5	4	3	2	1
7	8	9	10	11	12
18	17	16	15	14	13
19	20	21	22	23	24
30	29	28	27	26	25
31	32	33	34	35	36

MONT.  
DRUMMOND  
N 4630 W 11300/30  
1919

FOR SALE BY U. S. GEOLOGICAL SURVEY, DENVER 25, COLORADO OR WASHINGTON 25, D. C.  
A FOLDER DESCRIBING TOPOGRAPHIC MAPS AND SYMBOLS IS AVAILABLE ON REQUEST

The south half of this area also covered  
by 15 minute, 1:62,500 scale maps: Bearmouth  
1959, and Drummond 1958

USGS  
Historical File  
Topographic Division

FILE COPY  
TOPOGRAPHIC DIVISION

MAY 28 1963