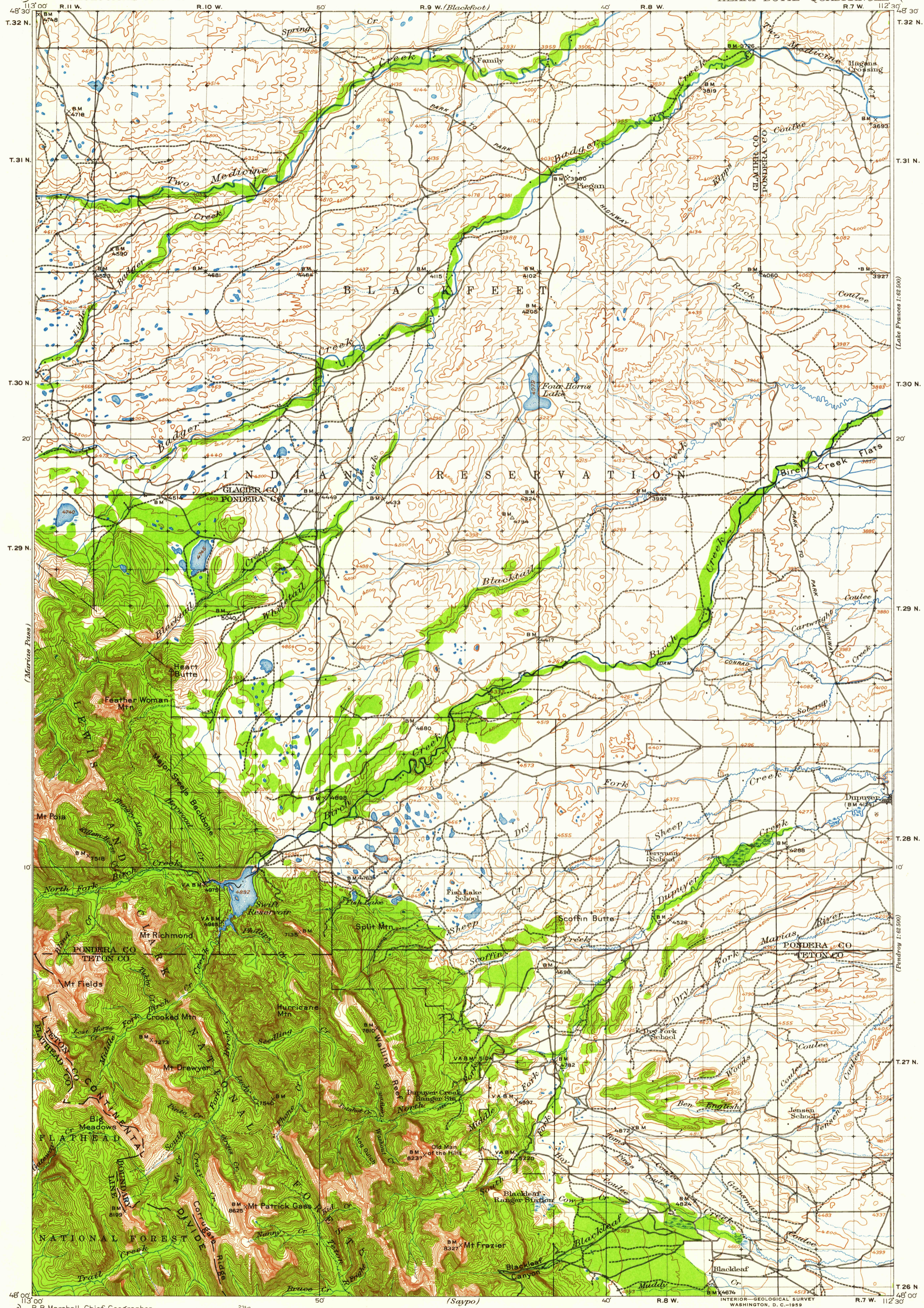


UNITED STATES
DEPARTMENT OF THE INTERIOR
GEOLOGICAL SURVEY

MONTANA
HEART BUTTE QUADRANGLE



R. B. Marshall, Chief Geographer.
Sledge Tatum, Geographer in charge.
Topography by General Land Office, R. T. Evans,
O. H. Nelson, and D. H. Watson.
Control by H. L. Baldwin and G. H. Kendall.
Surveyed in 1907 and 1914.

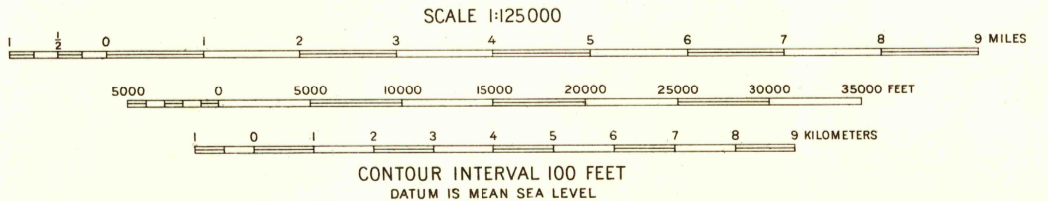
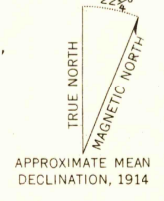


DIAGRAM OF TOWNSHIP

6	5	4	3	2	1
7	8	9	10	11	12
13	14	15	16	17	18
19	20	21	22	23	24
25	26	27	28	29	30
31	32	33	34	35	36

Polyconic projection
HEART BUTTE, MONT.
N 4800 - W 11230 / 30
1914

FOR SALE BY U. S. GEOLOGICAL SURVEY, DENVER 2, COLORADO OR WASHINGTON 25, D. C.
A FOLDER DESCRIBING TOPOGRAPHIC MAPS AND SYMBOLS IS AVAILABLE ON REQUEST

USGS
Historical File
Topographic Division

U.S.G.S.
FILE COPY
TOPOGRAPHIC DIVISION

MAY 26 1959

1502