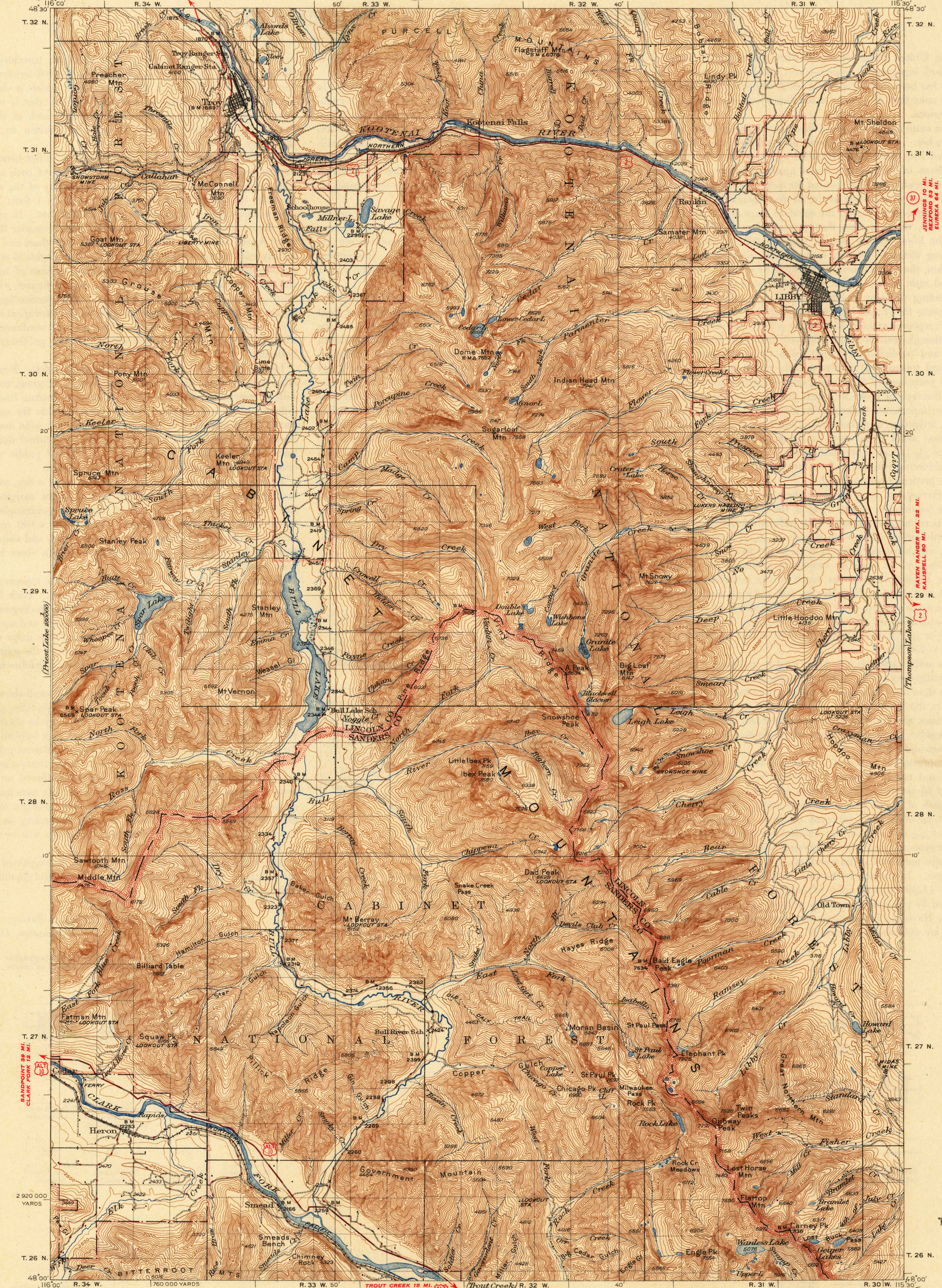


UNITED STATES
DEPARTMENT OF THE INTERIOR
GEOLOGICAL SURVEY

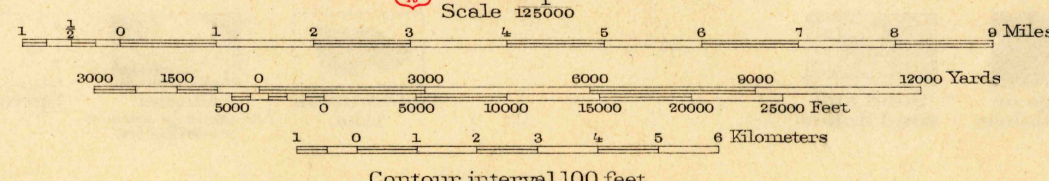
MONTANA
LIBBY QUADRANGLE
R. 31 W. 115 30'



Topography by J.L. Lewis
Surveyed in 1927, 1929 and 1930

Polyconic projection, 1927 North American datum
5000 yard grid based upon U.S. zone system, F

ROAD CLASSIFICATION 1946
Dependable hard surface
heavy-duty road
Secondary hard surface
all weather road
More than two lanes indicated along road with tick at point of change 2 LANE, 4 LANE
Dry weather roads
Loose surface graded
Unsurfaced, graded
Dirt road
State Route (6)



USGS
Historical File
Topographic Division

LIBBY, MONT.
Edition of 1932
reprinted 1947
with corrections
N4800-W1630/30