

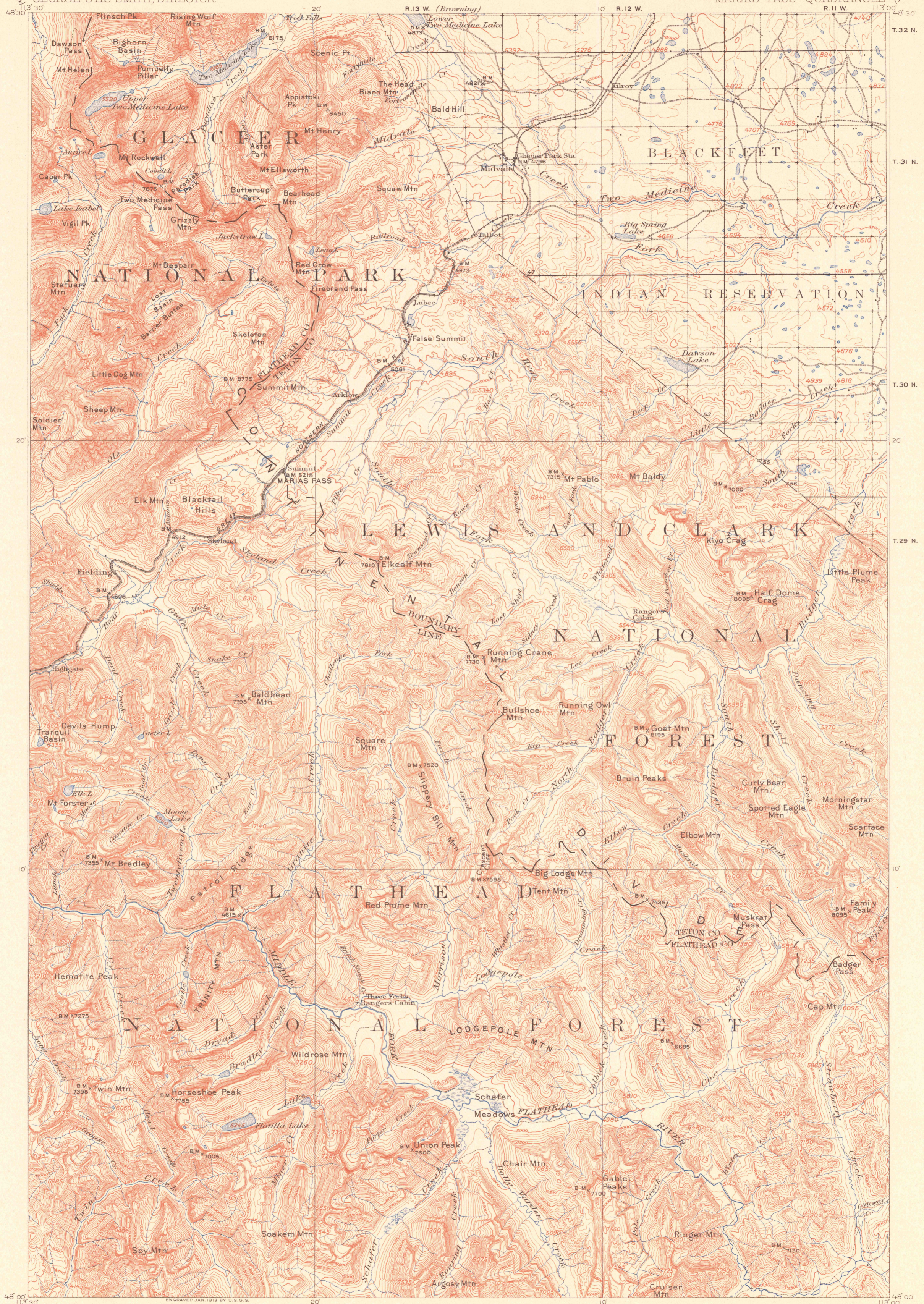
(Chief Mountain)

U.S. GEOLOGICAL SURVEY
GEORGE OTIS SMITH, DIRECTOR.

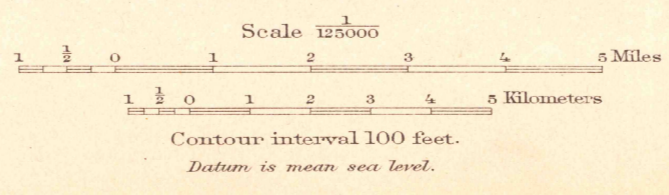
TOPOGRAPHY

MONTANA
MARIAS PASS QUADRANGLE

(Blackfoot)



ENGRAVED JAN. 1913 BY U.S.G.S.
 R.B. Marshall, Chief Geographer.
 Sledge Tatum, Geographer in charge.
 Topography by General Land Office, R.T. Evans,
 and F.L. Whaley.
 Control by A.H. Thompson, Goynes Drummond,
 and J.T. Stewart.
 Surveyed in 1910-1911.



Edition of May 1913.

DIAGRAM OF TOWNSHIP

6	5	4	3	2	1
7	8	9	10	11	12
18	17	16	15	14	13
19	20	21	22	23	24
30	29	28	27	26	25
31	32	33	34	35	36

MARIAS PASS