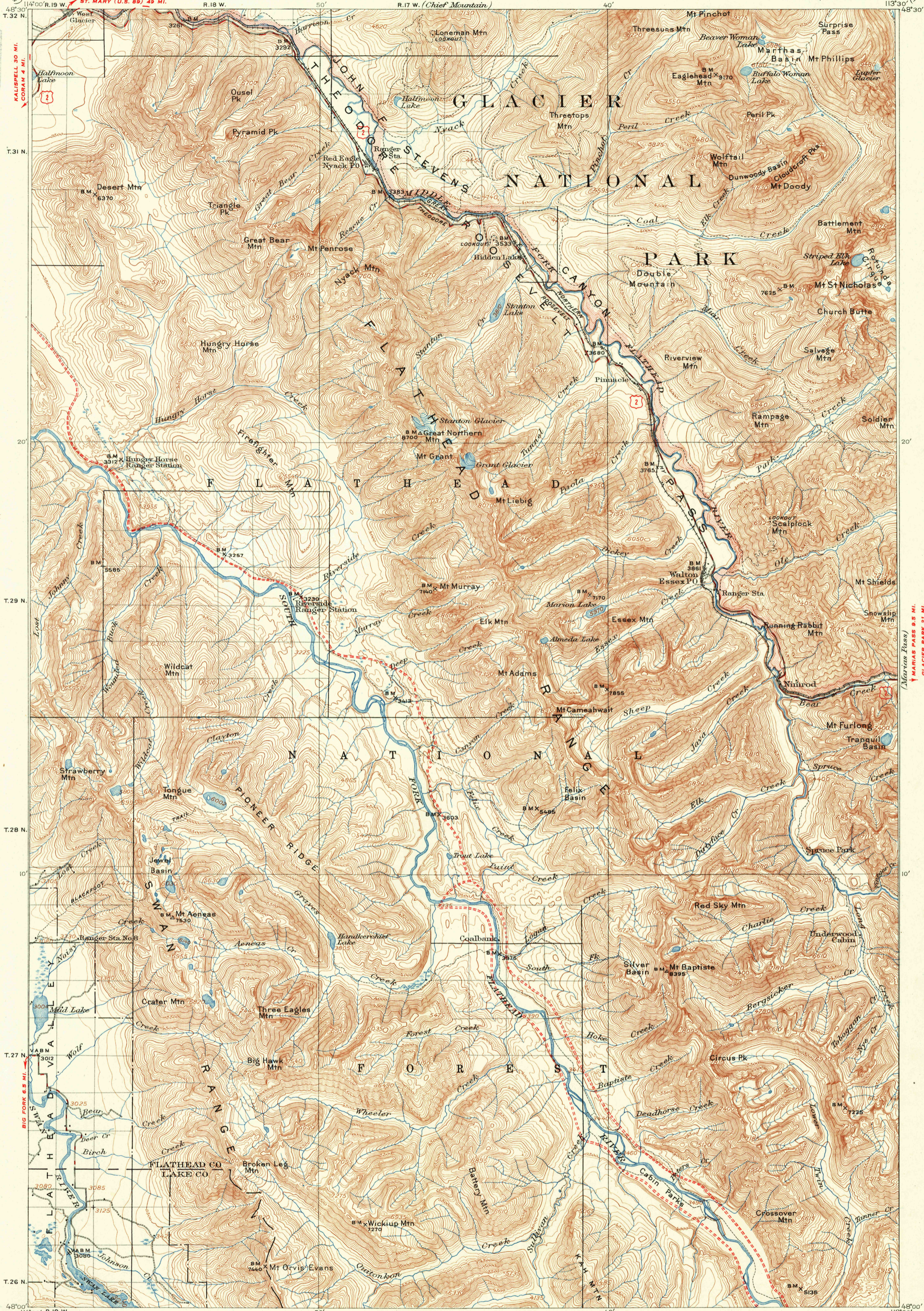


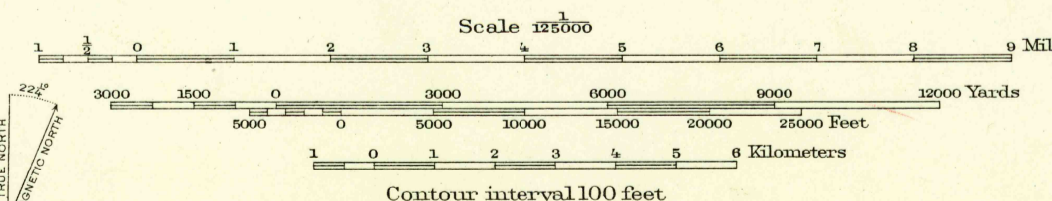
U.S.G.S.
FILE COPY
Inspection and Editing.



14°00' R. 19 W. Chief Mountain
14°00' R. 19 W. St. Mary (U.S. 89) 49 MI.
14°00' R. 19 W. Chief Mountain
14°00' R. 19 W. St. Mary (U.S. 89) 49 MI.
14°00' R. 19 W. Chief Mountain
14°00' R. 19 W. St. Mary (U.S. 89) 49 MI.

R. B. Marshall, Chief Geographer
Sledge Tatum, Geographer in charge
Topography by R. T. Evans, Arthur Shiles, S. T. Penick,
H. W. Peabody, W. J. Forster, C. C. Holder, and Lee Morrison
Control by R. H. Chapman, J. T. Stewart, and Chas. Hartmann, Jr.
Surveyed in 1907 and 1910-1912
Revised in part, 1938

ROAD CLASSIFICATION
HARD-SURFACE ALL WEATHER ROADS DRY WEATHER ROADS
Heavy-duty ——— 4 LANE LANE Improved dirt
Medium-duty ——— 4 LANE LANE Unimproved dirt
Loose-surface, graded, or narrow hard-surface — — — —
U. S. Route State Route
ROADS UNSURVEYED — — — — —



Polyconic projection
MONT. NYACK
Edition of 1914
corrected 1942
reprinted 1951
N 4800 - W 11330/30

FOR SALE BY U.S. GEOLOGICAL SURVEY, FEDERAL CENTER, DENVER, COLORADO OR WASHINGTON 25, D.C.
A FOLDER DESCRIBING TOPOGRAPHIC MAPS AND SYMBOLS IS AVAILABLE ON REQUEST

USGS
Historical File
Topographic Division

U.S.G.S.
FILE COPY
Inspection and Editing.