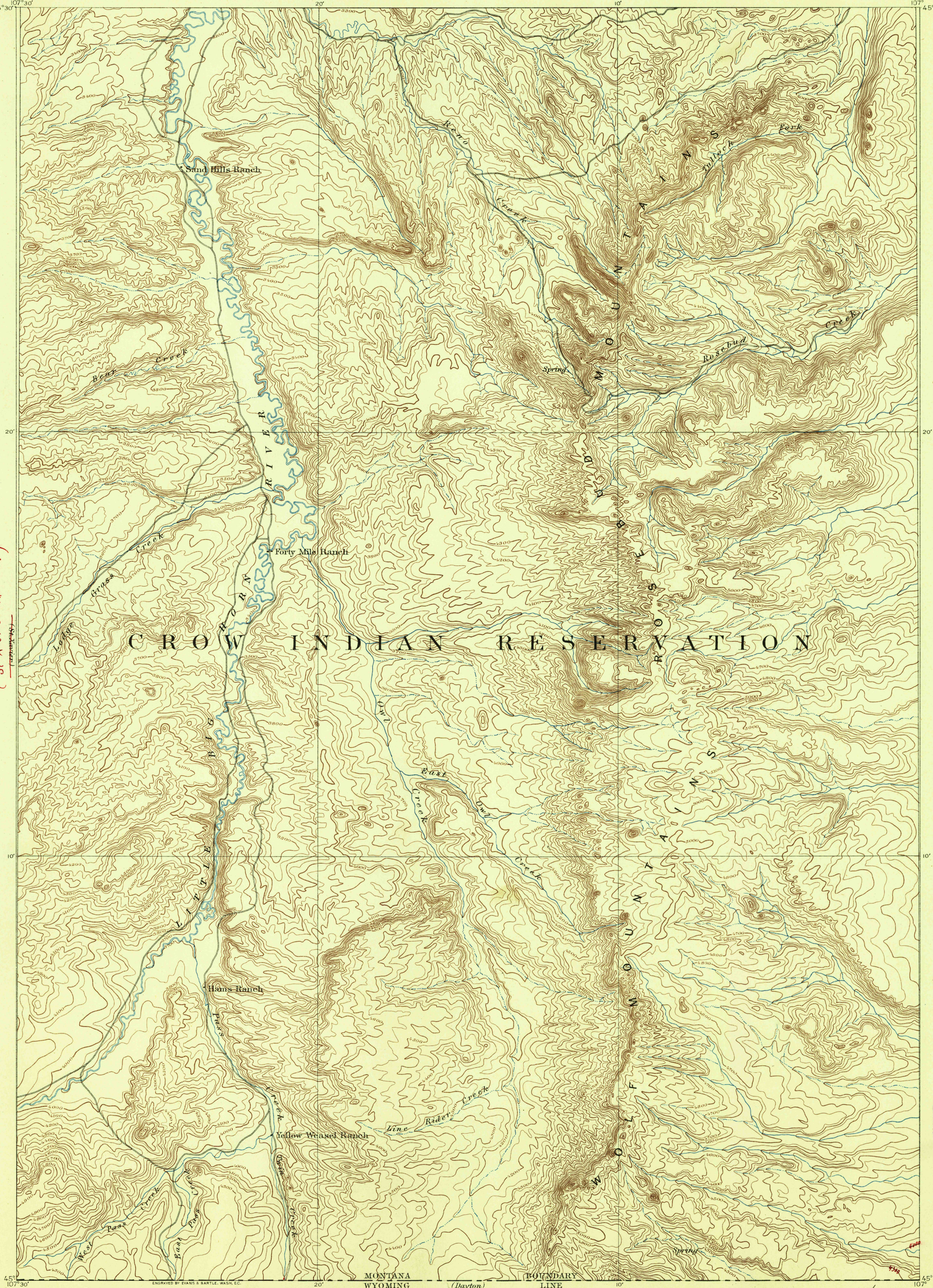


(St Xavier Mission)

U.S. GEOLOGICAL SURVEY
J. W. POWELL, DIRECTOR.

U. S. G. S.
FILE COPY
Editor of Topographic Maps.

MONTANA
ROSEBUD SHEET



A. H. Thompson, Geographer.
Frank Tweedy, Topographer in charge.
Triangulation by Frank Tweedy.
Topography by Alex. C. Barclay.
Surveyed in 1891-92.

U. S. G. S.
FILE COPY
Ed. Div. Topographic Maps.

Scale 1:25,000
1 0 1 2 3 4 5 Miles
Contour Interval 50 feet

Ed. Div. Topographic Maps.
Edition of June 1894.

U. S. G. S.
FILE COPY
Ed. Div. Topographic Maps.

USGS
Historical File
Topographic Division

Rosebud, Mont.