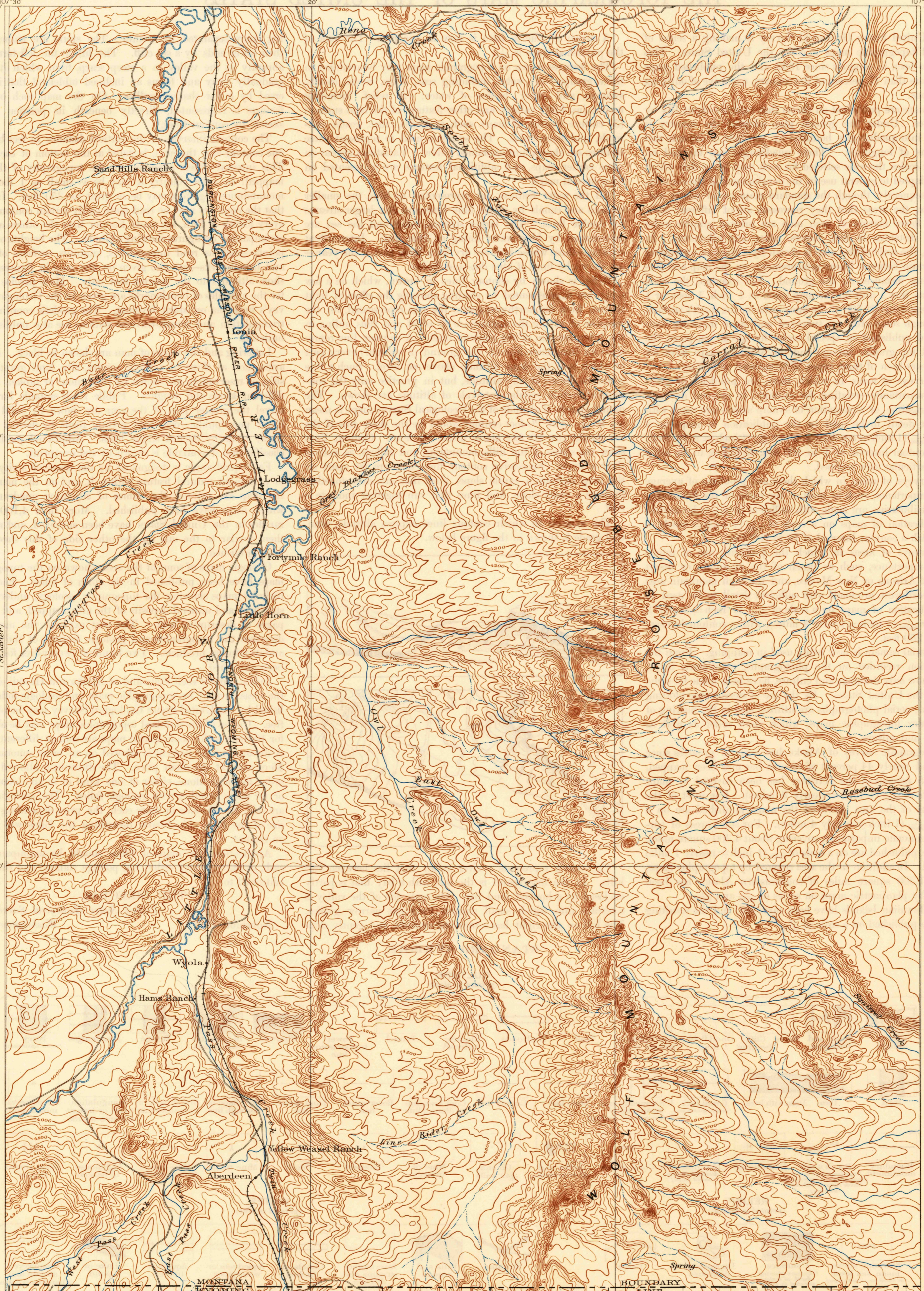


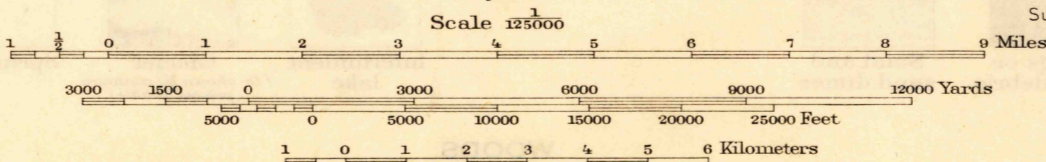
U.S.G.S.
FILE COPY
Inspection and Editing.

UNITED STATES
DEPARTMENT OF THE INTERIOR
GEOLOGICAL SURVEY

MONTANA
(ROSEBUD COUNTY)
ROSEBUD QUADRANGLE



A.H. Thompson, Geographer.
Frank Tweedy, Topographer in charge
Triangulation by Frank Tweedy.
Topography by Alex. C. Barclay.
Surveyed in 1891-92.



Contour interval 50 feet.
Datum is mean sea level.
Note - In fitting this sheet to Dayton
use blue projection corners.

Surveyed by reconnaissance methods
Edition of 1901, reprinted 1946
Polyconic projection.

U.S.G.S.
FILE COPY
Inspection and Editing.

MONT.
ROSEBUD
N4500-W10700/30

USCS
Historical File
Topographic Division

MAY 13 1946

2130