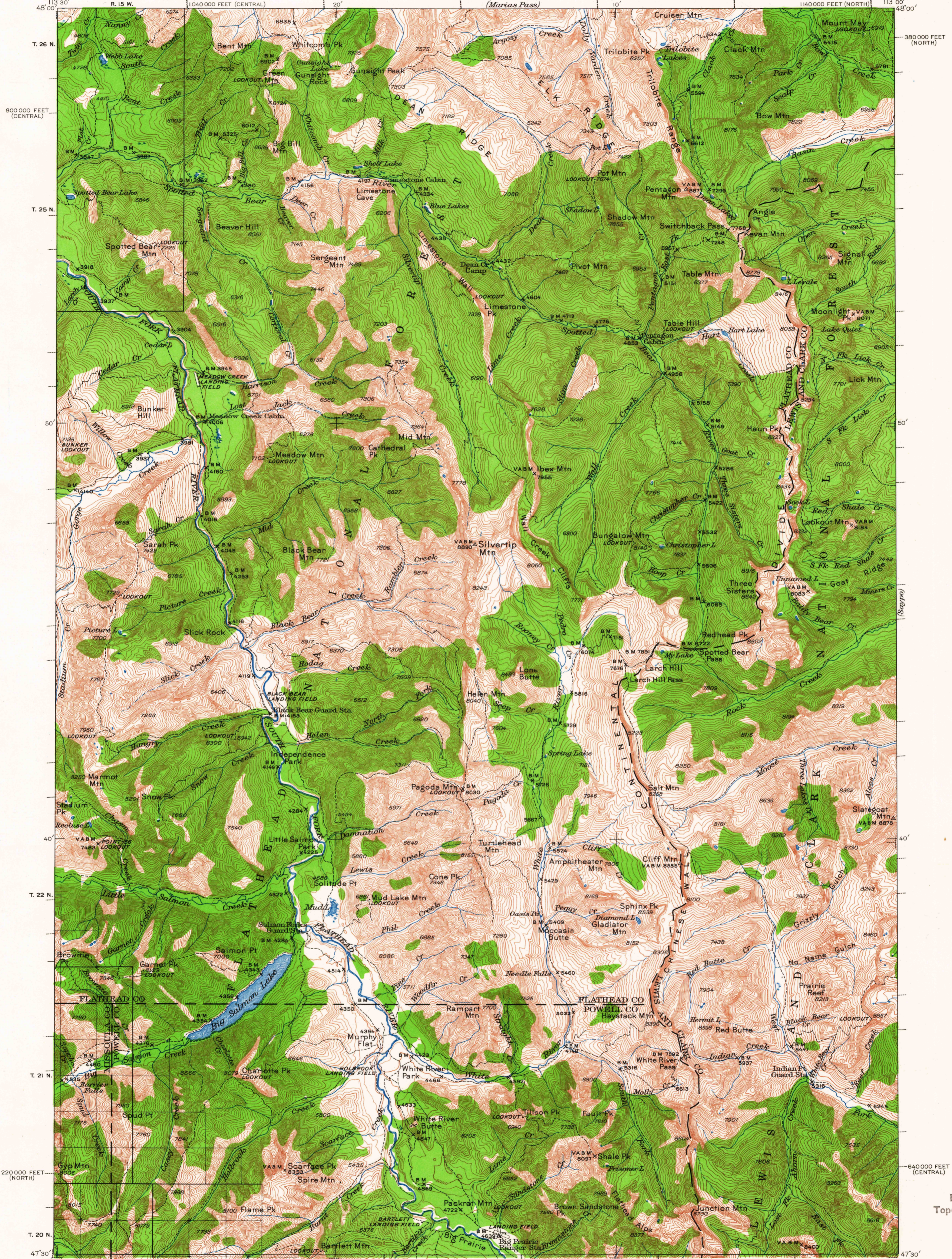


UNITED STATES
DEPARTMENT OF THE INTERIOR
GEOLOGICAL SURVEY

MONTANA
SILVERTIP QUADRANGLE
30 MINUTE SERIES
1:40,000 FEET (NORTH)



Topography by J. L. Lewis, S. C. Kain, and A. J. Bauska
Surveyed in 1936

SCALE 1:25,000

INTERIOR—GEOLOGICAL SURVEY, WASHINGTON, D. C.—1964

Polyconic projection. 1927 North American datum
20,000-foot grids based on Montana (North) and
Montana (Central) rectangular coordinate systems
To join Marias Pass, Saypo and Ovando
maps use dotted projection corners

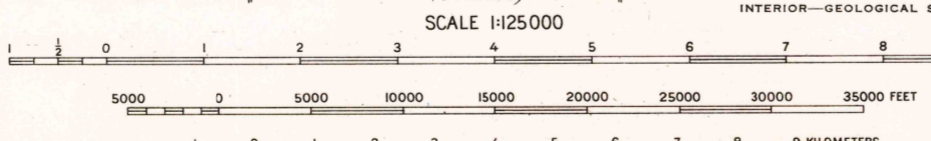


DIAGRAM OF TOWNSHIP

6	5	4	3	2	1
7	8	9	10	11	12
13	14	15	16	17	18
19	20	21	22	23	24
25	26	27	28	29	30
31	32	33	34	35	36

SILVERTIP MONT.
N 4730—W 11300/30
1936

FOR SALE BY U. S. GEOLOGICAL SURVEY, DENVER 25, COLORADO OR WASHINGTON 25, D. C.
A FOLDER DESCRIBING TOPOGRAPHIC MAPS AND SYMBOLS IS AVAILABLE ON REQUEST

USGS
Historical File
Topographic Division

FEB 19 1964

2135