

U. S. G. S.  
**FILE COPY**  
Ed. Div. Topographic Maps.

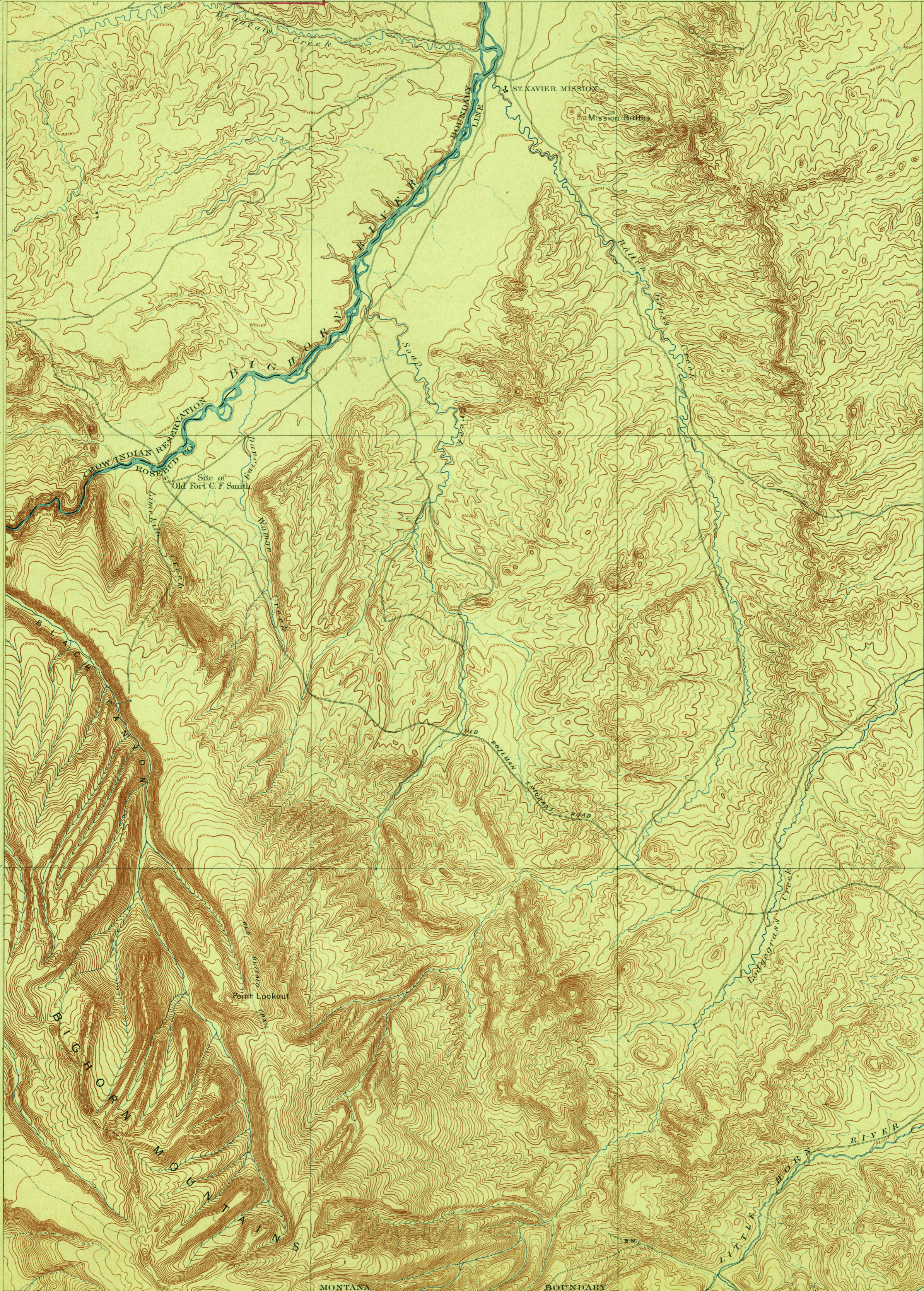
TOPOGRAPHIC SHEET

MONTANA  
ST. XAVIER QUADRANGLE

U. S. GEOLOGICAL SURVEY  
CHARLES D. WALCOTT, DIRECTOR

(Fort Custer)

(Rosebud)



A. H. Thompson, Geographer.  
Frank Tweedy, topographer in charge.  
Triangulation by Frank Tweedy.  
Topography by R. B. Marshall, P. V. S. Bartlett, and A. C. Barclay.  
Surveyed in 1891-92.

Marshall  
Barclay  
Bartlett

U. S. G. S.  
**FILE COPY**  
Ed. Div. Topographic Maps.

Scale 1:25,000  
1 2 3 4 5 Miles  
1 2 3 4 5 Kilometers  
Contour interval 50 and 100 feet.  
Datum is mean sea level.  
Note - In fitting this sheet to Bald Mountain  
projection corners.

U.S. Geological Survey,  
OCT 31 1901 2103  
Ed. Div. Topographic Maps.

St. Xavier, Mont.

USGS  
Historical File  
Topographic Division

Edition of Aug. 1901.