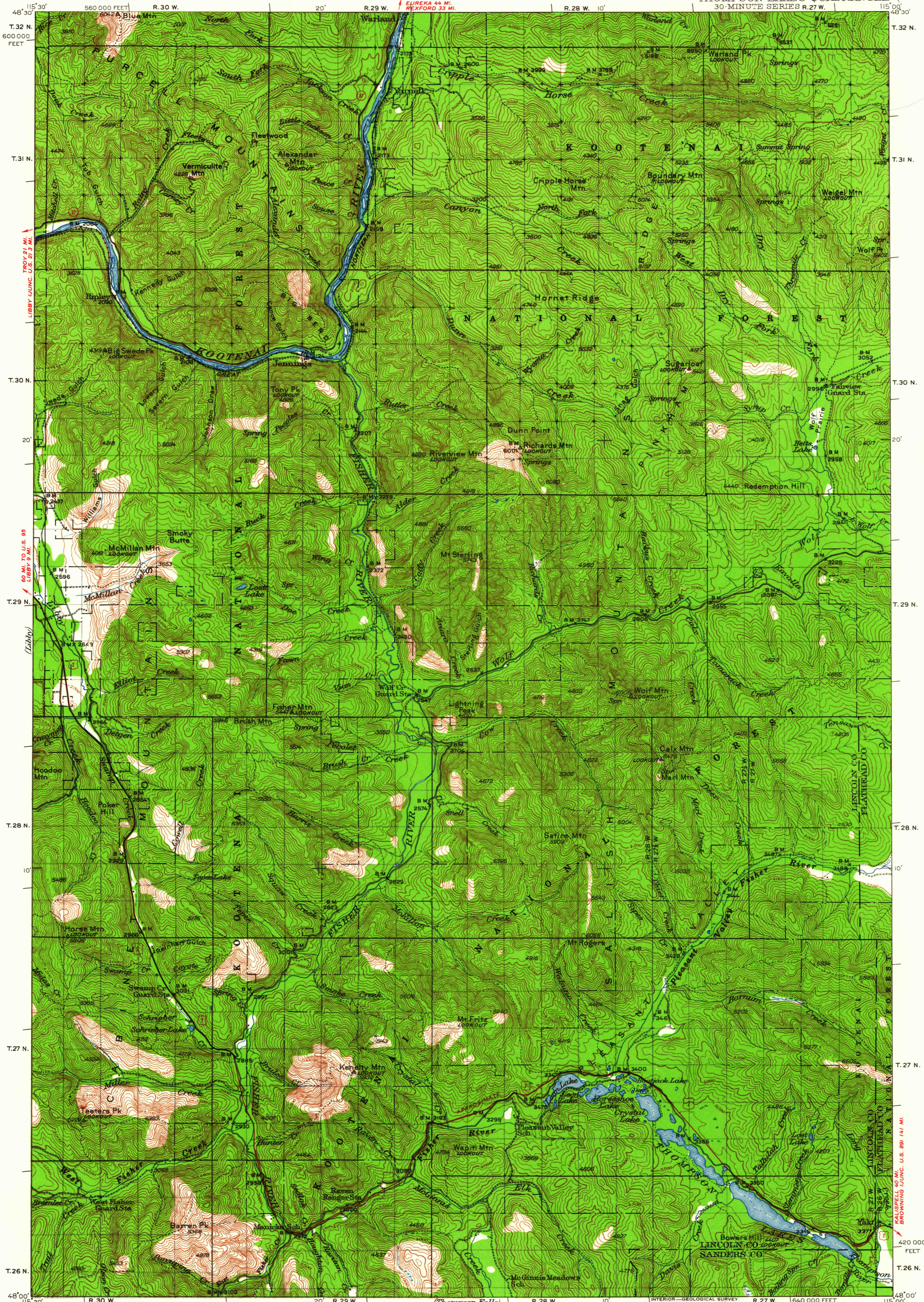


UNITED STATES
DEPARTMENT OF THE INTERIOR
GEOLOGICAL SURVEY

MONTANA
THOMPSON LAKES QUADRANGLE (STRATON)
30-MINUTE SERIES R.27 W.



Topography by J.L. Lewis, A.K. Andrews, A.J. Bauska, and U.S. Forest Service Surveyed in 1934-35

ROAD CLASSIFICATION
 Heavy-duty ——— Light-duty ———
 Medium-duty ——— Unimproved dirt ———
 U.S. Route State Route

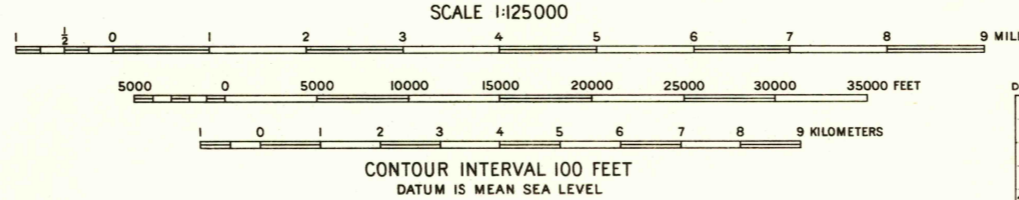
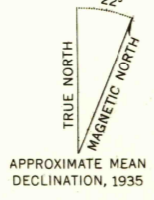


DIAGRAM OF TOWNSHIP

6	5	4	3	2	1
7	8	9	10	11	12
13	14	15	16	17	18
19	20	21	22	23	24
25	26	27	28	29	30
31	32	33	34	35	36

Polyconic projection. 1927 North American datum
 20,000-foot grid based on Montana (North)
 rectangular coordinate system

THOMPSON LAKES, MONT.
 N4800—W11500/30
 1935

USGS
Historical File
Topographic Division

U.S.G.S.
FILE COPY
TOPOGRAPHIC DIVISION

JUL 14 1961

950