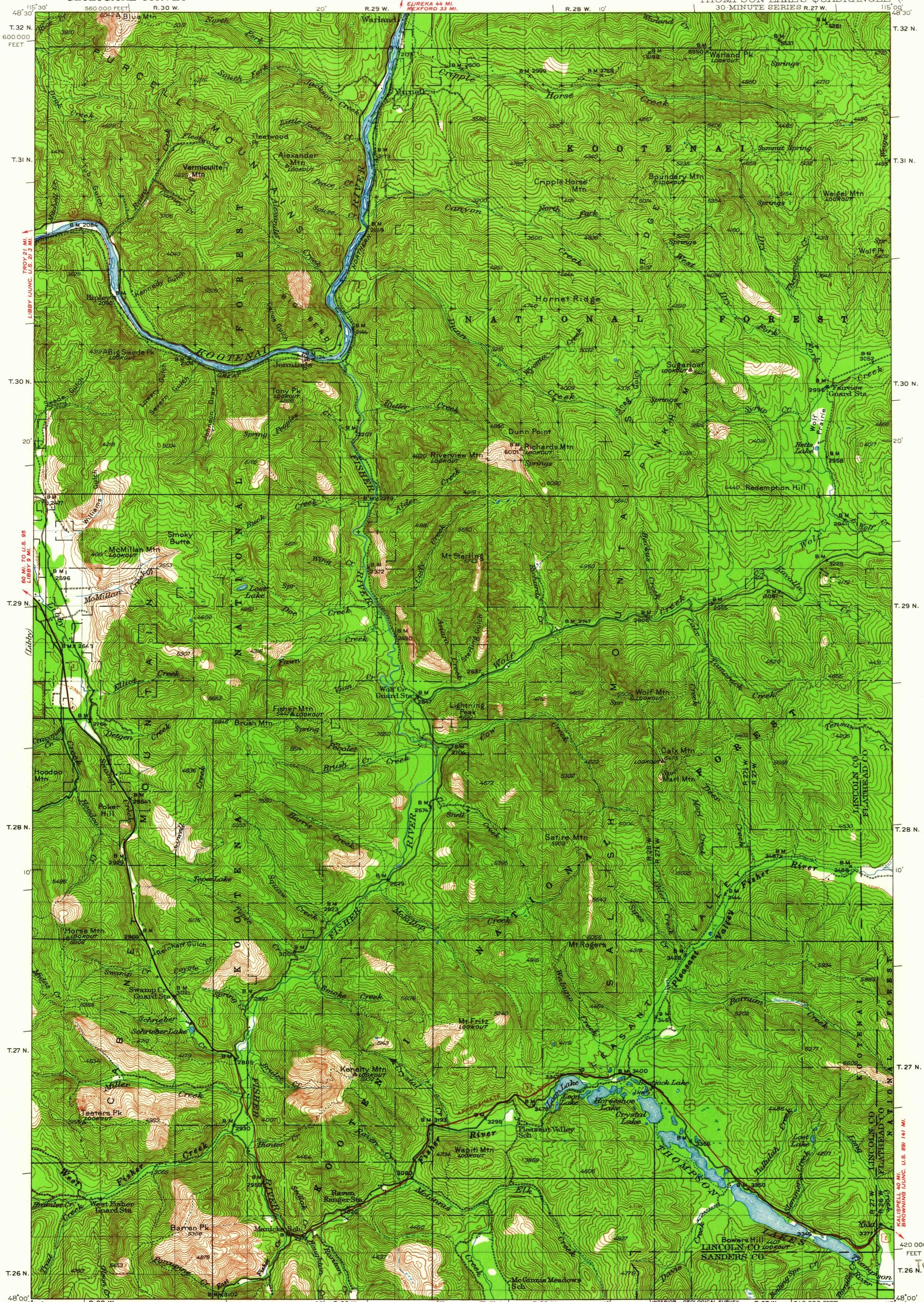


UNITED STATES
DEPARTMENT OF THE INTERIOR
GEOLOGICAL SURVEY

MONTANA
THOMPSON LAKES QUADRANGLE
30 MINUTE SERIES R.27 W. 115° 00' 48" 30"



Topography by J.L.Lewis, A.K.Andrews, A.J.Bauska, and U.S.Forest Service Surveyed in 1934-35

ROAD CLASSIFICATION
 Heavy-duty ——— Light-duty ———
 Medium-duty ——— Unimproved dirt ———
 U.S. Route State Route

TRUE NORTH
MAGNETIC NORTH
APPROXIMATE MEAN DECLINATION, 1935

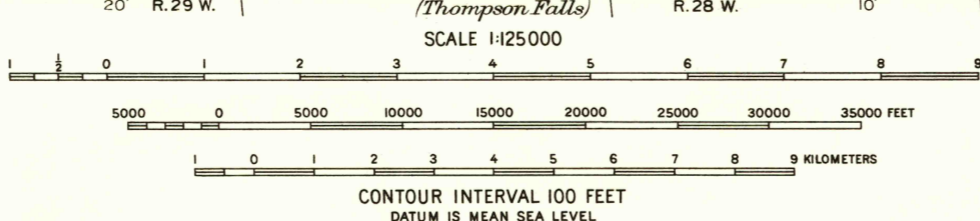


DIAGRAM OF TOWNSHIP

6	5	4	3	2	1
7	8	9	10	11	12
18	17	16	15	14	13
19	20	21	22	23	24
30	29	28	27	26	25
31	32	33	34	35	36

INTERIOR—GEOLOGICAL SURVEY, WASHINGTON, D. C.—1964
 Polyconic projection. 1927 North American datum
 20,000-foot grid based on Montana (North)
 rectangular coordinate system

THOMPSON LAKES, MONT.
 N4800—W11500/30
 1935

USGS
Historical File
Topographic Division

3085

U.S.G.S.
FILE COPY
TOPOGRAPHIC DIVISION
JUN 2 1964