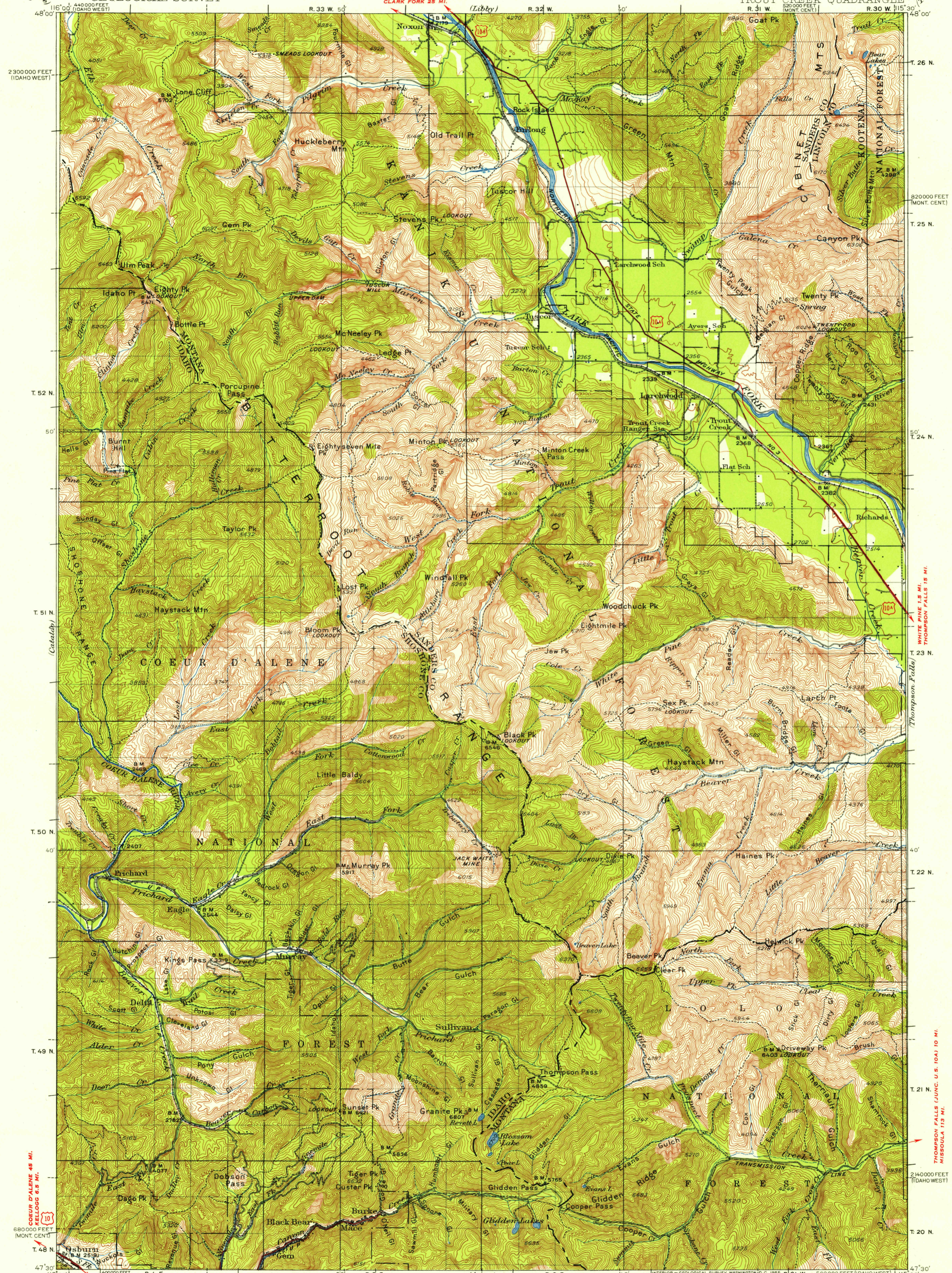


UNITED STATES
DEPARTMENT OF THE INTERIOR
GEOLOGICAL SURVEY

MONTANA-IDAHO
TROUT CREEK QUADRANGLE

U.S.G.S.
FILE COPY
TOPOGRAPHIC DIVISION



Topography by J.L. Lewis, A.K. Andrews, E.J. Con, and U.S. Forest Service, and reduced from map of Coeur d'Alene District Control by U.S. Geological Survey and U.S. Coast and Geodetic Survey. Surveyed in 1900-1901 and 1930-1932.

SCALE 1:250,000
CONTOUR INTERVAL 100 FEET
DATUM IS MEAN SEA LEVEL

INTERIOR - GEOLOGICAL SURVEY, WASHINGTON, D.C. 1955
POLYCONIC PROJECTION, 1927 NORTH AMERICAN DATUM
10000-FOOT GRID BASED ON MONTANA (CENTRAL) AND IDAHO (WEST) RECTANGULAR COORDINATE SYSTEM
TO JOIN CATALO MAP USE DOTTED PROJECTION CORNERS

ROAD CLASSIFICATION
Heavy-duty 4 LANE 6 LANE Light-duty
Medium-duty 4 LANE 6 LANE Unimproved dirt
U.S. Route State Route

FOR SALE BY U.S. GEOLOGICAL SURVEY, FEDERAL CENTER, DENVER, COLORADO OR WASHINGTON 25, D.C.
A FOLDER DESCRIBING TOPOGRAPHIC MAPS AND SYMBOLS IS AVAILABLE ON REQUEST

DIAGRAM OF TOWNSHIP
6 5 4 3 2 1
7 8 9 10 11 12
13 14 15 16 17 18
19 20 21 22 23 24
25 26 27 28 29 30
31 32 33 34 35 36

TROUT CREEK MONT-IDA.
N4730-W11530/30
1932

U.S.G.S.
FILE COPY
TOP
USGS
Historical File
Topographic Division
SEP 8 1955
5065