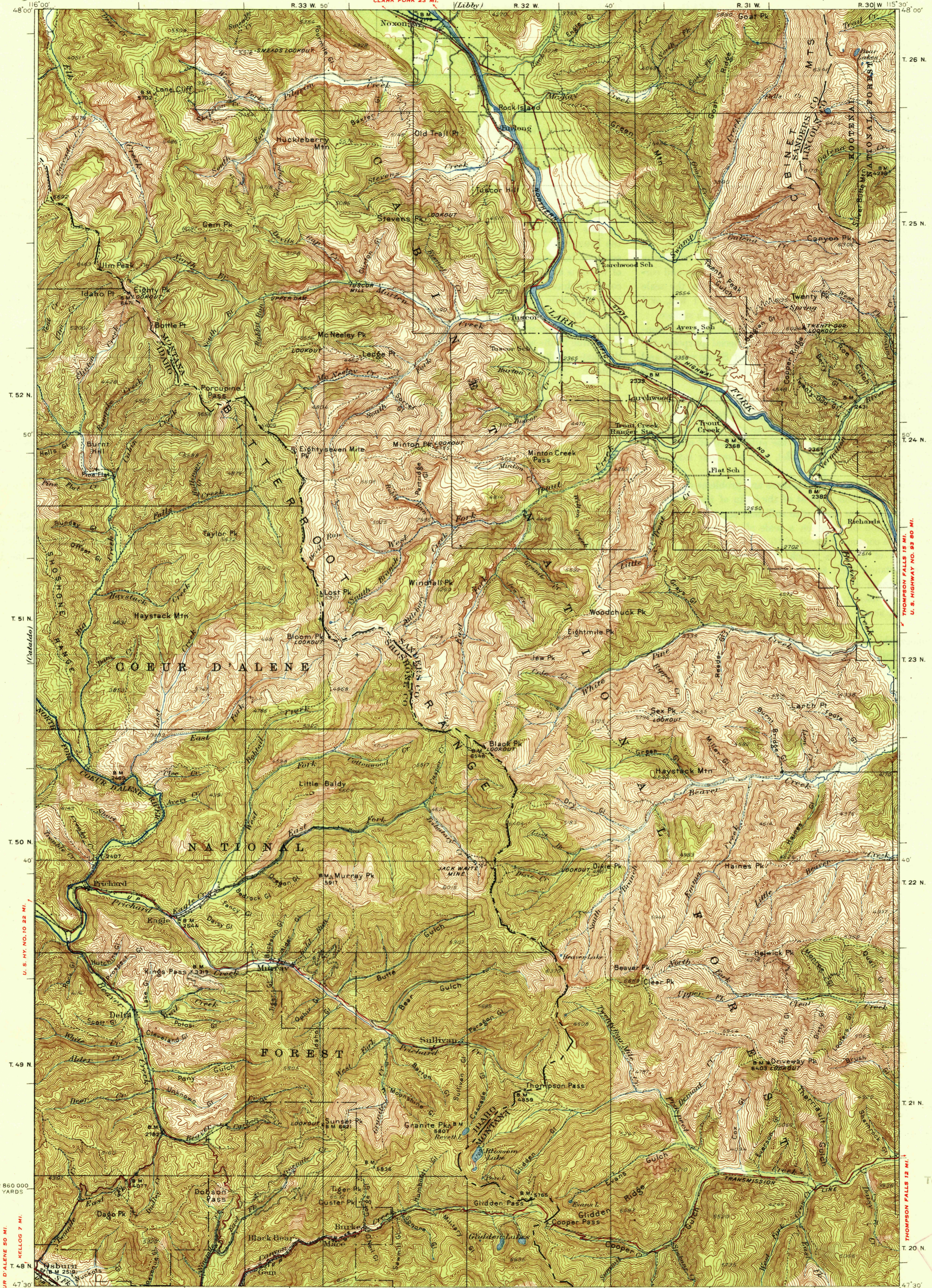


(Priest Lake)
292500

SANDPOINT 50 MI.
CLARK FORK 23 MI.



116°00'
48°00'
T. 26 N.
T. 25 N.
T. 52 N.
50'
T. 24 N.
T. 51 N.
T. 50 N.
40'
T. 22 N.
T. 49 N.
T. 21 N.
T. 48 N.
47°30'
2 860 000
YARDS
WALLACE 2 MI.
WALLACE 4 MI.
MISSOULA 140 MI.

R. 33 W. 50'
R. 32 W. 40'
R. 31 W.
R. 30 W. 115°30'
T. 26 N.
T. 25 N.
T. 24 N.
T. 23 N.
T. 22 N.
T. 21 N.
T. 20 N.
THOMPSON FALLS 12 MI.
U.S. HIGHWAY NO. 83 80 MI.

Topography by J.L. Lewis, A.K. Andrews, E.J. Coon, and U.S. Forest Service, and reduced from map of Coeur d'Alene District Control by U.S. Geological Survey and U.S. Coast and Geodetic Survey. Surveyed in 1900-1901 and 1930-1932.

WALLACE 3 MI.
WALLACE 2 MI.
WALLACE 4 MI.
MISSOULA 140 MI.

Scale 1:25000
1 1/2 0 1 2 3 4 5 Miles
1 1/2 0 1 2 3 4 5 Kilometers
Contour interval 100 feet
Datum in mean sea level

Polyconic projection, 1927 North American datum
5000 yard grid based upon U.S. zone system, F
To join Cataldo map use dotted projection corners.
1935
TROUT CREEK, MONT-IDA.
Edition of 1936
1668.06.107

USGS
Historical File
Topographic Division

FILE ONLY
1668.06.107

(2460) 2460