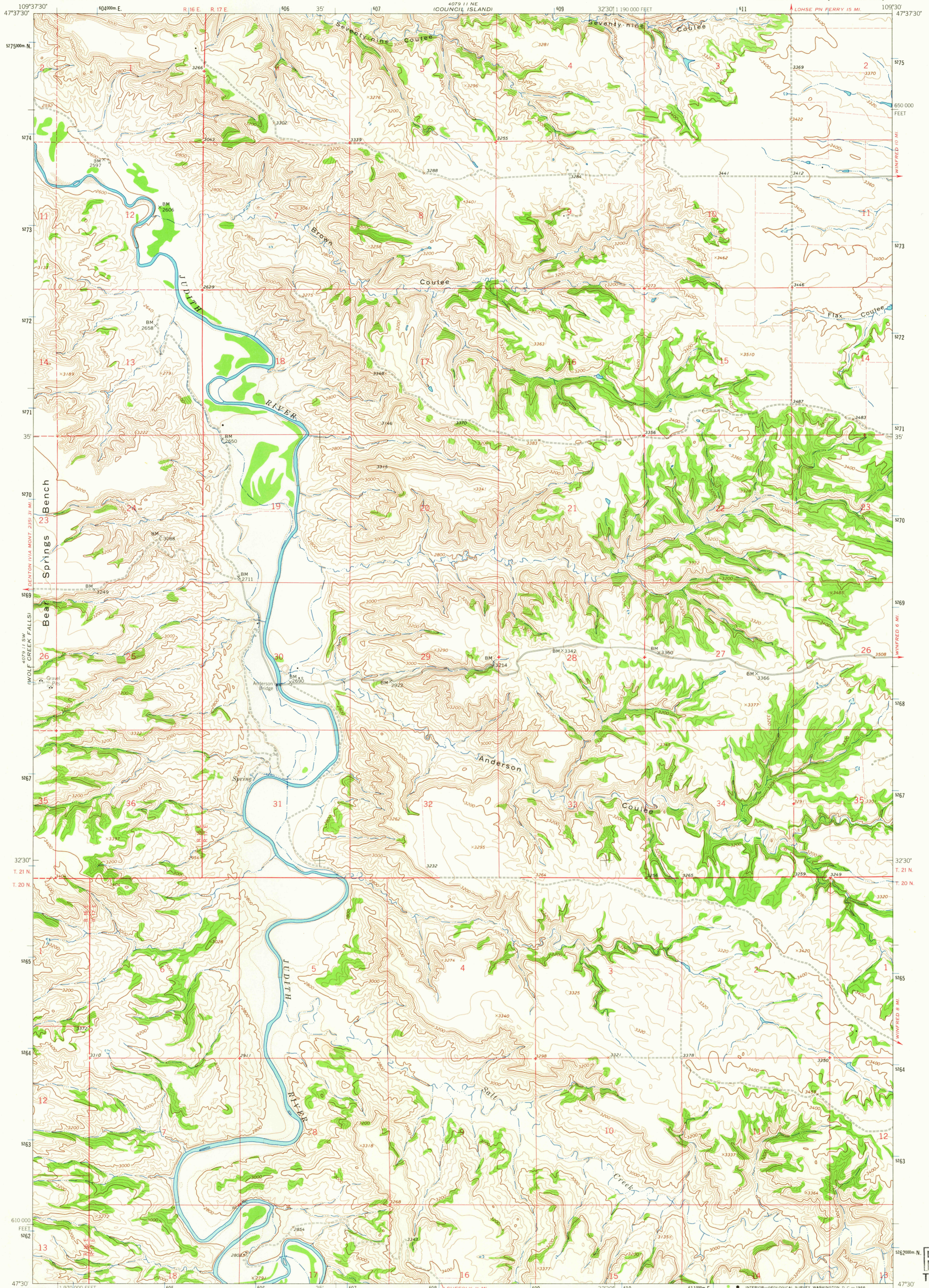


4079 11 NW
(COUNCIL ISLAND)

UNITED STATES
DEPARTMENT OF THE INTERIOR
GEOLOGICAL SURVEY

ANDERSON BRIDGE QUADRANGLE
MONTANA-FERGUS CO.
7.5 MINUTE SERIES (TOPOGRAPHIC)

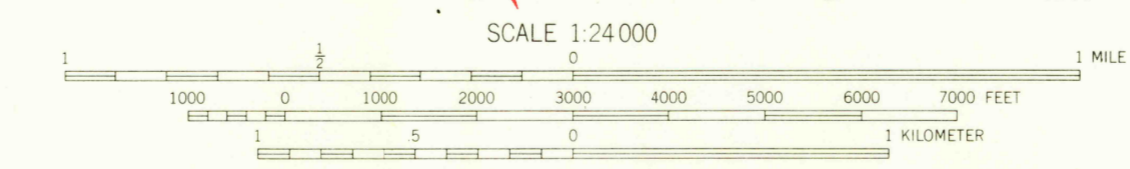
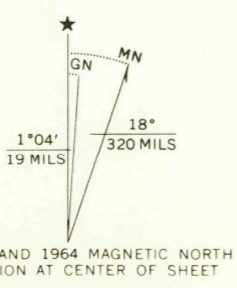
479 11 NW
IBALATIN RAPIDS



Mapped, edited, and published by the Geological Survey as part of the Department of the Interior program for the development of the Missouri River Basin. Control by USGS and USC&GS.

Topography by photogrammetric methods from aerial photographs taken 1963. Field checked 1964. Polyconic projection. 1927 North American datum. 10,000-foot grid based on Montana coordinate system, central zone 1000-meter Universal Transverse Mercator grid ticks, zone 12, shown in blue.

Fine red dashed lines indicate selected fence lines.



CONTOUR INTERVAL 40 FEET
DOTTED LINES REPRESENT 20 FOOT CONTOURS
DATUM IS MEAN SEA LEVEL



QUADRANGLE LOCATION

ROAD CLASSIFICATION
Light-duty ——— Unimproved dirt - - - - -

ANDERSON BRIDGE, MONT.
N4730-W10930/7.5
1964

AMS 4079 11 SE-SERIES V894

U.S.G.S.
FILE COPY
TOPOGRAPHIC DIVISION

USGS
Historical File
Topographic Division

2635
JUN 24 1965

THIS MAP COMPLIES WITH NATIONAL MAP ACCURACY STANDARDS
FOR SALE BY U.S. GEOLOGICAL SURVEY, DENVER, COLORADO 80225, OR WASHINGTON, D. C. 20242
A FOLDER DESCRIBING TOPOGRAPHIC MAPS AND SYMBOLS IS AVAILABLE ON REQUEST