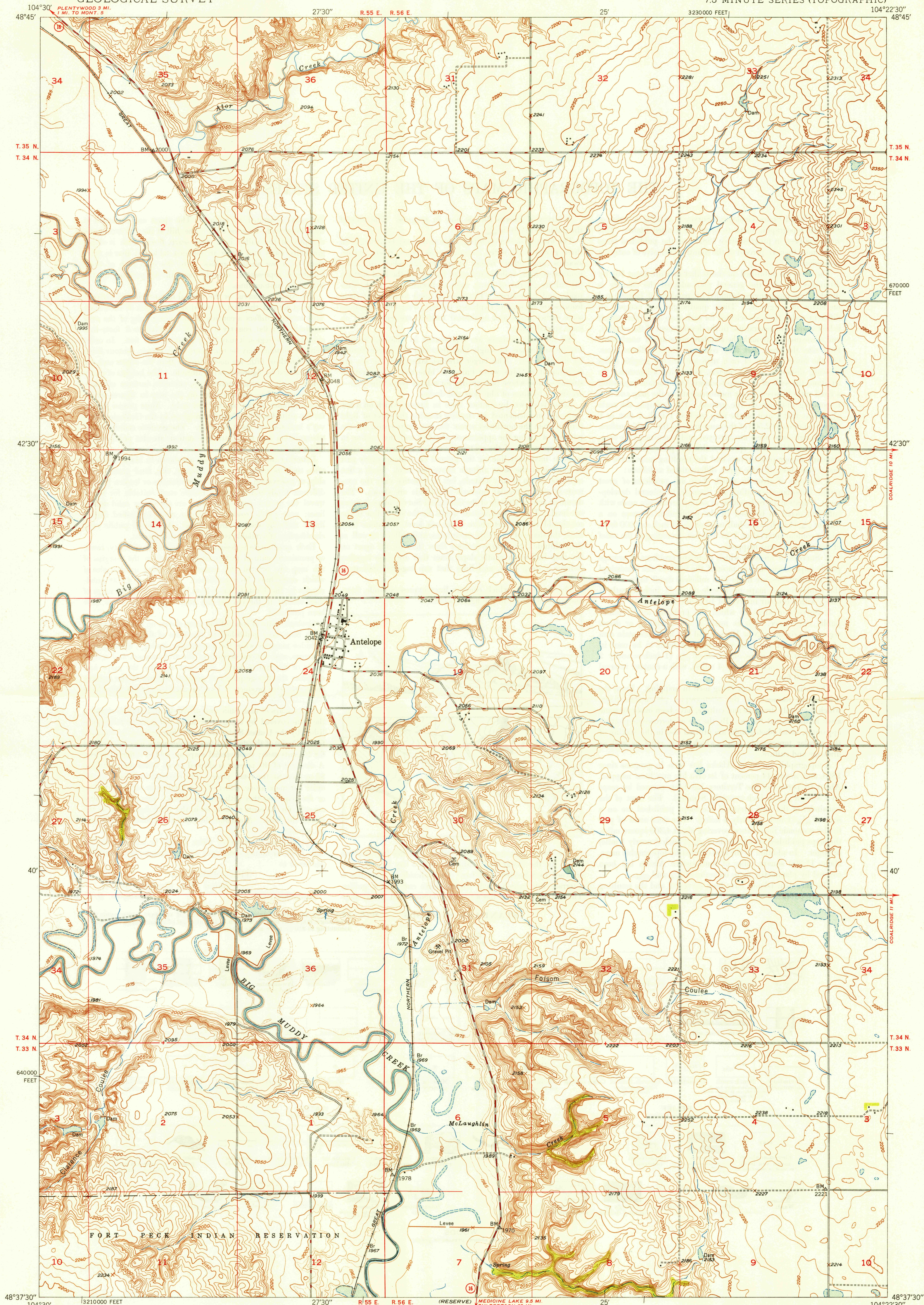
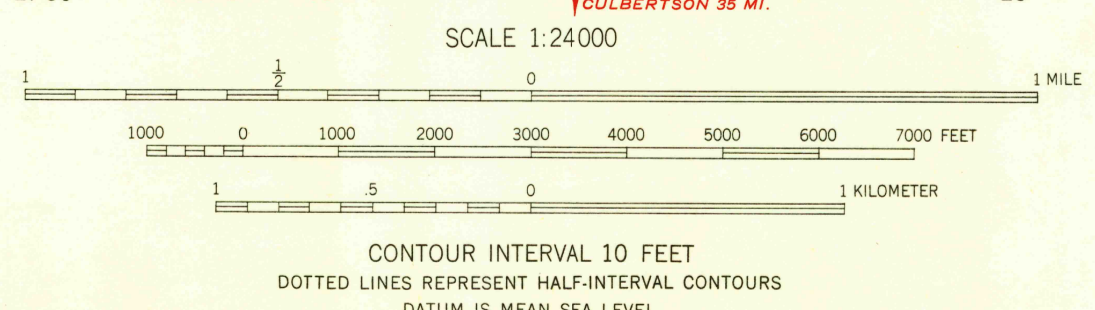
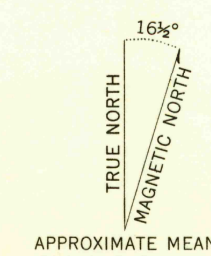


U. S. G. S.
FILE COPY
Inspection and Editing

U. S. G. S.
FILE COPY
Inspection and Editing



Maped, edited, and published by the Geological Survey as part of the Department of the Interior program for the development of the Missouri River Basin Control by USGS and USC&GS
Culture and drainage in part compiled from aerial photographs taken July 1946
Topography by plane-table methods 1947-1948
Polyconic projection. 1927 North American datum
10,000-foot grid based on Montana coordinate system, north zone



THIS MAP COMPLIES WITH NATIONAL MAP ACCURACY STANDARDS
FOR SALE BY U. S. GEOLOGICAL SURVEY, WASHINGTON 25, D. C.

ROAD CLASSIFICATION
HARD-SURFACE ALL WEATHER ROADS DRY WEATHER ROADS
Heavy-duty... 4 LANE LANE Improved dirt...
Medium-duty... 4 LANE LANE Unimproved dirt...
Loose-surface, graded, or narrow hard-surface...
U. S. Route State Route

ANTELOPE, MONT.
N4837.5-W10422.5/7.5
EDITION OF 1949

USGS
Historical File
Topographic Division

U. S. G. S.
FILE COPY
Inspection and Editing

AUG 15 1949 2075