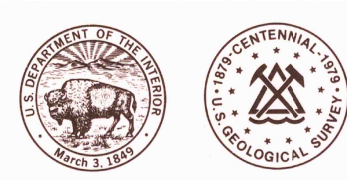
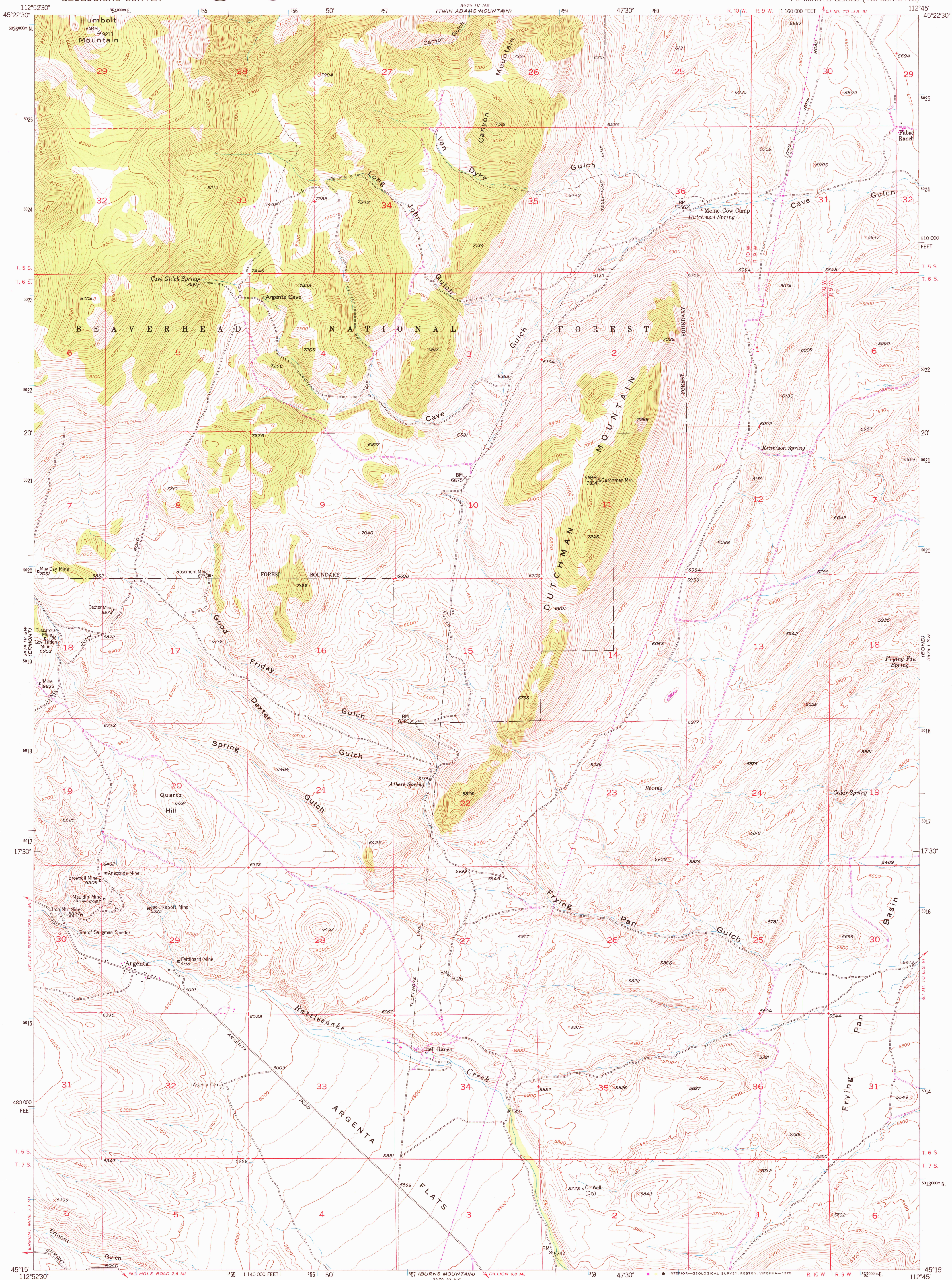


UNITED STATES
DEPARTMENT OF THE INTERIOR
GEOLOGICAL SURVEY



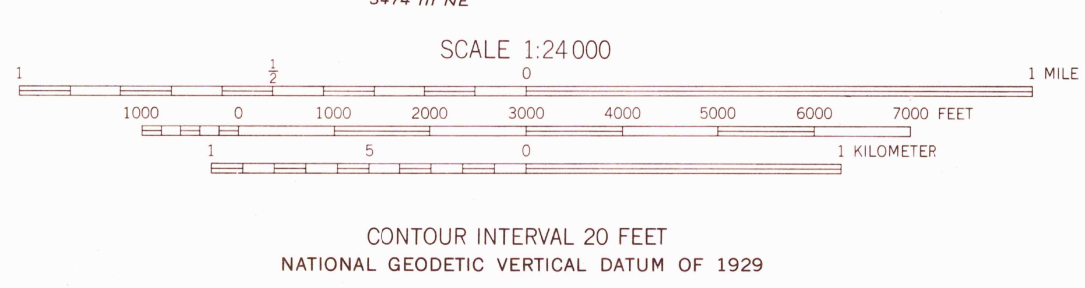
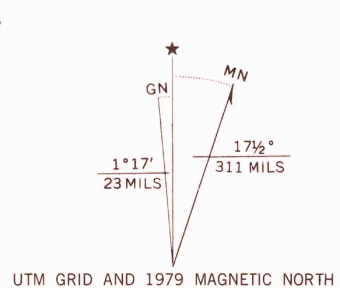
ARGENTA QUADRANGLE
MONTANA-BEAVERHEAD CO.
7.5 MINUTE SERIES (TOPOGRAPHIC)



Mapped, edited, and published by the Geological Survey

Control by USGS and USC&GS
Topography from aerial photographs by multiple methods
Aerial photographs taken 1950. Field check 1952
Polyconic projection. 1927 North American datum
10,000-foot grid based on Montana coordinate system,
south zone

All mining features are inactive unless otherwise indicated
Dashed land lines indicate approximate locations
1000-meter Universal Transverse Mercator grid ticks,
zone 12, shown in blue
There may be private inholdings within the boundaries of
the National or State reservations shown on this map



CONTOUR INTERVAL 20 FEET
NATIONAL GEODETIC VERTICAL DATUM OF 1929
THIS MAP COMPLIES WITH NATIONAL MAP ACCURACY STANDARDS
FOR SALE BY U. S. GEOLOGICAL SURVEY, DENVER, COLORADO 80225, OR RESTON, VIRGINIA 22092
A FOLDER DESCRIBING TOPOGRAPHIC MAPS AND SYMBOLS IS AVAILABLE ON REQUEST

ROAD CLASSIFICATION

Heavy-duty	4 LANE 16 LANE	Light-duty
Medium-duty	4 LANE 16 LANE	Unimproved dirt

U.S. Route State Route

USGS
Historical File
Topographic Division

QUADRANGLE LOCATION

MONTANA

ARGENTA, MONT.
N4515-W11245/7.5

1952
PHOTOREVISED 1979
AMS 3474 IV SE-SERIES V394

FEB 13 1990

995