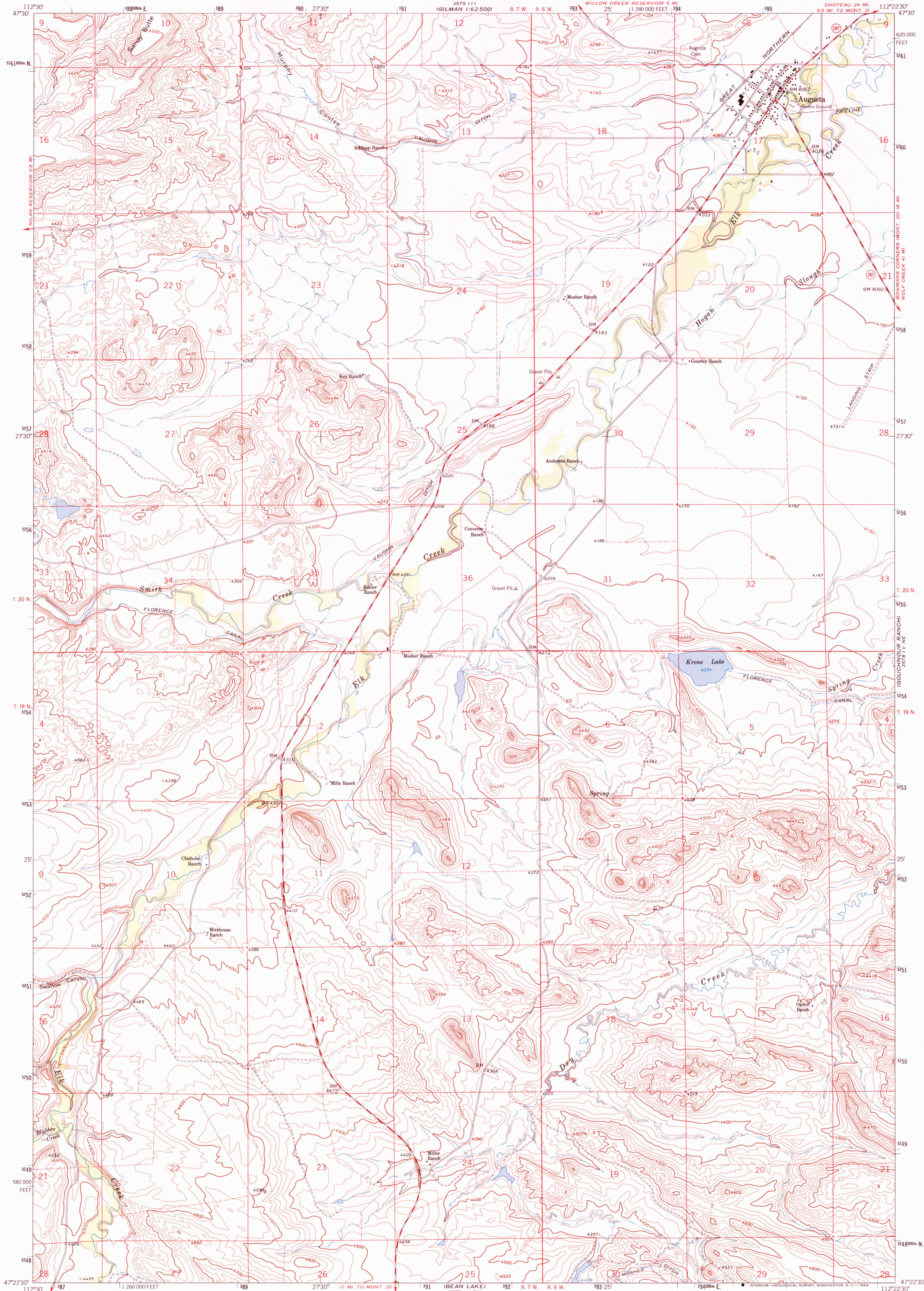


UNITED STATES
DEPARTMENT OF THE INTERIOR
GEOLOGICAL SURVEY

AUGUSTA QUADRANGLE
MONTANA-LEWIS AND CLARK CO.
7.5 MINUTE SERIES (TOPOGRAPHIC)

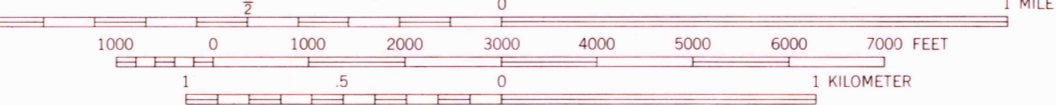
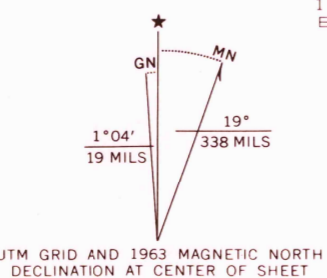


112°30' 1260000 E. 189 27°30' 191 3578 111 (GILMAN 1:62500) R. 7 W. R. 6 W. 193 112°22'30" 11222300 W. 112°22'30" 11222300

Control by USGS and USC&GS
Topography by photogrammetric methods from aerial photographs taken 1961. Field checked 1963.

Polycyclic projection. 1927 North American datum
10 000 foot grid based on Montana coordinate system, central zone
1000 meter Universal Transverse Mercator grid ticks,
zone 12, shown in blue.

Fine red dashed lines indicate selected fence lines



SCALE 1:24 000
CONTOUR INTERVAL 20 FEET
DOTTED LINES REPRESENT 10 FOOT CONTOURS
DATUM IS MEAN SEA LEVEL



ROAD CLASSIFICATION
Medium-duty ——— Light-duty ———
Unimproved dirt ———
○ State Route

THIS MAP COMPLIES WITH NATIONAL MAP ACCURACY STANDARDS
FOR SALE BY U.S. GEOLOGICAL SURVEY
DENVER, COLORADO 80225, OR RESTON, VIRGINIA 22092
A FOLDER DESCRIBING TOPOGRAPHIC MAPS AND SYMBOLS IS AVAILABLE ON REQUEST

AUGUSTA, MONT.
N4722 5-W11222 5/7 5
1963

AMS 3578 IV NW-SERIES V894

