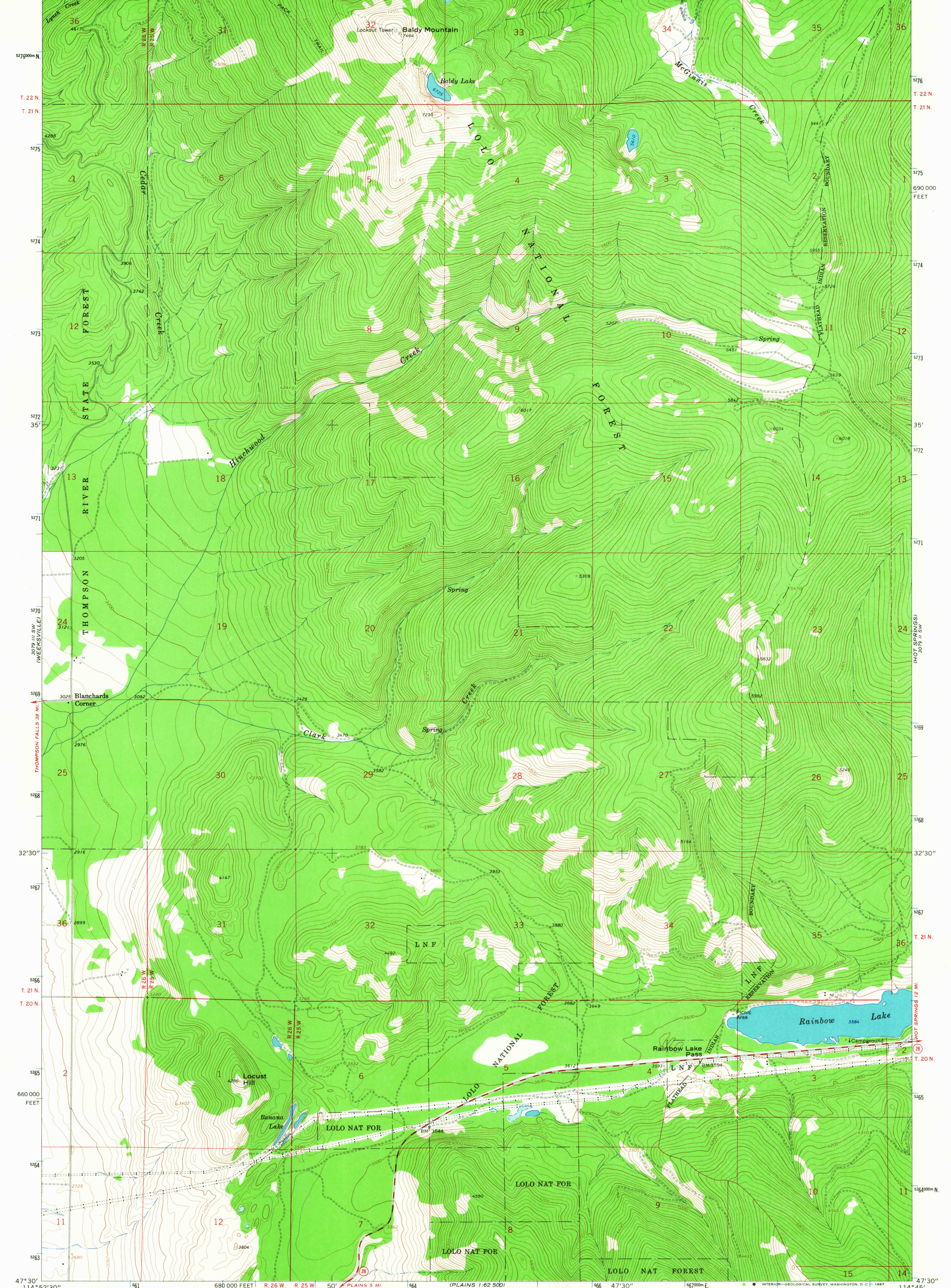


114°52'30" 1600000 E CORONA LAKE R. 1 MI. 50' 163 3079 III NE (CONEY PEAK) 165 47°30' 167 700 000 FEET 168 114°45' 47°37'30"



Mapped, edited, and published by the Geological Survey

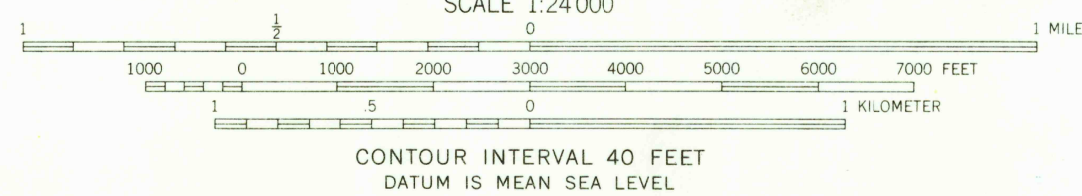
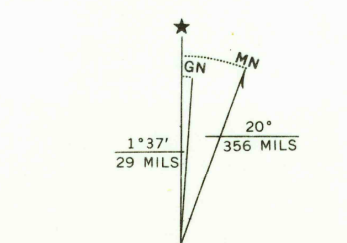
Control by USGS and USC&GS

Topography by photogrammetric methods from aerial photographs taken 1964. Field checked 1964

Polyconic projection. 1927 North American datum 10,000-foot grid based on Montana coordinate system, central zone

1000-meter Universal Transverse Mercator grid ticks, zone 11, shown in blue

Fine red dashed lines indicate selected fence lines



CONTOUR INTERVAL 40 FEET
DATUM IS MEAN SEA LEVEL

THIS MAP COMPLIES WITH NATIONAL MAP ACCURACY STANDARDS
FOR SALE BY U.S. GEOLOGICAL SURVEY, DENVER, COLORADO 80225, OR WASHINGTON, D.C. 20242
A FOLDER DESCRIBING TOPOGRAPHIC MAPS AND SYMBOLS IS AVAILABLE ON REQUEST

ROAD CLASSIFICATION

Medium-duty ——— Light-duty ———

Unimproved dirt - - - - -

State Route ○

U.S.G.S.
TOPOGRAPHIC DIVISION

BALDY LAKE, MONT.
N4730—W11445/7.5

1964

AMS 3079 III SE—SERIES V894

USGS
Historical File
Topographic Division

3295
MAY 1 1967