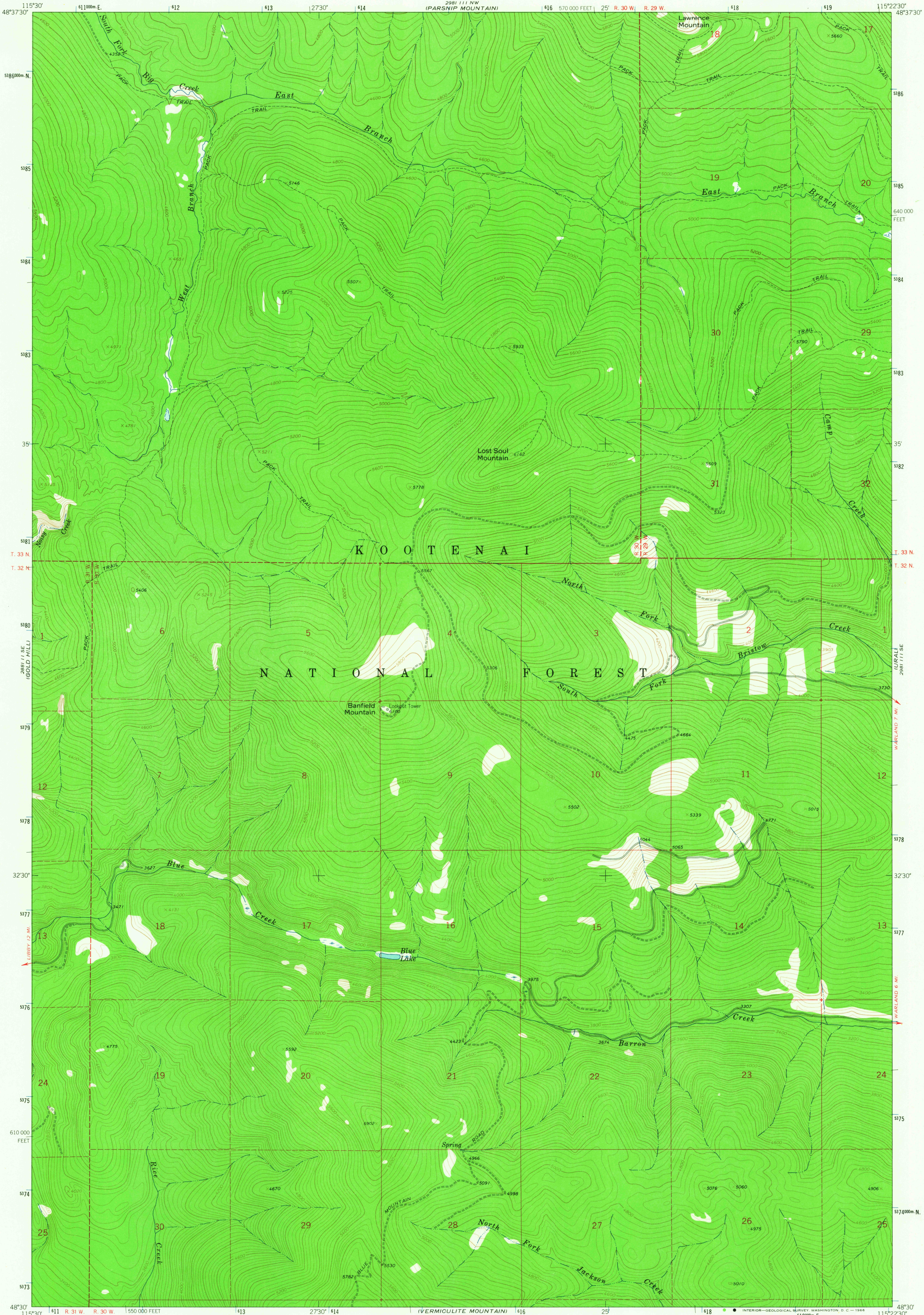


UNITED STATES
DEPARTMENT OF THE INTERIOR
GEOLOGICAL SURVEY

BANFIELD MOUNTAIN QUADRANGLE
MONTANA-LINCOLN CO.
7.5 MINUTE SERIES (TOPOGRAPHIC)



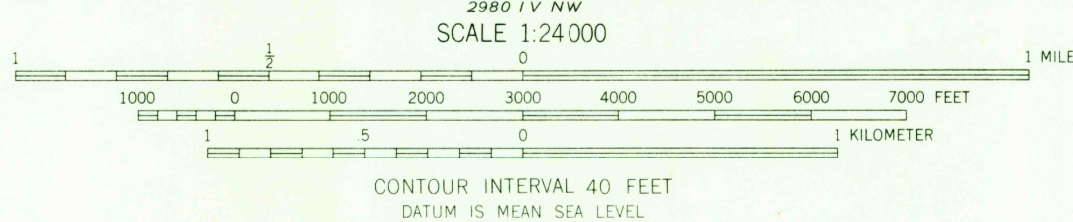
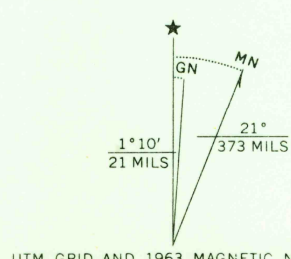
Mapped, edited, and published by the Geological Survey

Control by USGS and USC&GS

Topography by photogrammetric methods from aerial photographs taken 1962 and 1963. Field checked 1963

Polycyclic projection. 1927 North American datum. 10,000-foot grid based on Montana coordinate system, north zone. 1000-meter Universal Transverse Mercator grid ticks, zone 11, shown in blue.

Where omitted, land lines have not been established



ROAD CLASSIFICATION
Light-duty ————— Unimproved dirt —————

BANFIELD MOUNTAIN, MONT.
N4830-W11522.5/7.5

1963

AMS 2981 III SW-SERIES V894

USGS
Historical File
Topographic Division

U.S.G.S.
FILE COPY
TOPOGRAPHIC DIVISION

2510

AUG 9 1966