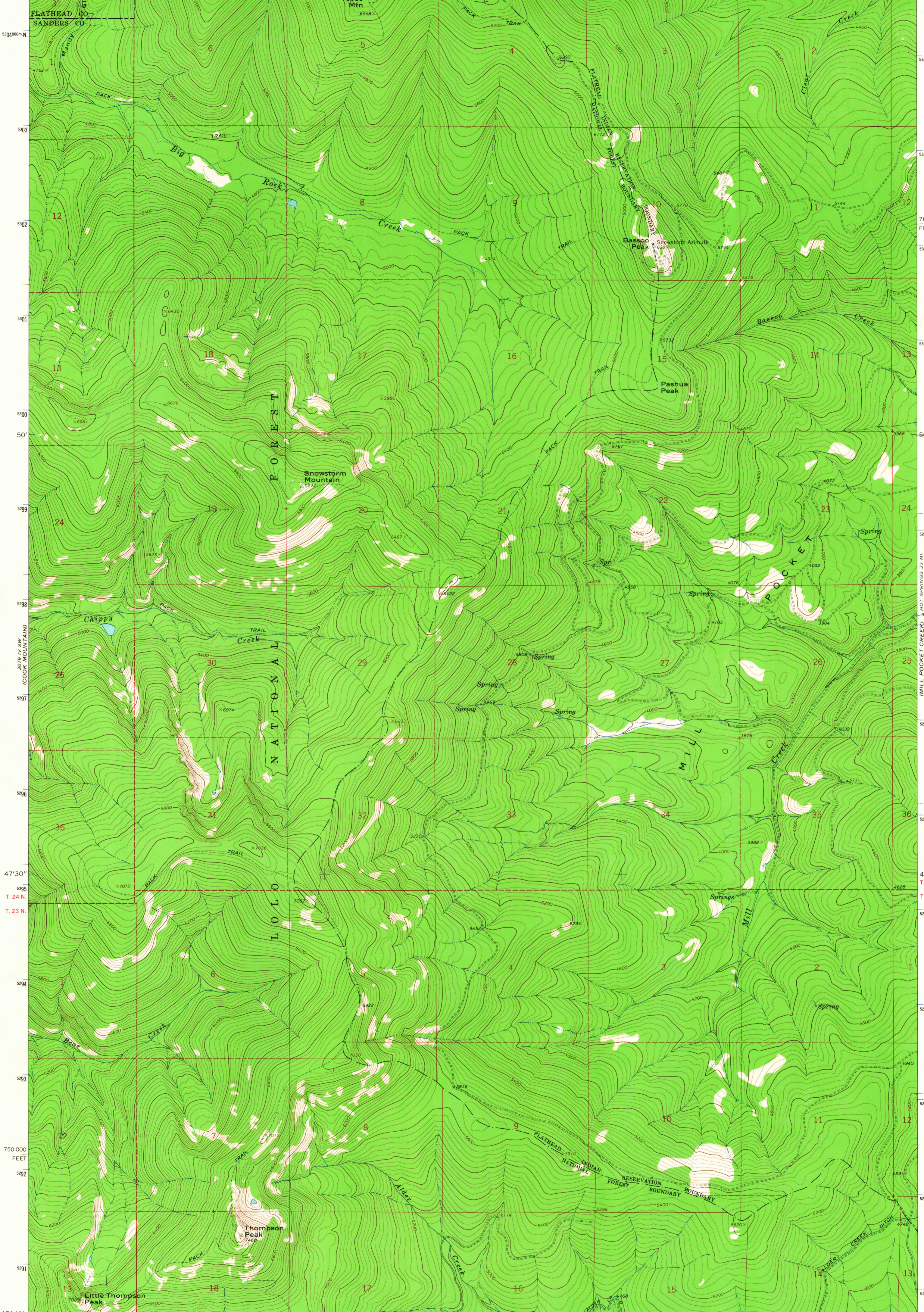


114° 52' 30" R. 26 W. R. 25 W. 161000m E. 50' 5079 IV NE (MURR PEAK) 163 164 165 166 167 171000 FEET 114° 45' 47° 52' 30"



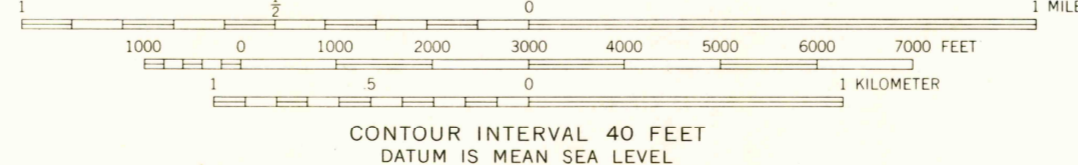
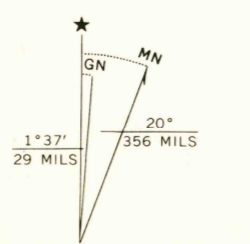
Mapped, edited, and published by the Geological Survey

Control by USGS and USC&GS

Topography by photogrammetric methods from aerial photographs taken 1964. Field checked 1964

Polyconic projection. 1927 North American datum 10,000-foot grid based on Montana coordinate system, central zone

1000-meter Universal Transverse Mercator grid ticks, zone 11, shown in blue



CONTOUR INTERVAL 40 FEET
DATUM IS MEAN SEA LEVEL

ROAD CLASSIFICATION

Light-duty ————— Unimproved dirt - - - - -

U.S.G.S.
FILE COPY
TOPOGRAPHIC DIVISION

BASSOO PEAK, MONT.
N4745-W11445/7.5

1964

AMS 3079 IV SE SERIES V894

USGS
Historical File
Topographic Division

3 745
SEP 1 1967

THIS MAP COMPLIES WITH NATIONAL MAP ACCURACY STANDARDS
FOR SALE BY U. S. GEOLOGICAL SURVEY, DENVER, COLORADO 80225, OR WASHINGTON, D. C. 20242
A FOLDER DESCRIBING TOPOGRAPHIC MAPS AND SYMBOLS IS AVAILABLE ON REQUEST