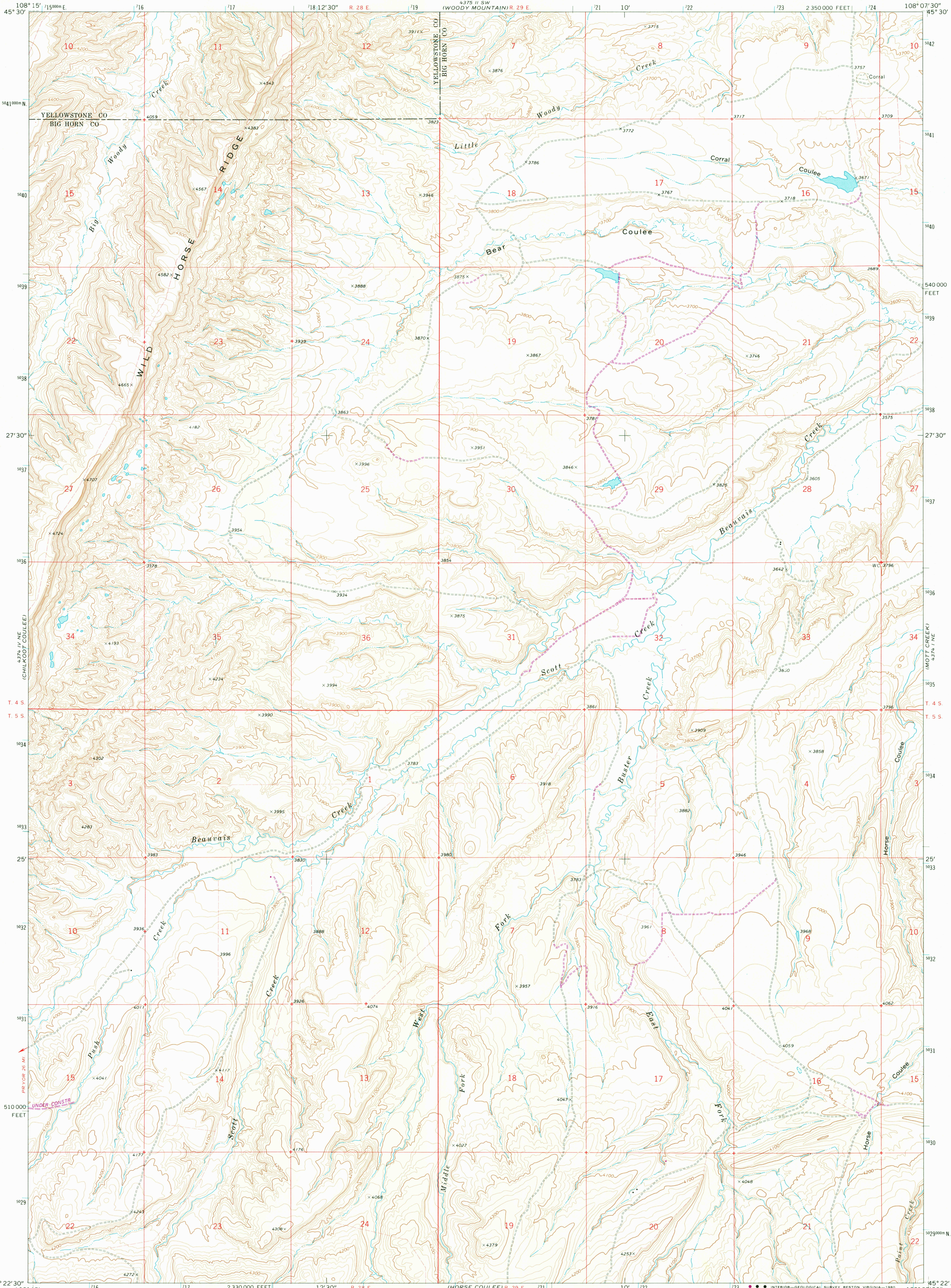
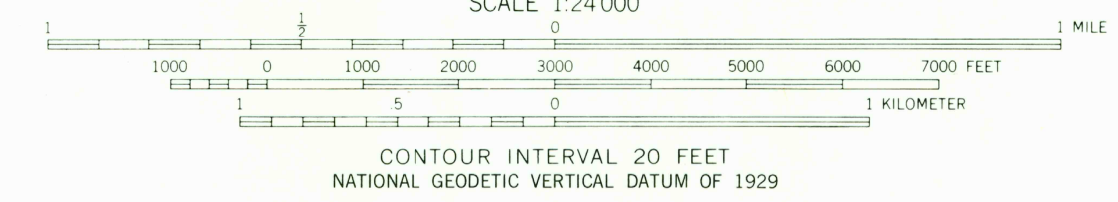
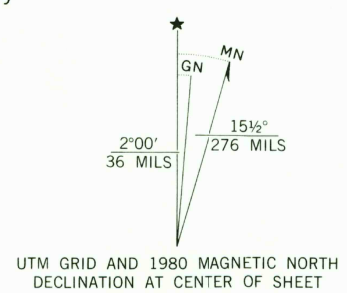


UNITED STATES  
DEPARTMENT OF THE INTERIOR  
GEOLOGICAL SURVEY

BEAR COULEE QUADRANGLE  
MONTANA  
7.5 MINUTE SERIES (TOPOGRAPHIC)



Mapped, edited, and published by the Geological Survey as part of the Department of the Interior program for the development of the Missouri River Basin Control by USGS and USC&GS  
Topography by photogrammetric methods from aerial photographs taken 1968. Field checked 1968  
Polyconic projection. 1927 North American datum. 10,000-foot grid based on Montana coordinate system, south zone  
1000-meter Universal Transverse Mercator grid ticks, zone 12, shown in blue  
To place on the predicted North American Datum 1983 move the projection lines 8 meters north and 53 meters east as shown by dashed corner ticks  
Entire area lies within the Crow Indian Reservation



**ROAD CLASSIFICATION**  
 Primary highway, hard surface ——— Light-duty road, hard or improved surface ———  
 Secondary highway, hard surface ——— Unimproved road ———  
 Interstate Route ——— U. S. Route ——— State Route ———

THIS MAP COMPLIES WITH NATIONAL MAP ACCURACY STANDARDS  
 FOR SALE BY U.S. GEOLOGICAL SURVEY, DENVER, COLORADO 80225, OR RESTON, VIRGINIA 22092  
 A FOLDER DESCRIBING TOPOGRAPHIC MAPS AND SYMBOLS IS AVAILABLE ON REQUEST

Revisions shown in purple compiled from aerial photographs taken 1978. Map edited 1980  
 This information not field checked

USGS  
 Historical File  
 Topographic Division  
**BEAR COULEE, MONT.**  
 N4522.5-W10807.5/7.5  
 1968  
 PHOTOREVISED 1980  
 DMA 4574 1 N—SERIES V894

OCT 29 1980

1960