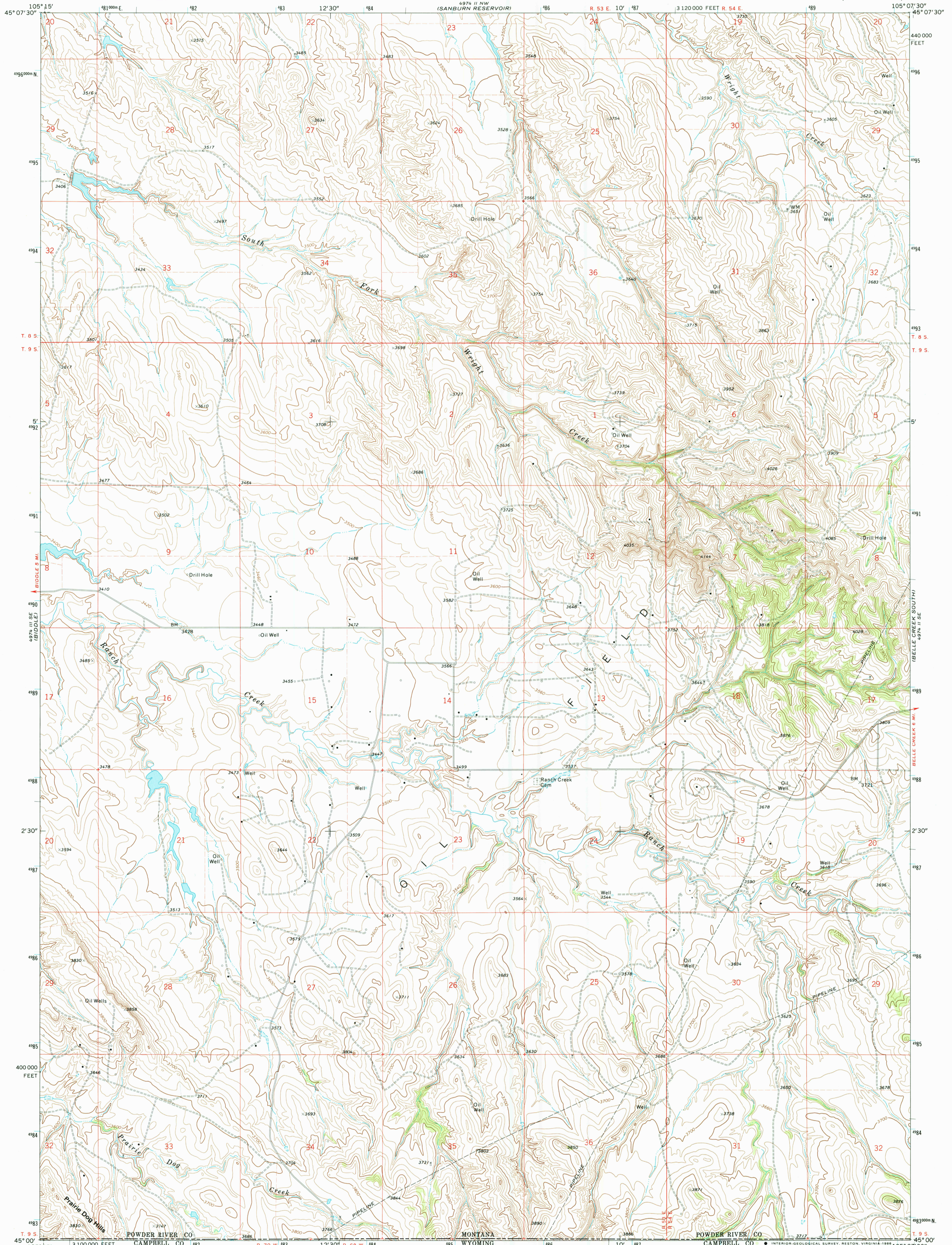
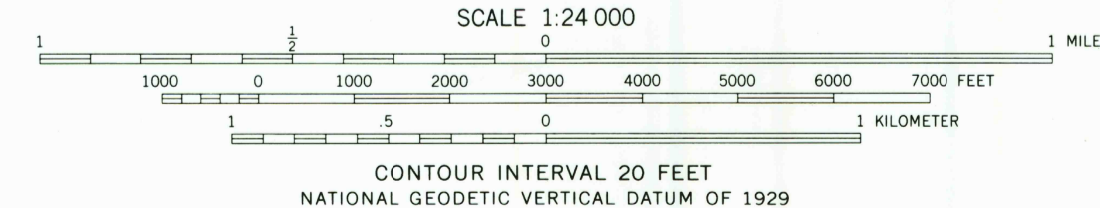
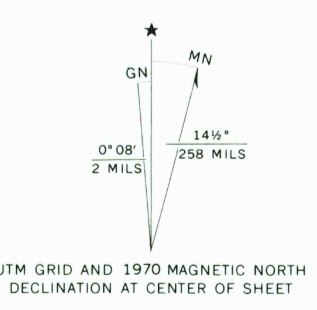


UNITED STATES  
DEPARTMENT OF THE INTERIOR  
GEOLOGICAL SURVEY

BELLE CREEK SW QUADRANGLE  
MONTANA-WYOMING  
7.5 MINUTE SERIES (TOPOGRAPHIC)



Mapped, edited, and published by the Geological Survey  
Control by USGS and USC&GS  
Topography by photogrammetric methods from aerial photographs taken 1969. Field checked 1970  
Polyconic projection. 1927 North American Datum  
10,000-foot grid based on Montana coordinate system, south zone  
1000-meter Universal Transverse Mercator grid ticks, zone 13, shown in blue  
Fine red dashed lines indicate selected fence lines  
To place on the predicted North American Datum 1983 move the projection lines 6 meters north and 44 meters east as shown by dashed corner ticks



**ROAD CLASSIFICATION**  
 Primary highway, hard surface  
 Secondary highway, hard surface  
 Light-duty road, hard or improved surface  
 Unimproved road  
 Interstate Route  
 U. S. Route  
 State Route

THIS MAP COMPLIES WITH NATIONAL MAP ACCURACY STANDARDS  
 FOR SALE BY U. S. GEOLOGICAL SURVEY, DENVER, COLORADO 80225, OR RESTON, VIRGINIA 22092  
 A FOLDER DESCRIBING TOPOGRAPHIC MAPS AND SYMBOLS IS AVAILABLE ON REQUEST

BELLE CREEK SW, MONT.-WYO.  
 45105-A2-TF-024  
 1970  
 DMA 4974 II SW-SERIES V894

