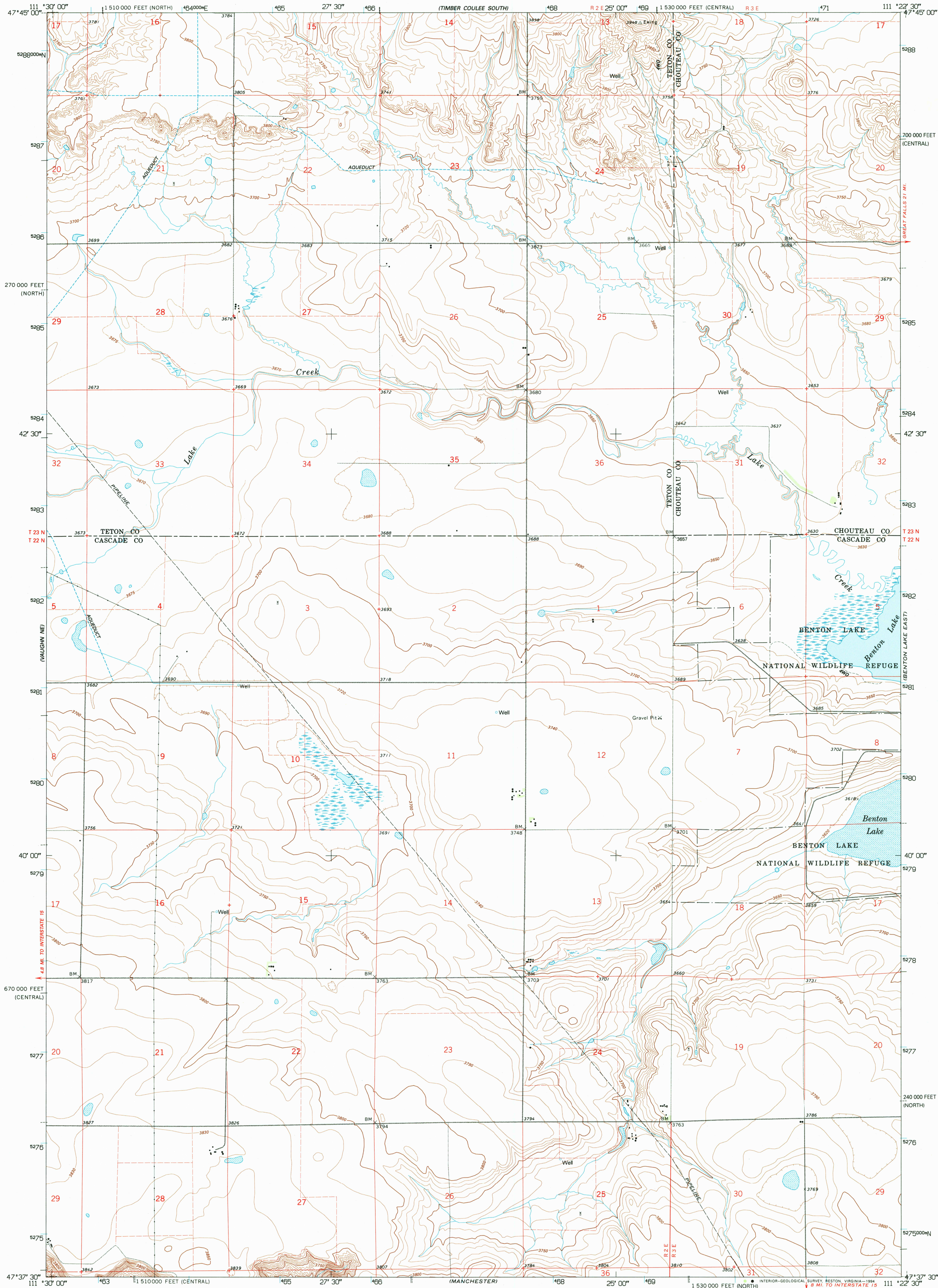


OUTLINE

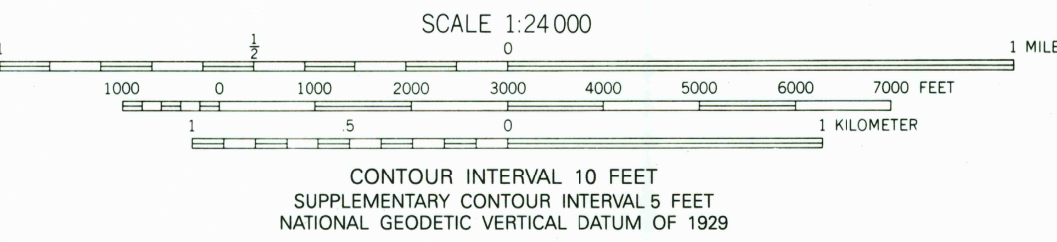
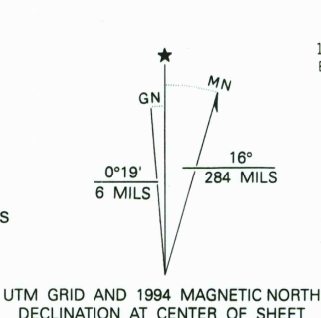
UNITED STATES
DEPARTMENT OF THE INTERIOR
GEOLOGICAL SURVEY

BENTON LAKE WEST QUADRANGLE
MONTANA
7.5 MINUTE SERIES (TOPOGRAPHIC)

(SHEEP COULEE SPRINGS)



Produced by the United States Geological Survey
Control by USGS and NOS/NOAA
Compiled from aerial photographs taken 1964. Field checked 1965
Revised from aerial photographs taken 1990 and other sources
Map edited 1994
North American Datum of 1927 (NAD 27). Projection and
blue 1000-meter Universal Transverse Mercator ticks, zone 12
10 000-foot ticks: Montana Coordinate System central and north zones
North American Datum of 1983 (NAD 83) is shown by dashed
corner ticks. The values of the shift between NAD 27 and NAD 83
for 7.5-minute intersections are obtainable from National Geodetic
Survey NADCON software
There may be private inholdings within the boundaries of the
National or State reservations shown on this map
Fine red dashed lines indicate selected fence and field lines where
generally visible on aerial photographs. This information is unchecked



ROAD CLASSIFICATION
Light-duty _____ Unimproved road _____

BENTON LAKE WEST, MONT.
47111-F4-TF-024

1965
REVISED 1994
DMA 3779 III NW-SERIES V894

