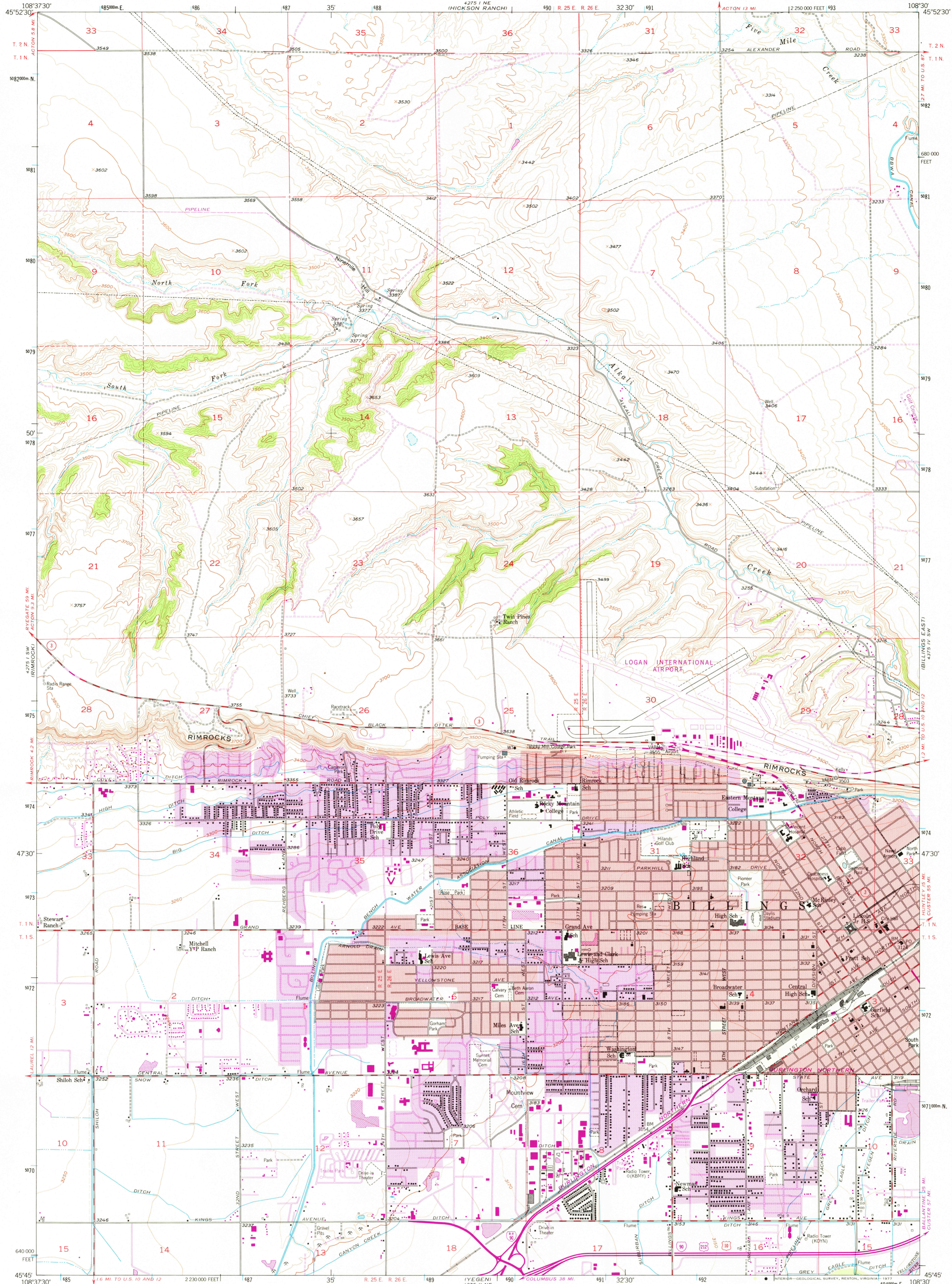


UNITED STATES  
DEPARTMENT OF THE INTERIOR  
GEOLOGICAL SURVEY

BILLINGS WEST QUADRANGLE  
MONTANA-YELLOWSTONE CO.  
7.5 MINUTE SERIES (TOPOGRAPHIC)



Mapped, edited, and published by the Geological Survey as part of the Department of the Interior program for the development of the Missouri River Basin

Control by USGS and NOS/NOAA

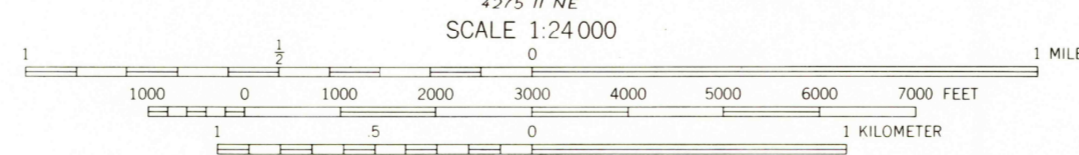
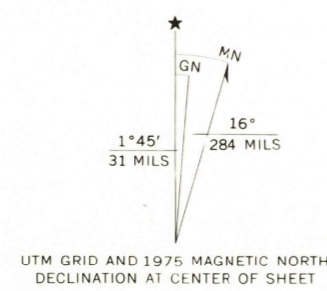
Topography from aerial photographs by multiplex methods and by planetable surveys 1957. Aerial photographs taken 1951

Polyconic projection. 1927 North American datum 10,000-foot grid based on Montana coordinate system, south zone

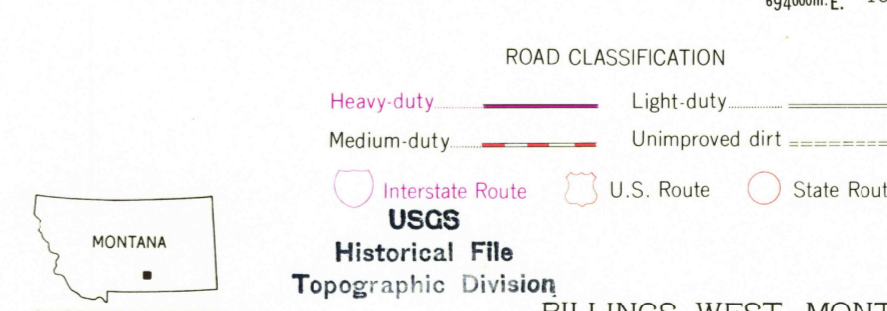
1000-meter Universal Transverse Mercator grid ticks, zone 12, shown in blue

Red tint indicates areas in which only landmark buildings are shown

Dashed land lines indicate approximate locations



CONTOUR INTERVAL 20 FEET  
DOTTED LINES REPRESENT 10-FOOT CONTOURS  
NATIONAL GEODETIC VERTICAL DATUM OF 1929



QUADRANGLE LOCATION

THIS MAP COMPLIES WITH NATIONAL MAP ACCURACY STANDARDS  
FOR SALE BY U. S. GEOLOGICAL SURVEY, DENVER, COLORADO 80225, OR RESTON, VIRGINIA 22092  
A FOLDER DESCRIBING TOPOGRAPHIC MAPS AND SYMBOLS IS AVAILABLE ON REQUEST

Revisions shown in purple compiled from aerial photographs taken 1969 and 1975. This information not field checked  
Purple tint indicates extension of urban areas

BILLINGS WEST, MONT.  
N4545-W10830/7.5

1957  
PHOTOREVISED 1969 AND 1975  
AMS 4275 1 SE-SERIES V894

FEB 17 1978

3100