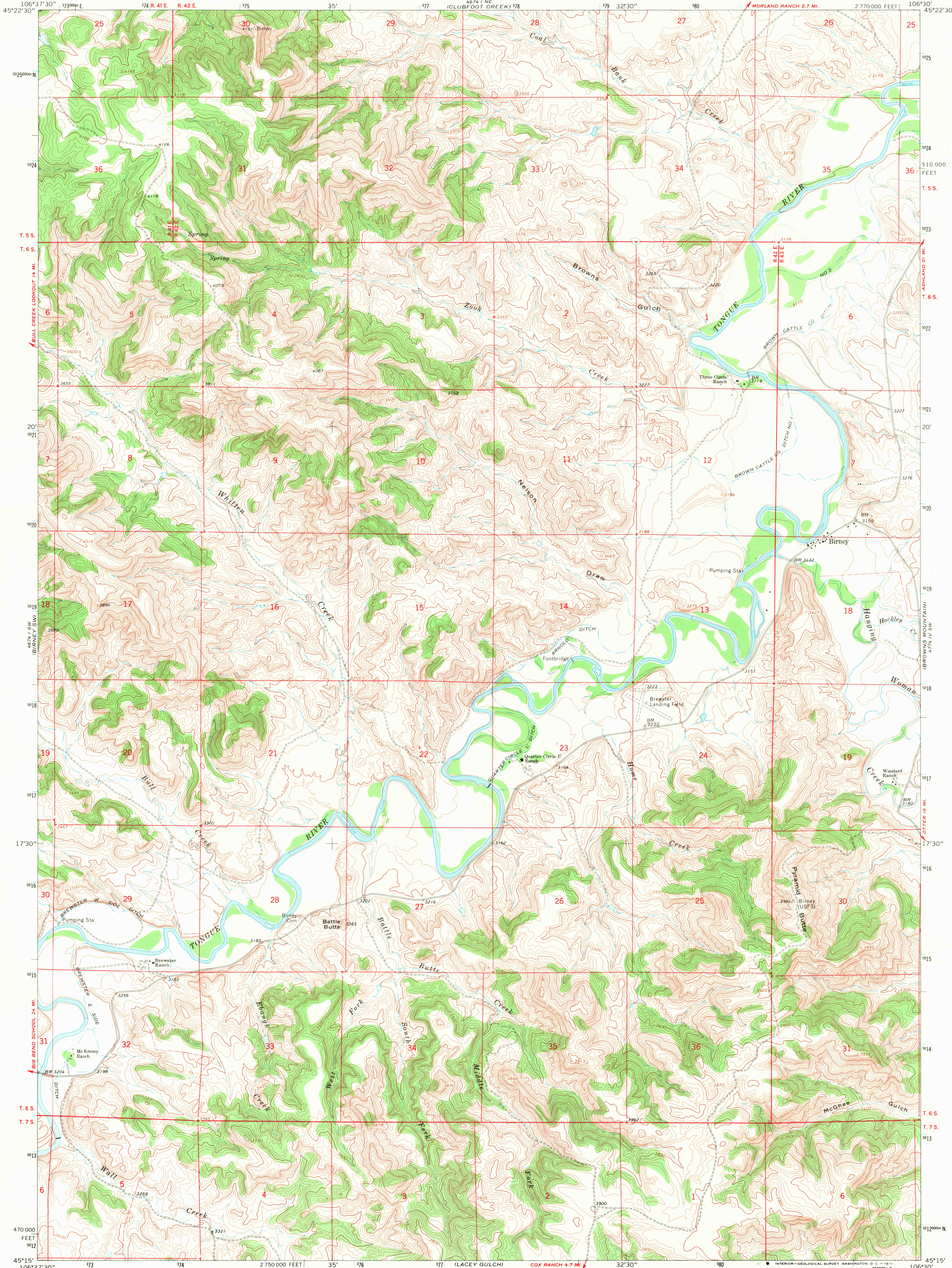


UNITED STATES
DEPARTMENT OF THE INTERIOR
GEOLOGICAL SURVEY

BIRNEY QUADRANGLE
MONTANA—ROSEBUD CO.
7.5 MINUTE SERIES (TOPOGRAPHIC)



Mapped, edited, and published by the Geological Survey

Control by USGS and USC&GS

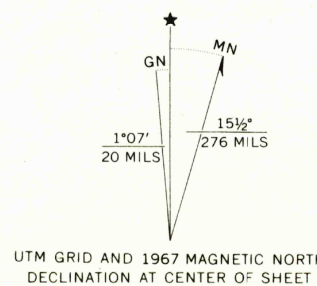
Topography by photogrammetric methods from aerial photographs taken 1966. Field checked 1967

Polyconic projection. 1927 North American datum

10,000-foot grid based on Montana coordinate system, south zone

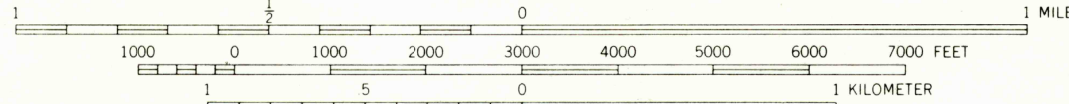
1:000-meter Universal Transverse Mercator grid ticks, zone 13, shown in blue

Fine red dashed lines indicate selected fence lines



UTM GRID AND 1967 MAGNETIC NORTH DECLINATION AT CENTER OF SHEET

SCALE 1:24,000



CONTOUR INTERVAL 20 FEET
DOTTED LINES REPRESENT 10-FOOT CONTOURS
DATUM IS MEAN SEA LEVEL



QUADRANGLE LOCATION

ROAD CLASSIFICATION

Light-duty ——— Unimproved dirt - - - - -

USGS
Historical File
Topographic Division

BIRNEY, MONT.
N4515—W10630/7.5

1967

AMS 4674 1 SE—SERIES V894

U.S.G.S.
F105 COPY
TOPOGRAPHIC DIVISION

1815

MAR 3 1971