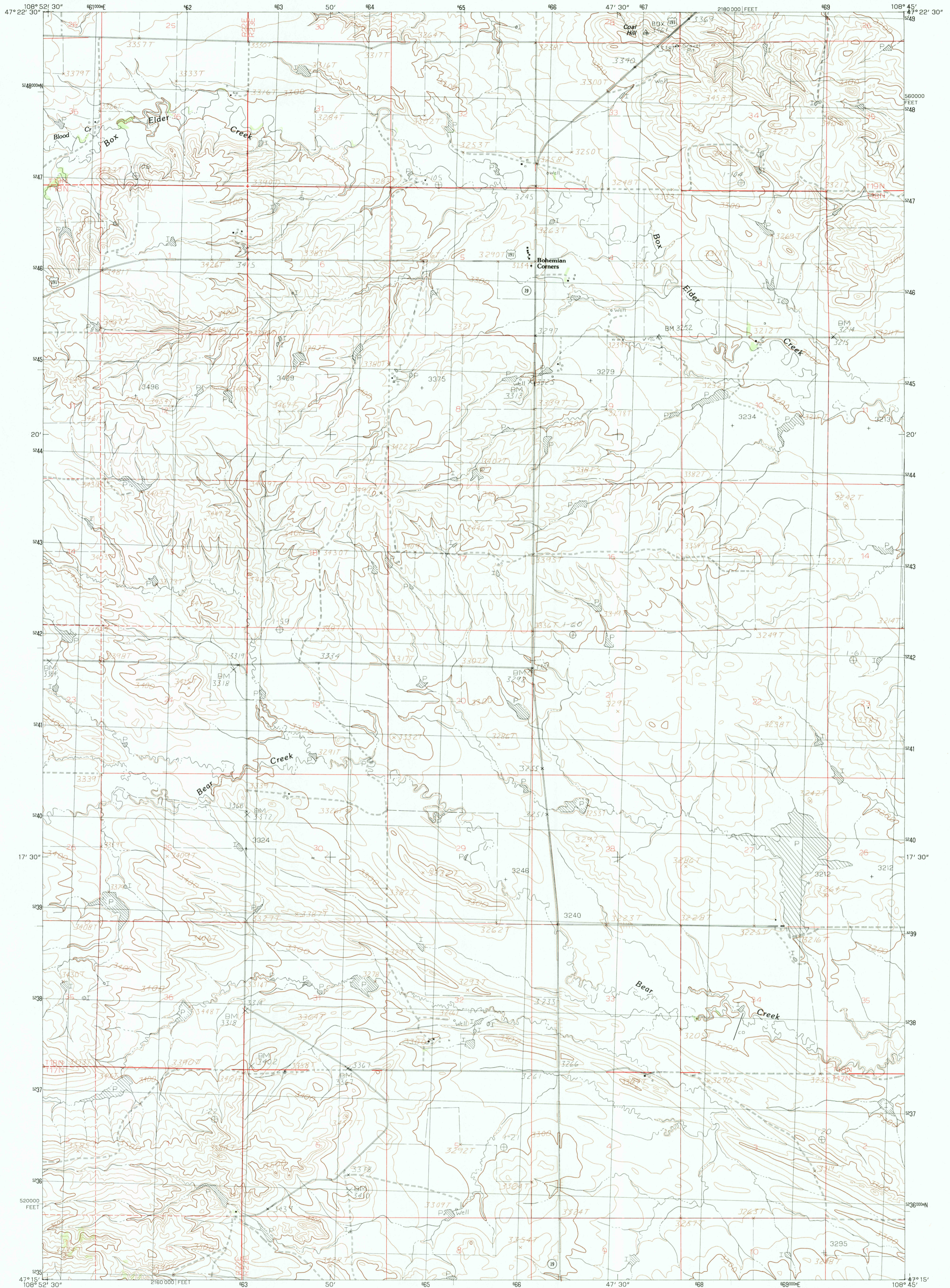


UNITED STATES
DEPARTMENT OF THE INTERIOR
GEOLOGICAL SURVEY

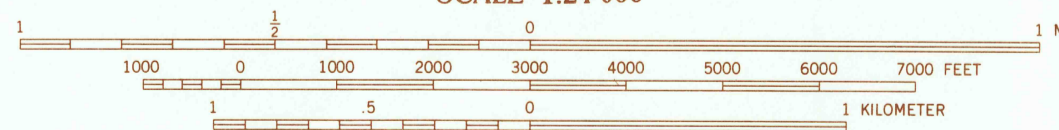
BOHEMIAN CORNERS QUADRANGLE
MONTANA-FERGUS CO.
7.5 MINUTE SERIES (TOPOGRAPHIC)



PRODUCED BY THE UNITED STATES GEOLOGICAL SURVEY
CONTROL BY USGS, NOS/NOAA
COMPILED FROM AERIAL PHOTOGRAPHS TAKEN 1978
FIELD CHECKED 1979 MAP EDITED 1985
PROJECTION LAMBERT CONFORMAL CONIC
GRID: 1000-METER UNIVERSAL TRANSVERSE MERCATOR ZONE 12
10,000-FOOT STATE GRID TICKS MONTANA, CENTRAL ZONE
UTM GRID DECLINATION 1°36' EAST
1985 MAGNETIC NORTH DECLINATION 1°30' EAST
VERTICAL DATUM NATIONAL GEODETIC VERTICAL DATUM OF 1989
HORIZONTAL DATUM 1927 NORTH AMERICAN DATUM
To place on the predicted North American Datum of 1983, move the projection lines as shown by dashed corner ticks (6 meters north and 54 meters east)
There may be private inholdings within the boundaries of any Federal and State Reservations shown on this map

PROVISIONAL MAP
Produced from original manuscript drawings. Information shown as of date of field check.

SCALE 1:24 000



CONTOUR INTERVAL 20 FEET



QUADRANGLE LOCATION

ROAD LEGEND

Improved Road
Unimproved Road
Trail
Interstate Route U.S. Route State Route

1	2	3	1 Roy NW
4	5	4 Roy	2 Griffee Coale
6	7	5 Bear Creek Reservoir	3 Sloan Reservoir
		6 Grass Range NW	
		7 Grass Range NE	
		8 Teigen NW	

BOHEMIAN CORNERS, MONTANA

PROVISIONAL EDITION 1985

ADJOINING 7.5' QUADRANGLE NAMES

47108-C7-TF-024