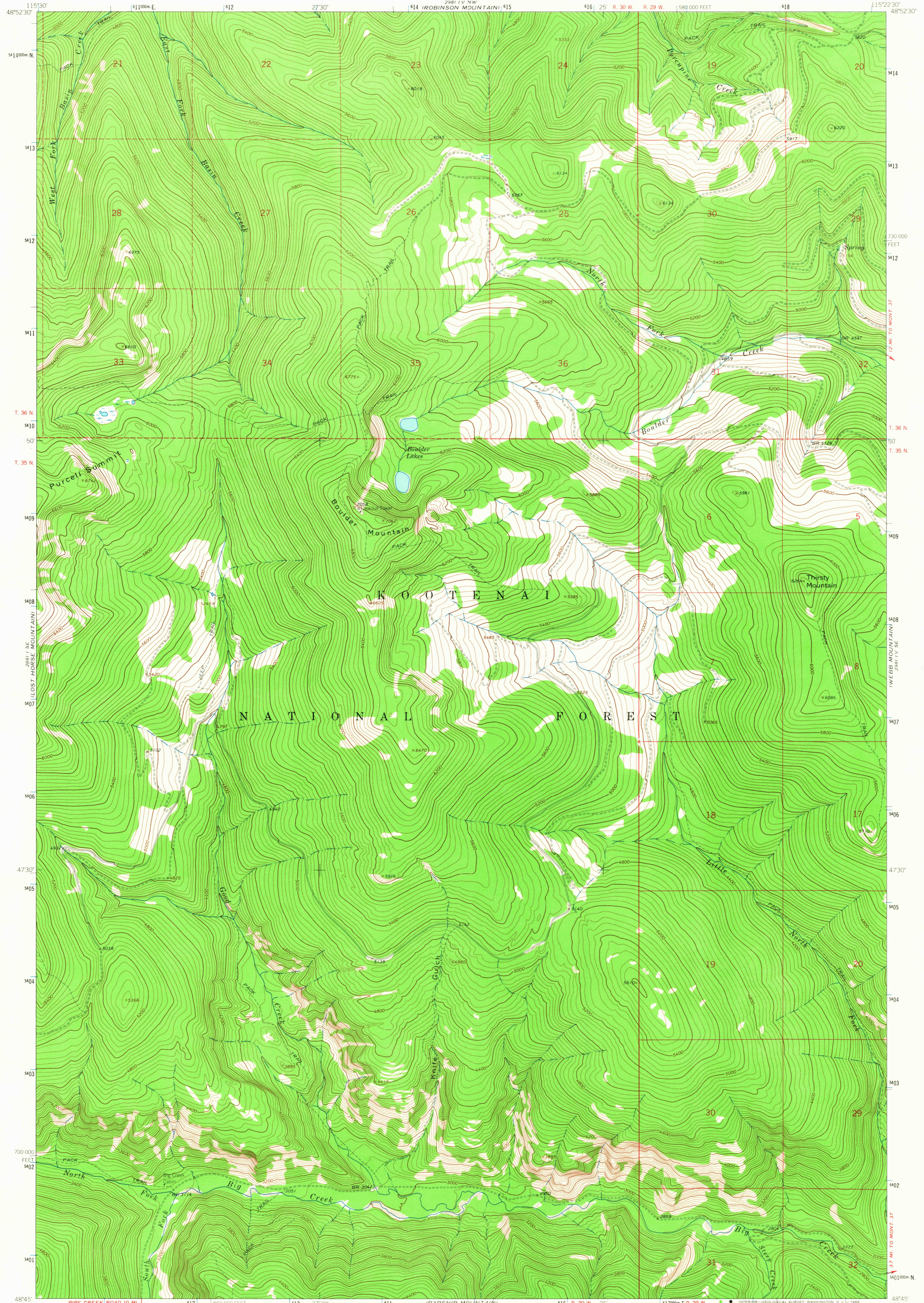


2881 IV SE  
MOUNT HENRY

UNITED STATES  
DEPARTMENT OF THE INTERIOR  
GEOLOGICAL SURVEY

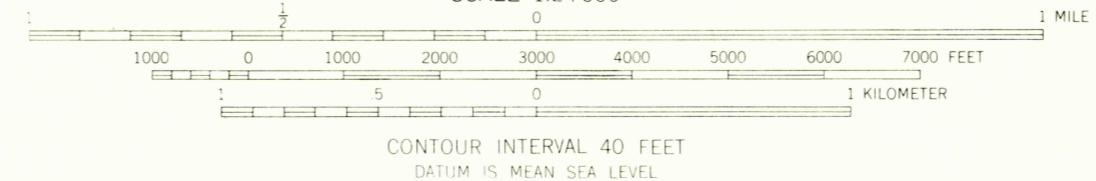
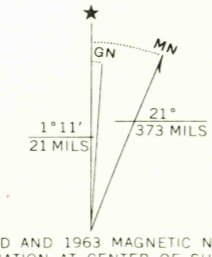
BOULDER LAKES QUADRANGLE  
MONTANA-LINCOLN CO.  
7.5 MINUTE SERIES (TOPOGRAPHIC)

2881 IV NW  
RED MOUNTAIN



2881 IV SE  
MOUNT HENRY

Mapped, edited, and published by the Geological Survey  
Control by USGS and USC&GS  
Topography by photogrammetric methods from aerial photographs taken 1962 and 1963. Field checked 1963.  
Polyconic projection: 1927 North American datum, 10,000-foot grid based on Montana coordinate system, north zone, 1000-meter Universal Transverse Mercator grid ticks, zone 11, shown in blue.  
Where omitted, and lines have not been established.



ROAD CLASSIFICATION  
Light-duty ————— Unimproved dirt - - - - -

BOULDER LAKES, MONT.  
N4845-W11522 5/7.5  
1963

THIS MAP COMPLIES WITH NATIONAL MAP ACCURACY STANDARDS  
FOR SALE BY U.S. GEOLOGICAL SURVEY, DENVER, COLORADO 80225, OR WASHINGTON, D. C. 20242  
A FOLDER DESCRIBING TOPOGRAPHIC MAPS AND SYMBOLS IS AVAILABLE ON REQUEST

AMS 2981 IV SW - SERIES V894

USGS  
Historical File  
Topographic Division

U.S.G.S.  
FILE COPY  
TOPOGRAPHIC DIVISION

2745

2024 1963