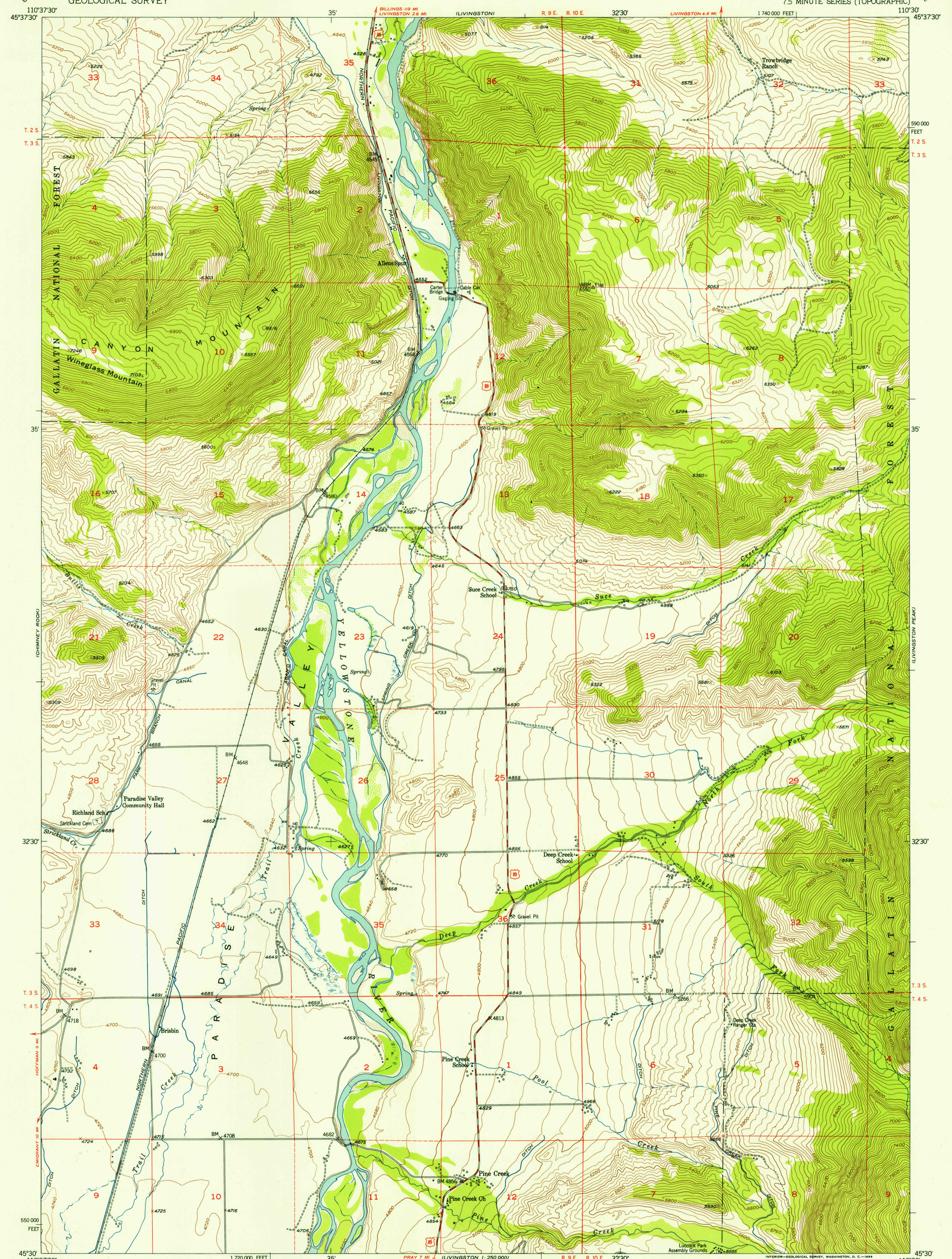
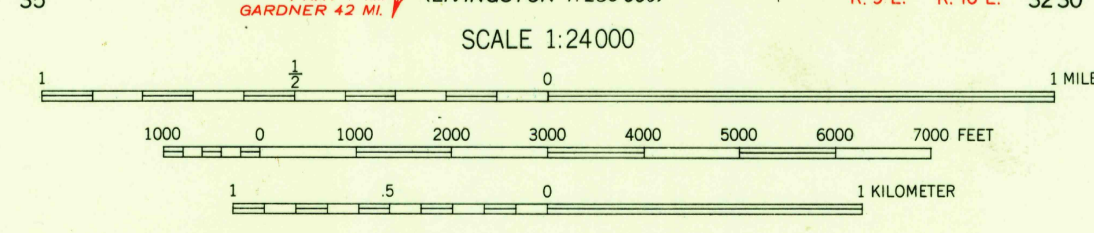
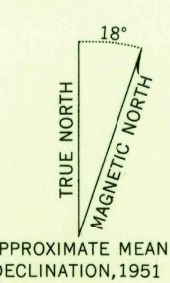


U.S.G.S.
FILE COPY
Inspection and Editing

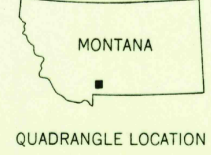


Mapped, edited, and published by the Geological Survey as part of the Department of the Interior program for the development of the Missouri River Basin Control by USGS and USC&GS
Topography from aerial photographs by multiplex methods and by plane-table surveys 1951. Aerial photographs taken 1948
Polyconic projection. 1927 North American datum
10,000-foot grid based on Montana coordinate system south zone
Dashed land lines indicate approximate locations
Land lines unsurveyed in part of T. 3 S. R. 10 E.



CONTOUR INTERVAL 40 FEET
DOTTED LINES REPRESENT HALF-INTERVAL CONTOURS
DATUM IS MEAN SEA LEVEL

ROAD CLASSIFICATION
Heavy-duty **4 LANE 16 LANE** Light-duty **4 LANE 16 LANE**
Medium-duty **4 LANE 16 LANE** Unimproved dirt **4 LANE 16 LANE**
U.S. Route State Route



U.S.G.S.
FILE COPY
Inspection and Editing

BRISBIN, MONT.
N4530-W11030/7.5

THIS MAP COMPLIES WITH NATIONAL MAP ACCURACY STANDARDS
FOR SALE BY U. S. GEOLOGICAL SURVEY, FEDERAL CENTER, DENVER, COLORADO OR WASHINGTON 25, D. C.
A FOLDER DESCRIBING TOPOGRAPHIC MAPS AND SYMBOLS IS AVAILABLE ON REQUEST

1951

USGS
Historical File
Topographic Division

SEP 9 1953
2125