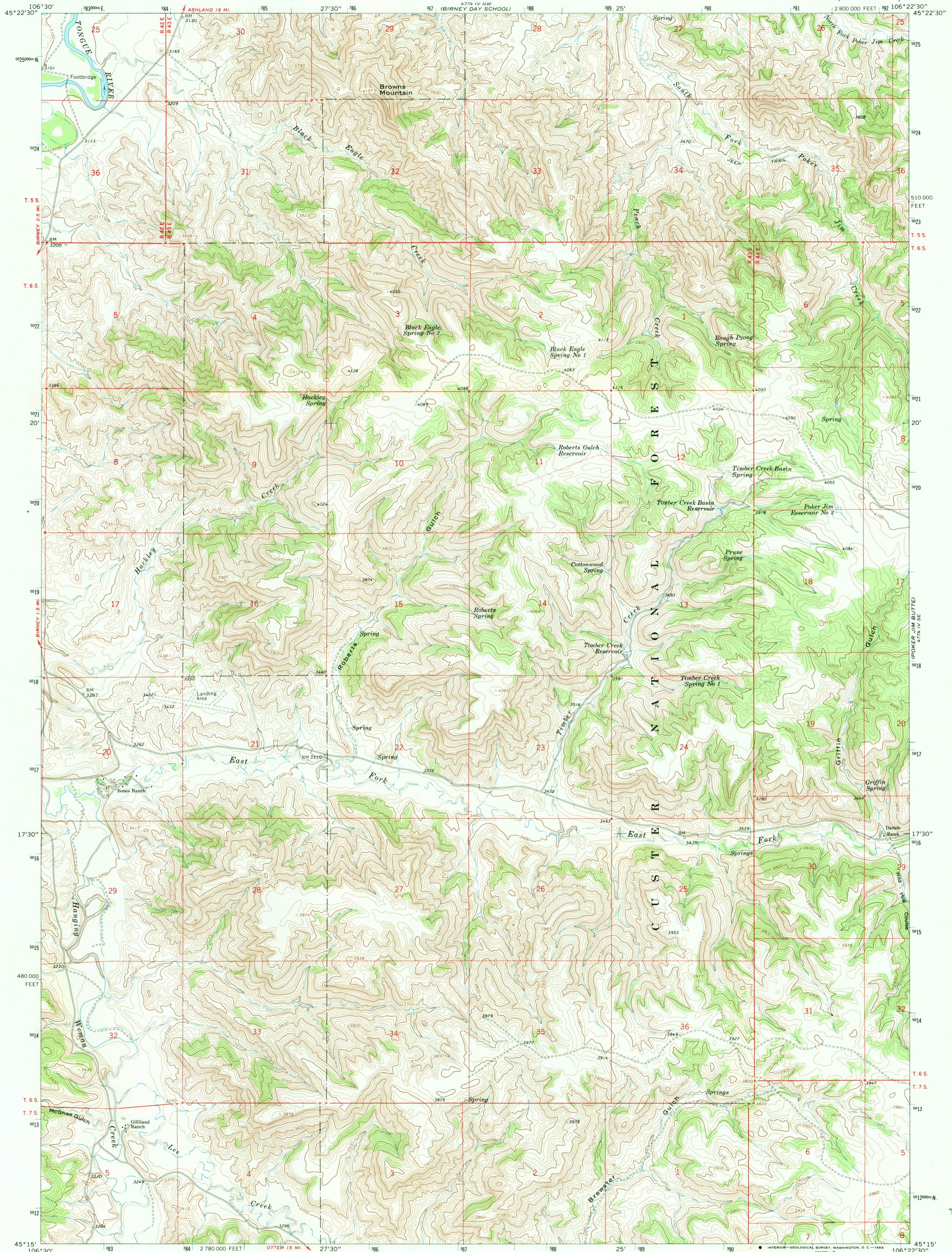
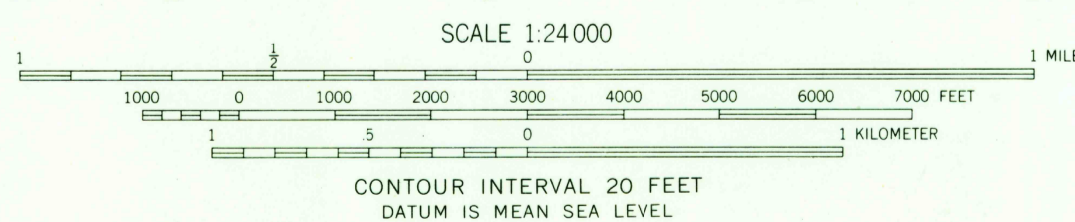
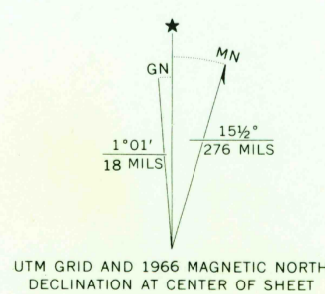


4774 IV NE
GREEN CREEK



Mapped, edited, and published by the Geological Survey
Control by USGS and USC&GS
Topography by photogrammetric methods from aerial
photographs taken 1962. Field checked 1966
Polyconic projection. 1927 North American datum
10,000-foot grid based on Montana coordinate system,
south zone
1000-meter Universal Transverse Mercator grid ticks,
zone 13, shown in blue
Fine red dashed lines indicate selected fence lines



ROAD CLASSIFICATION
Light-duty ——— Unimproved dirt - - - - -

BROWNS MOUNTAIN, MONT.
N4515—W10622.5/7.5

1966

AMS 4774 IV SW—SERIES V894

USGS
Historical File
Topographic Division

U.S.G.S.
FILE COPY
TOPOGRAPHIC DIVISION

2740

NOV 13 1969

THIS MAP COMPLIES WITH NATIONAL MAP ACCURACY STANDARDS
FOR SALE BY U. S. GEOLOGICAL SURVEY, DENVER, COLORADO 80225, OR WASHINGTON, D. C. 20242
A FOLDER DESCRIBING TOPOGRAPHIC MAPS AND SYMBOLS IS AVAILABLE ON REQUEST