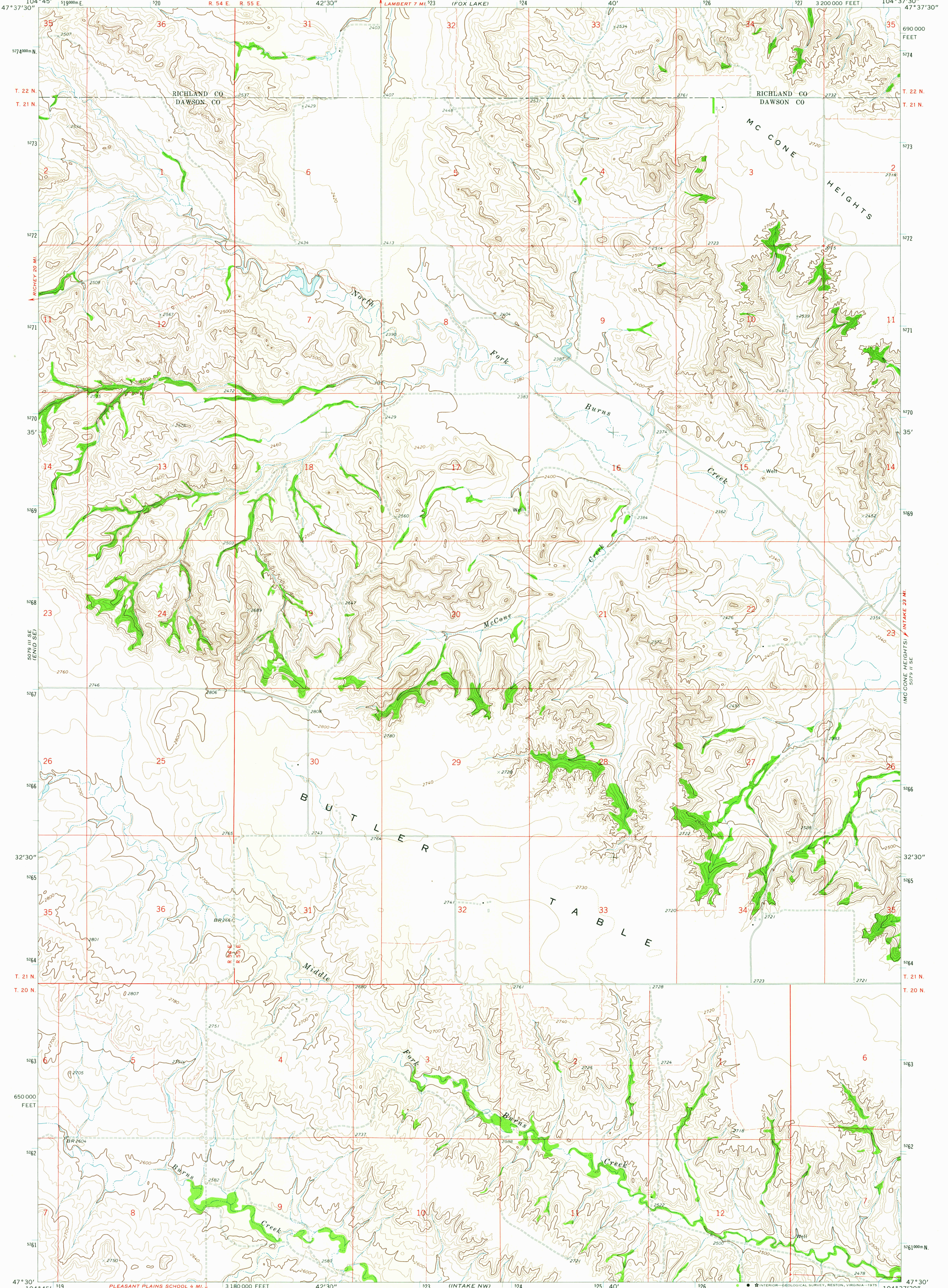


5079 III SE (ENID SE)

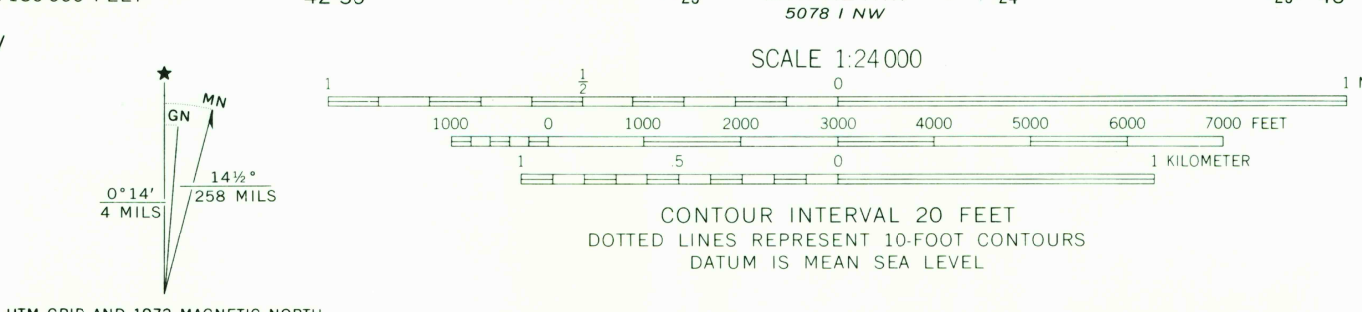
UNITED STATES
DEPARTMENT OF THE INTERIOR
GEOLOGICAL SURVEY

BUTLER TABLE QUADRANGLE
MONTANA
7.5 MINUTE SERIES (TOPOGRAPHIC)

5079 II NE (LAMBERT)



Mapped, edited, and published by the Geological Survey
Control by USGS and USC&GS
Topography by photogrammetric methods from aerial photographs taken 1970. Field checked 1972
Projection and 10,000-foot grid ticks: Montana coordinate system, central zone (Lambert conformal conic) 1000-meter Universal Transverse Mercator grid ticks, zone 13, shown in blue. 1927 North American datum
Fine red dashed lines indicate selected fence lines



ROAD CLASSIFICATION

Primary highway, hard surface	Light-duty road, hard or improved surface
Secondary highway, hard surface	Unimproved road
Interstate Route	U. S. Route
	State Route

CONTOUR INTERVAL 20 FEET
DOTTED LINES REPRESENT 10-FOOT CONTOURS
DATUM IS MEAN SEA LEVEL

USGS HISTORICAL FILE TOPOGRAPHIC DIVISION
BUTLER TABLE, MONT.
N4730-W10437.5/7.5
1972
AMS 5079 II SW—SERIES V394

MAY 21 1975
2300
ALLARD RANCH