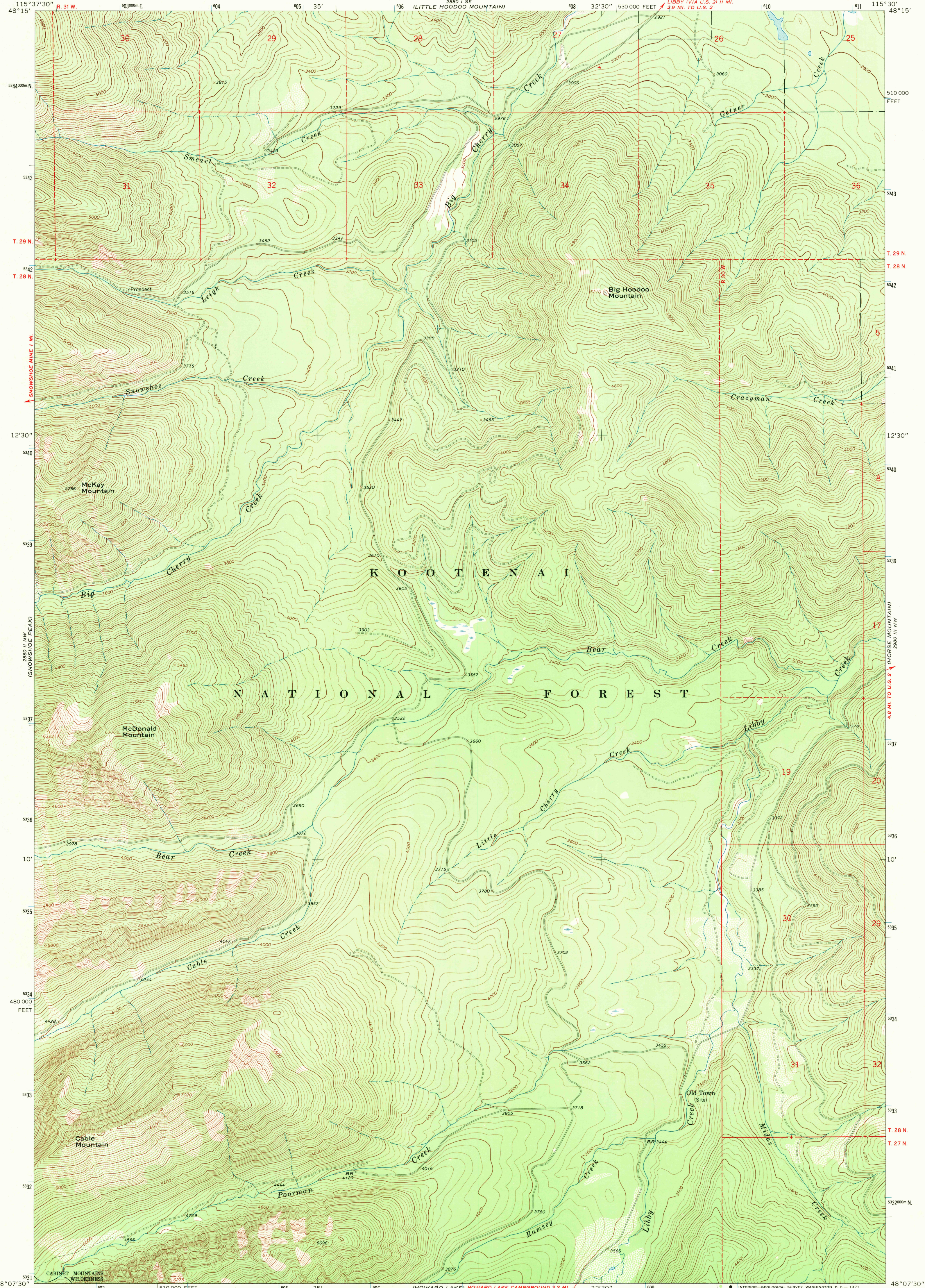


2880 I SW
(TREASURE MTN)

UNITED STATES
DEPARTMENT OF THE INTERIOR
GEOLOGICAL SURVEY

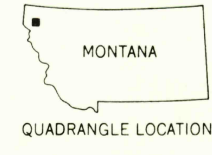
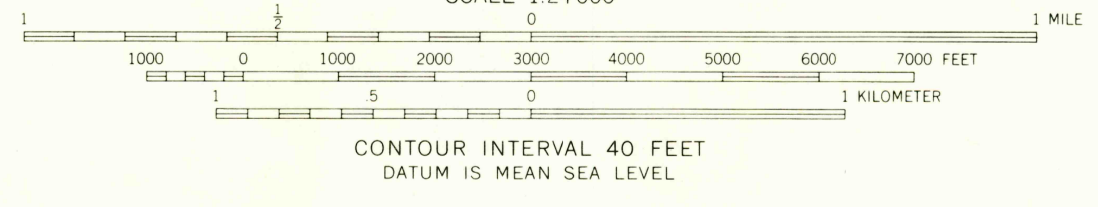
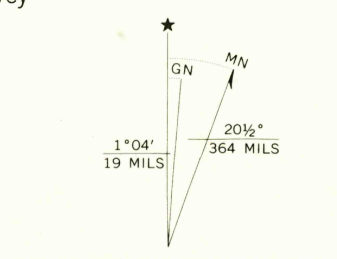
CABLE MOUNTAIN QUADRANGLE
MONTANA—LINCOLN CO.
7.5 MINUTE SERIES (TOPOGRAPHIC)

2880 IV SW
(SWEDE MTN)



2880 I SW
(ELEPHANT PEAK)

Mapped, edited, and published by the Geological Survey
Control by USGS and USC&GS
Topography by photogrammetric methods from aerial
photographs taken 1965. Field checked 1966
Polyconic projection. 1927 North American datum
10,000-foot grid based on Montana coordinate system,
north zone
1000-meter Universal Transverse Mercator grid ticks,
zone 11, shown in blue
Fine red dashed lines indicate selected fence lines
Where omitted, land lines have not been established



ROAD CLASSIFICATION
Light-duty ————— Unimproved dirt - - - - -

CABLE MOUNTAIN, MONT.
N4807.5—W11530.7/5

1966

AMS 2880 II NE—SERIES V894

USGS
Historical File
Topographic Division

U.S.G.S.
FILE COPY
TOPOGRAPHIC DIVISION

2385
MAR 3 1971

THIS MAP COMPLIES WITH NATIONAL MAP ACCURACY STANDARDS
FOR SALE BY U.S. GEOLOGICAL SURVEY, DENVER, COLORADO 80225, OR WASHINGTON, D.C. 20242
A FOLDER DESCRIBING TOPOGRAPHIC MAPS AND SYMBOLS IS AVAILABLE ON REQUEST