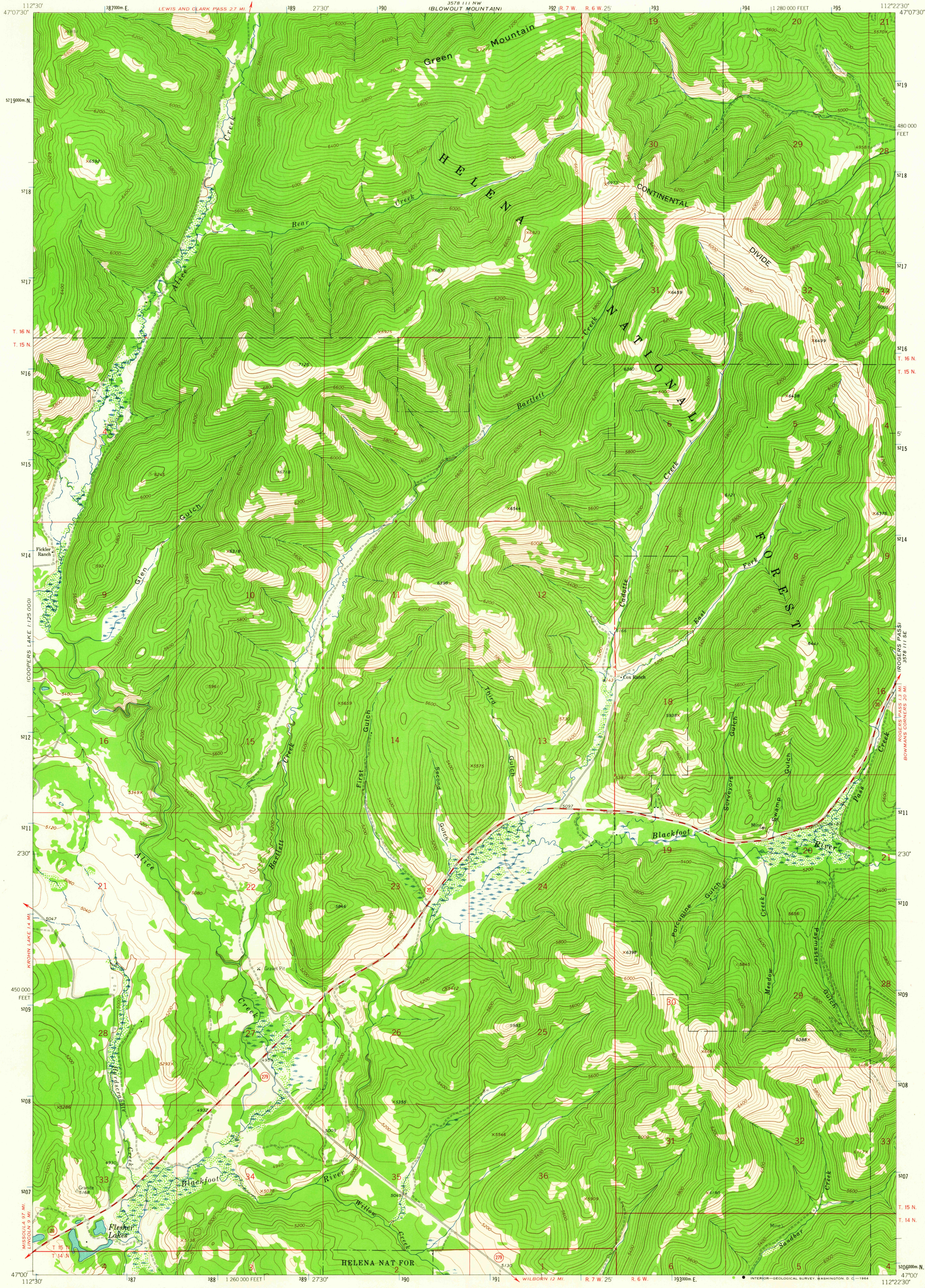


COOPERS LAKE  
1:25,000

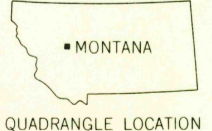
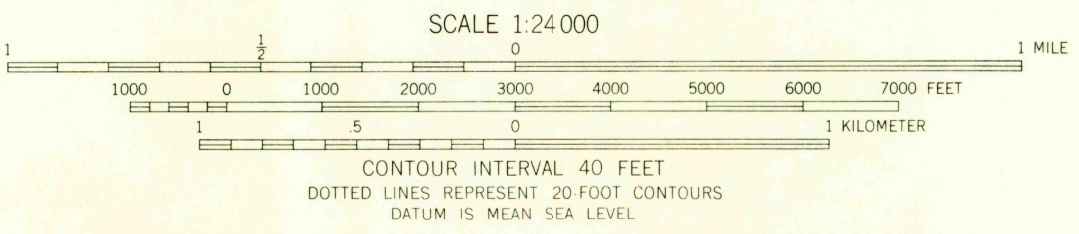
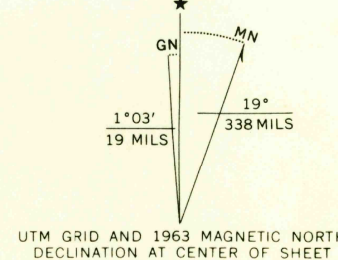
UNITED STATES  
DEPARTMENT OF THE INTERIOR  
GEOLOGICAL SURVEY

CADOTTE CREEK QUADRANGLE  
MONTANA - LEWIS AND CLARK CO.  
7.5 MINUTE SERIES (TOPOGRAPHIC)

3578 111 NE  
JOHNSON MOUNTAIN



Mapped, edited, and published by the Geological Survey  
Control by USGS and USC&GS  
Topography by photogrammetric methods from aerial  
photographs taken 1961. Field checked 1963  
Polyconic projection. 1927 North American datum  
10,000-foot grid based on Montana coordinate system, central zone  
1000-meter Universal Transverse Mercator grid ticks,  
zone 12, shown in blue  
Where omitted, land lines have not been established



ROAD CLASSIFICATION  
Medium-duty ——— Light-duty ———  
Unimproved dirt ———  
○ State Route

CADOTTE CREEK, MONT.  
N4700-W11222.5/7.5

1963

AMS 3578 111 SW - SERIES V894

THIS MAP COMPLIES WITH NATIONAL MAP ACCURACY STANDARDS  
FOR SALE BY U.S. GEOLOGICAL SURVEY, DENVER 25, COLORADO OR WASHINGTON 25, D.C.  
A FOLDER DESCRIBING TOPOGRAPHIC MAPS AND SYMBOLS IS AVAILABLE ON REQUEST

USGS  
Historical File  
Topographic Division

2010  
NOV 23 1964

U.S.G.S.  
FILE COPY  
TOPOGRAPHIC DIVISION