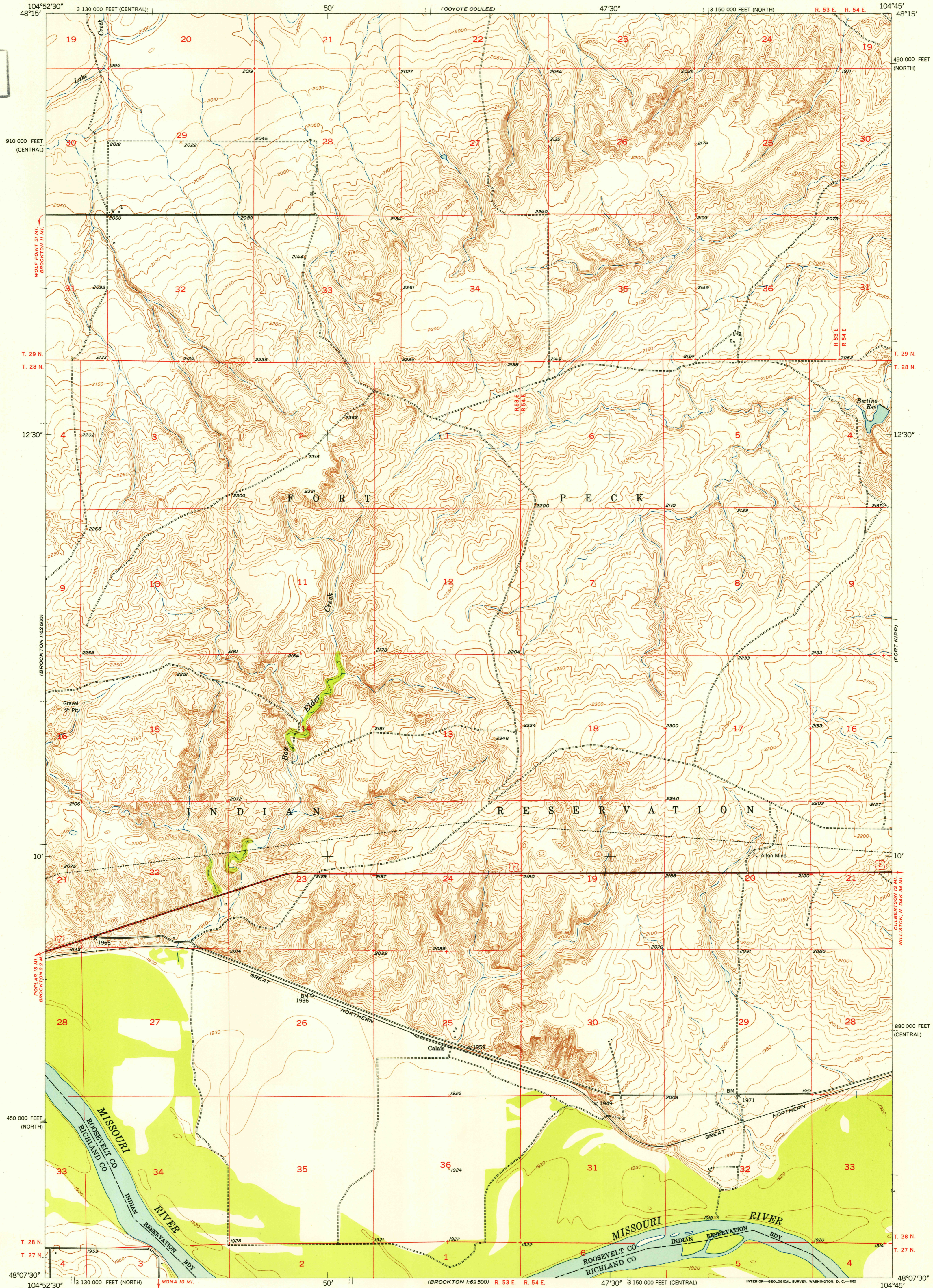


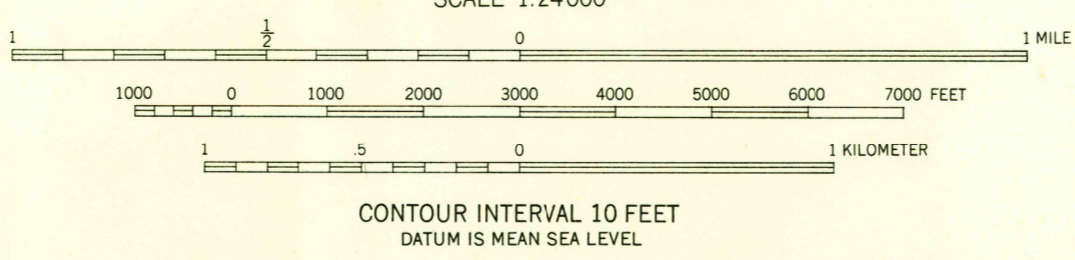
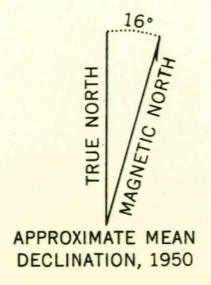
UNITED STATES
DEPARTMENT OF THE INTERIOR
GEOLOGICAL SURVEY

CALAIS QUADRANGLE
MONTANA
7.5 MINUTE SERIES (TOPOGRAPHIC)

U.S.G.S.
FILE COPY
Inspection and Editing.



Mapped, edited, and published by the Geological Survey as part of the Department of the Interior program for the development of the Missouri River Basin
Control by USGS and USC&GS
Culture and drainage in part compiled from aerial photographs taken 1946. Topography by plane-table surveys 1947 and 1950
Polyconic projection. 1927 North American datum
10,000-foot grid based on Montana coordinate system, north and central zones



ROAD CLASSIFICATION

Heavy-duty	4 LANE IS LANE	Light-duty
Medium-duty	4 LANE IS LANE	Unimproved dirt

U.S. Route State Route

U.S.G.S.
FILE COPY
Inspection and Editing.

CALAIS, MONT.
N4807.5-W10445/7.5
1950

THIS MAP COMPLIES WITH NATIONAL MAP ACCURACY STANDARDS
FOR SALE BY U. S. GEOLOGICAL SURVEY, FEDERAL CENTER, DENVER, COLORADO OR WASHINGTON 25, D. C.
A FOLDER DESCRIBING TOPOGRAPHIC MAPS AND SYMBOLS IS AVAILABLE ON REQUEST

USGS
Historical File
Topographic Division

Nov 8 1952 2105